



2nd Strategic Partnership Symposium

Japan Forum for Internationalization of Universities
"Building a Network of 'Strategic Partnerships' to
Strengthen International Competitiveness among
Japanese Universities"

How to deepen the partnership in various aspects

Friday, March 3, 2023 The University of Tokyo

Opening Comments



Prof. HAYASHI Kaori
Executive Vice President, Director
General of the Division for Global Campus Initiatives,
The University of Tokyo

Opening Address



Mr. KOBAYASHI Yosuke,
Director, International Affairs Division, Higher Education Bureau,
Ministry of Education, Culture, Sports, Science and Technology -
Japan

Guest Lecture 1



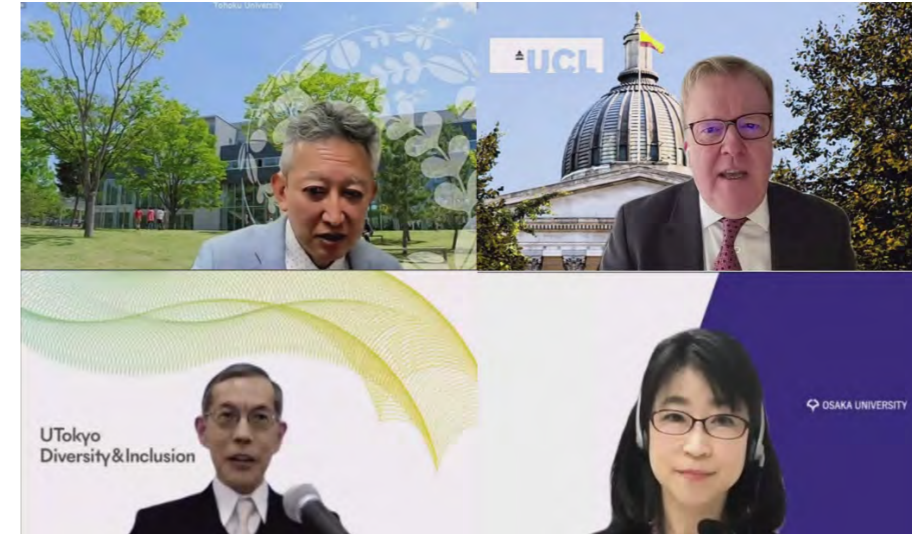
Prof. YONEZAWA Akiyoshi,
Professor, Vice Director, International Strategy Office,
Tohoku University

Guest Lecture 2



Prof. Geraint REES,
Vice-Provost, University College London

Panel discussion



List of Speakers:

1	2
3	4

1. Prof. YONEZAWA Akiyoshi
Professor, Vice Director, International Strategy Office, Tohoku University
2. Prof. Geraint REES
Vice-Provost, University College London
3. Prof. WATANABE Satoshi
Special Advisor to the President,
Deputy Director General of the Division for Global Campus Initiatives, The University of Tokyo
4. Assoc. Prof. OBAYASHI Saori
Center for Global Initiatives, Osaka University

Strategic Partnership Showcase Examples



List of Speakers:

5	6
7	

5. Prof. TSUCHIYA Motohiro
Vice-President for Global Engagement, Keio University

6. Prof. KONOMI Natalie
Vice President, Professor / Manager, Global Strategies Office, Kyushu University

7. Prof. TODA Tatsuki
Dean / Professor, Faculty of Science and Engineering, Soka University

Closing Remarks



Prof. KAWAHARA Genta
Executive Vice President, Osaka University

2nd Strategic Partnership Symposium

How to deepen the partnership in various aspects

Contents	05	Program
	10	Guest Lecture 1 Tohoku University
	21	Guest Lecture 2 University College London
	25	Strategic Partnership Showcase Examples
	26	Keio University
	34	Kyushu University
	41	Soka University

Japan Forum for Internationalization of Universities
 “Building a Network of ‘Strategic Partnerships’ to Strengthen
 International Competitiveness among Japanese Universities” Project

2nd Strategic Partnership Symposium

How to deepen the partnership in
various aspects

Friday, March 3, 2023 17:30-20:00 (JST)

Virtual Meeting

Language: English (Simultaneous translation into Japanese will be available)

The University of Tokyo proposed the “Building a Network of ‘Strategic Partnerships’ to Strengthen International Competitiveness among Japanese Universities” as a project for the Japan Forum for Internationalization of Universities and plan to widely disseminate information by sharing the challenges and good practices with other universities through the enhancement of horizontal cooperation. Through this project, the universities plan to enhance the recognition of Strategic Partnerships and the international presence of the universities of Japan.

This year’s symposium will provide an opportunity to think how to deepen the Strategic Partnerships in various aspects including exchange of people with different functions such as researchers, students or non-academic staff, or synergy between bilateral partnerships and other alliances, consortia and networks of higher education institutes.

Registration

Please register via the following link.

<https://form.qooker.jp/Q/auto/en/0303TokyoSPS/Reg/>



**Pre-registration
required**

Membership University

The University of Tokyo, Tohoku University, Kyoto University, Osaka University, Kyushu University, Ehime University, Waseda University, Keio University, Soka University



Organized by Division of Global Campus Initiatives, UTokyo (intl-project.adm@gs.mail.u-tokyo.ac.jp)



2nd Strategic Partnership Symposium

How to deepen the partnership in various aspects



Program

17:30 Opening Comments



Prof. HAYASHI Kaori, Executive Vice President, Director General of the Division for Global Campus Initiatives, The University of Tokyo

17:34 Opening Address



Mr. KOBAYASHI Yosuke, Director, International Affairs Division, Higher Education Bureau, Ministry of Education, Culture, Sports, Science and Technology - Japan

17:38 Guest Lecture 1



Global Engagement and Strategic Partnerships at Universities

Prof. YONEZAWA Akiyoshi, Professor, Vice Director, International Strategy Office, Tohoku University

18:05 Guest Lecture 2



Prof. Geraint REES, Vice-Provost, University College London

18:35 Panel Discussion



Prof. YONEZAWA Akiyoshi, Professor, Vice Director, International Strategy Office, Tohoku University



Prof. Geraint REES, Vice-Provost, University College London



Prof. WATANABE Satoshi, Special Advisor to the President, Deputy Director General of the Division for Global Campus Initiatives, The University of Tokyo



Assoc. Prof. OBAYASHI Saori, Center for Global Initiatives, Osaka University

19:00 Break

19:05 Strategic Partnership Showcase Examples



Keio University “The Current State of Keio University’s Strategic Partnerships”

Prof. TSUCHIYA Motohiro, Vice-President for Global Engagement, Keio University



Kyushu University “Leveraging our network of partners - Strategic partnerships and Consortia”

Prof. KONOMI Natalie, Vice President, Professor / Manager, Global Strategies Office, Kyushu University



Soka University “Strategic Interdisciplinary Partnerships through SATREPS Projects with Asian and African Countries towards Building a Recycling Oriented Society”

Prof. TODA Tatsuki, Dean / Professor, Faculty of Science and Engineering, Soka University

19:50 Q&A Session

19:55 Closing Remarks



Prof. KAWAHARA Genta, Executive Vice President, Osaka University

大学の国際化促進フォーラム
国際競争力強化に向けた
「戦略的パートナーシップ」のネットワーク構築プロジェクト

戦略的パートナーシップ シンポジウム (第2回)

戦略的パートナーシップによる
多面的な連携深化

2023年3月3日(金) 17:30-20:00

オンライン形式 (Zoomウェビナー)

使用言語: 英語もしくは日本語 (日英の同時通訳あり)

2021年度に「大学の国際化促進フォーラム」事業として採択された国際競争力強化に向けた「戦略的パートナーシップ」のネットワーク構築プロジェクトが開始しました。本プロジェクトは、幹事校の東京大学と8大学が連携協力して、各大学が実施している戦略的パートナーシッププロジェクトの課題やグッド・プラクティス等を共有し横展開をしていくことで、我が国の高等教育の国際通用性・競争力向上を図ります。今年のシンポジウムでは、各大学でこれまで展開されてきた戦略的パートナーシッププロジェクトの事例等を報告するとともに、戦略的パートナーシップによる多面的な連携深化について、研究者・学生・職員など様々なレベルでの交流や、パートナーシップと他の大学ネットワークとの融合までも視野に入れ考える契機とします。

参加登録

下記URLより参加登録手続きをお願いいたします。
<https://form.qooker.jp/Q/auto/en/0303TokyoSPS/Reg/>



要事前登録

プロジェクト参加大学 東京大学、東北大学、京都大学、大阪大学、九州大学、愛媛大学、早稲田大学、慶應義塾大学、創価大学



主催: 東京大学グローバルキャンパス推進本部 (intl-project.adm@gs.mail.u-tokyo.ac.jp)



戦略的パートナーシップシンポジウム (第2回)

戦略的パートナーシップによる多面的な連携深化



Program

17:30 開会挨拶



林 香里 東京大学 理事・副学長、グローバルキャンパス推進本部長

17:34 来賓挨拶



小林 洋介 文部科学省 高等教育局 参事官(国際担当)

17:38 国内ゲスト講演



「大学のグローバル・エンゲージメントと戦略的パートナーシップ」

米澤 彰純 東北大学 教授、国際戦略室副室長

18:05 海外ゲスト講演



Prof. Geraint REES, Vice-Provost, University College London

18:35 パネルディスカッション・質疑応答



米澤 彰純 東北大学 教授、国際戦略室副室長



Prof. Geraint REES, Vice-Provost, University College London



渡邊 聡 東京大学 教授・総長特任補佐、グローバルキャンパス推進本部副本部長



大林 小織 大阪大学 准教授 グローバルイニシアティブ機構

19:00 休憩

19:05 戦略的パートナーシップ 事例紹介



慶應義塾大学「慶應義塾大学の戦略的パートナーシップの現状」

土屋 大洋 慶應義塾 常任理事



九州大学「海外ネットワークの活用 ～戦略的パートナーシップと国際コンソーシアム～」

許斐 ナタリー 九州大学 副理事・教授 国際戦略企画室



創価大学「循環型社会構築を目指したアジア・アフリカ諸国との

SATREPSプロジェクトによる分野横断型戦略的パートナーシップの推進」

戸田 龍樹 創価大学 教授・理工学部長

19:50 質疑応答

19:55 閉会挨拶



河原 源太 大阪大学 理事・副学長

Guest Lectures



Global Engagement and Strategic Partnerships at Universities 大学のグローバル・エンゲージメントと戦略的パートナーシップ



Akiyoshi Yonezawa, Tohoku University

米澤彰純 (東北大学)

akiyoshi.yonezawa.a4@tohoku.ac.jp

1



Outline

- | | |
|---|--|
| 1. Japan's context on the global engagement of universities | 1. 日本の大学のグローバル展開 |
| 2. Japan's context on university strategy | 2. 日本の大学と戦略 |
| 3. The value of international partnership in realizing global engagement | 3. グローバル・エンゲージメントを実現するための国際的なパートナーシップとその意義 |
| 4. What will be the strategic approach to achieve the above-mentioned goals and objectives? | 4. 上記の目標や目的を達成するために、どのような戦略的アプローチを取り得るのか？ |

2

What is global engagement? グローバル・エンゲージメントとは？

Global engagement (Helms & Rumbley in Rumbley et al. 2014)

- Commitment to meaningful relationships with partners in other parts of the world.
- A movement beyond the mechanics of carrying out more traditional campus-based international activities
- Dedication to a deeper and more prolonged commitment to international partnerships for mutual benefit

グローバル・エンゲージメント(Helms & Rumbley in Rumbley et al. 2014)

- 世界の他の場所にいるパートナーとの有意義な関係へのコミットメント
- 従来型のキャンパスベースの国際活動を実施するための仕組みにとどまらない活動
- 相互利益のための国際的なパートナーシップへのより深い、より長期的なコミットメントへの取り組み

Outward engagement as new mode of internationalization

- Spreading institutional research through branch campuses, research centers, and distance delivery
- Competing for global ranking and market share
- Collaborating for joint projects, resource sharing and mutual benefit

新しい国際化としての対外的エンゲージメント

- 海外キャンパス、研究センター、遠隔配信などを通じた国際IRの普及
- 世界ランキングや市場シェアを巡る競争
- 共同プロジェクト、リソース共有、相互利益のための協働



Evolving use of institutional partnerships as agents of internationalization

国際化の担い手としての大学間パートナーシップの活用進展

3

Japan's context on the global engagement of universities 日本の大学にとってのグローバル・エンゲージメントの意義とは？

Global engagement is not a new topic for Japan's HE

- **By 1970s:** Advanced model of modernization in East Asia → WWII → Avoidance of assimilation policy to other countries
- **1980s:** International cooperation in higher education that respects the autonomy of the partners and emphasizes long-term relationships
- **1990s:** Contribution to the world through basic science → recent rush of Nobel Prizes

グローバル・エンゲージメントは日本の大学にとって以前からのテーマ

- **1970s:** 東アジアの近代化先進モデル→太平洋戦争→外国への同化政策への反省
- **1980s:** 相手の主体性を尊重し長期的関係を重視した高等教育国際協力
- **1990s:** 基礎科学を通じた世界への貢献→近年のノーベル賞ラッシュ

4

Pressure of the global and regional economy 世界経済・地域経済の圧力

- World Class University / Academic Excellence Initiatives
 - Active and systemic WCU policies in East Asia
 - University rankings → widening participation pose pressures to matured, non-English speaking systems
- Activated global and regional engagement with multilateral initiatives
- **2000s:** Participating and initiating global and regional networks and consortiums
- **2010s:** Strategic partnerships based on active diplomacy from a global perspective

- ワールドクラスの大学 / 学術的卓越への取り組み
 - 東アジアにおける積極的かつ体系的なWCU政策
 - 大学ランキング競争への参加拡大が成熟した非英語圏のシステムにプレッシャーを与える
 - 多国間のイニシアティブによるグローバル/リージョナル・エンゲージメントのが盛んに
- **2000s:** グローバル・地域のネットワーク・コンソーシアムへの参加と育成
- **2010s:** 地球儀を俯瞰する積極外交に基づく戦略的パートナーシップ

5

Acceptance of International Students 留学生の受入

- Presence in share in students across borders
 - 100,000 by 2000
 - 300,000 by 2020
- Advanced human resource development (STEM)
- Self-financed students attracted by Japan's economy, society and culture
- Japanese language, vocational training
- Incentives: more for human resource development linked with Japan's economy and society rather than income generation through HE service export
- Strengthened link with international (global, & regional) research/industrial collaboration

- 留学生シェアによる国際プレゼンスの追求
 - 10万人留学生受け入れ計画
 - 30万人留学生受け入れ計画
- 高度人材育成(理工系中心)
- 日本の経済・社会・文化に惹かれる自費留学生
- 日本語教育、職業訓練
- インセンティブ: 高等教育サービス輸出による収入獲得よりも、日本の経済・社会と連動した人材育成への貢献に重点
- 国際的(世界的、地域的)な研究・産業連携との連携強化

- What values can Japan's universities share with international students and partners?
- 日本の大学は留学生と国際パートナーと、どのような価値を共有できるのか？

6

Collaborating through international partnerships for higher education capacity development 高等教育開発のための国際的なパートナーシップを通じた協働

King Mongkut's Institute of Technology
Ladkrabang – Tokai University and others



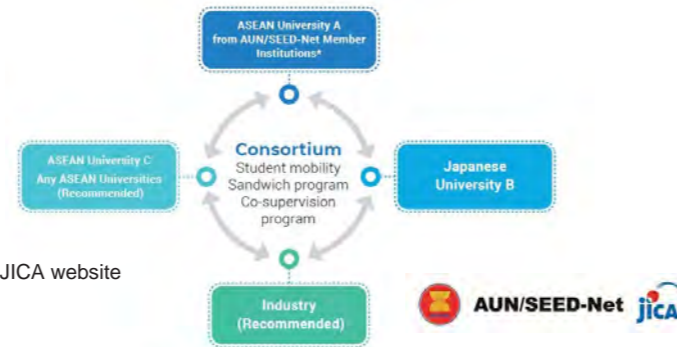
Source: Tokai University website



Jomo Kenyatta University of
Agriculture and Technology



Kayashima et al. (2022)



Source: JICA website

TYPE A
(Top Type)

Universities that have the potential
to be ranked in the top 100 of the
world's universities

13 Universities

TYPE B
(Global Traction Type)

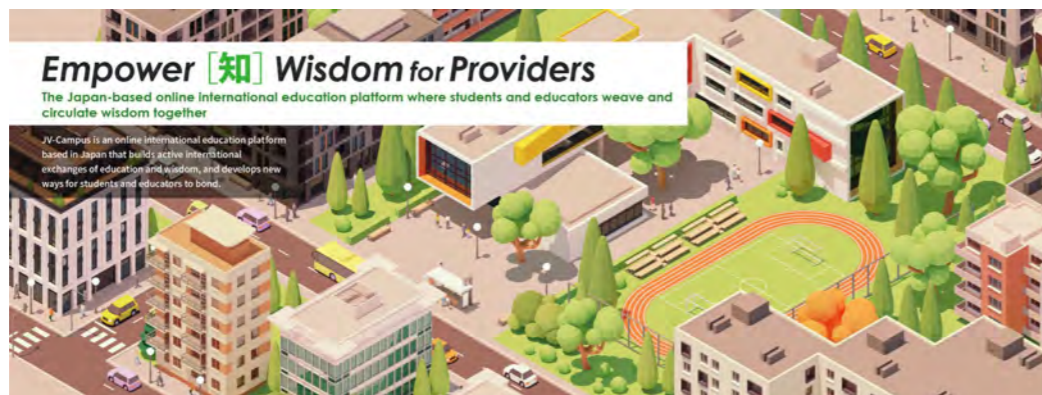
Innovative universities that lead the
internationalization of Japanese
society

24 Universities



775 Universities in Japan

as of April 1, 2016 (Source: Website of MEXT)



International students (world)
(thousands, 2020)
(OECD Education at a Glance 2022)

International students (Japan)
(2020)
(Source: JASSO)

1.	US	957	1.	China	114,255
2.	UK	551	2.	Vietnam	49,469
3.	Australia	458	3.	Nepal	18,825
4.	Germany	369	4.	South Korea	14,247
5.	Canada	323	5.	Indonesia	5,792
6.	France	252	6.	Taiwan	4,887
7.	China	225	7.	Sri Lanka	3,762
8.	Japan	223	8.	Myanmar	3,469
9.	Türkiye	185	9.	Bangladesh	3,095
10.	Netherlands	125	10.	Mongolia	2,619

Sending students abroad, internationalization at home/virtual 学生の海外派遣、キャンパス・仮想学修空間の国際化

- Inward looking attitudes among Japanese students / less threats of brain drain until recently
- 日本人学生の内向き志向 / 近年までの頭脳流出の危機感の少なさ
- 2010s: Global Human Resource movements as agents of Japan's economy
- 2010s: 日本経済の担い手としてのグローバル人材

Drastic changes in global/regional/national contexts under digitalization
in HE and the whole society
デジタル化のもとでのグローバル/地域/国の文脈の激変が、高等教育と社会全体に波及



Redefinition of the values for study abroad and internationalization at home/virtual
学生の海外派遣とキャンパス・仮想学修空間の国際化の価値の再定義

大学の世界展開力強化事業 Inter-university Exchange Project

- | | |
|---|---|
| <p>2011</p> <ul style="list-style-type: none"> Campus Asia: Korea, China (+ASEAN) US (+ Europe, Oceania) <p>2012</p> <ul style="list-style-type: none"> ASEAN SEND program: send Japanese students abroad <p>2013</p> <ul style="list-style-type: none"> AIMS program: SEAMEO RIHED (South East Asia) <p>2014</p> <ul style="list-style-type: none"> Russia India <p>2015</p> <ul style="list-style-type: none"> Central and South America Türkiye | <p>2016</p> <ul style="list-style-type: none"> Campus Asia II: Korea, China ASEAN <p>2017</p> <ul style="list-style-type: none"> Russia India <p>2018</p> <ul style="list-style-type: none"> US (COIL, online usage) <p>2019</p> <ul style="list-style-type: none"> EU <p>2020</p> <ul style="list-style-type: none"> Africa <p>2021</p> <ul style="list-style-type: none"> Campus Asia III <p>2022</p> <ul style="list-style-type: none"> Indo-Pacific: India, Australia, UK <p>2023</p> <ul style="list-style-type: none"> US |
|---|---|

Tohoku University Young Leaders Overseas Visiting Researcher Program 東北大学研究大学強化促進事業「若手リーダー海外派遣プログラム研究員」制度 (2013-2022)

Overseas Visit (traveling in person)

- To support young researchers in building an international network infrastructure through flexible initiatives To support the building of an international network infrastructure through flexible initiatives by young researchers, support is provided for short-term travel, invitations to overseas researchers for a month or so, and the holding of international symposia.
- The goal is to build an international network infrastructure by traveling to benchmark institutions (6 institutions) + overseas partner institutions (33 institutions) to conduct international joint research
- Aim to publish international co-authored papers and build long-term relationships with overseas researchers. After returning to Tohoku University, follow-ups will be conducted to encourage participation in the "Junior Research Program," holding regular symposiums with the institutions of the destination country, etc.

Online Networking (2022-)

- Participate in online meetings of the overseas research group on a regular basis, and conduct or aim to conduct international joint research.

渡航型

- 若手研究者の柔軟な取り組みによる国際ネットワーク基盤の構築をサポートするため、短期渡航や、1ヶ月程度の海外研究者の招聘、国際シンポジウムの開催等を支援。
- ベンチマーク校(6機関) + 海外連携校(33機関)の研究者と国際共同研究を実施することで、国際ネットワーク基盤の構築を目指す。
- 国際共著論文の発表、海外研究者との長期的な関係性の構築を目指す。帰国後は「ジュニアリサーチプログラム」への参加、渡航先機関との定期的なシンポジウム開催等を促すため、フォローアップを実施

オンライン型(2022年度開始)

海外研究グループ(ホスト)内のミーティングに、オンラインにより定期的に参加し、国際共同研究を実施、もしくは実施を目指す。

※2023年度以降は自主財源で継続

Japan's context on university strategy 日本の大学の国際戦略と政策的背景

Developing the capacity to strategize

- Strategic Fund for Establishing International Headquarters in Universities (SiH)
- Global 30 Project
- Top Global University Project

Sharing resources to accelerate internationalization

- Japan Forum for Internationalization of Universities
- Japan Virtual Campus (JV-Campus) Pilot Program

Academic Excellence Initiatives

- Program for Promoting the Enhancement of Research Universities
- Designated National Universities
- Universities for International Research Excellence

Increasing learners with international experiences

- Council for the Creation of Future Education
- Central Council for Education

国際戦略形成能力の開発

- 大学国際戦略本部強化事業(SiH)
- 大学の国際化のためのネットワーク形成推進事業(Global 30)
- スーパーグローバル大学創成支援事業

国際化を促進するためのリソースの共有

- 大学の国際化促進フォーラム
- 日本発のオンライン国際教育プラットフォーム「Japan Virtual Campus (JV-Campus)」パイロット事業

学術的な国際卓越

- 研究大学強化促進事業
- 指定国立大学
- 国際卓越研究大学

国際的な経験を持つ学習者の増加

- 教育未来創造会議
- 中央教育審議会

The value of international partnership in realizing global engagement グローバル・エンゲージメントを実現するための国際的なパートナーシップとその意義

New public management (NPM): Principal-agent model

Global engagement as a part of stakeholder engagement

- Activism:** Disgruntled investors call for changes in organizational management
- Stewardship:** Supporting long-term success that enables the sustainable prosperity of the funder
- Engagement:** purposeful dialogue between investor and company for mutual sustainable prosperity

新公共経営(行政改革): 公共事業としての公教育サービスの請負

ステークホルダー・エンゲージメントの一環としてのグローバル・エンゲージメント

- アクティビズム:** 不満を持つ投資家が組織経営の変革を要請
- ステewardship:** 資金提供者の持続的繁栄を可能とする長期的成功を支援
- エンゲージメント:** 相互の持続的繁栄のための投資家と会社との間での目的ある対話

Transactional to Transformative

Engage directly with diversified internal/external stakeholders more to the global and regional dimensions in addition to national and local dimensions
国や地域だけでなく、グローバルな視点で、学内外の多様なステークホルダーと直接関わる

What will be the strategic approach to achieve the above-mentioned goals and objectives?

上記の目標や目的を達成するために、どのような戦略的アプローチを取り得るのか？

- **With whom?:** specify your stakeholders/partners
 - **Resources?:** knowledge and human resources can be created and developed at your university with various partnership
 - **Sustainability?:** contribute and take initiatives in the formation of **ecosystem** for global knowledge / well-being
- **誰と?:** ステークホルダー/パートナーを特定
 - **リソース?:** 大学は、様々なパートナーシップにより、知識や人材を創造・開発する能力を持つ
 - **持続可能性:** グローバルな知識・ウェルビーイングのためのエコシステムの形成に貢献し、イニシアチブをとる

15

The value of international partnership in realizing global engagement

グローバル・エンゲージメントを実現するための国際的なパートナーシップとその意義

(Sutton, Egginton & Favela, in Deardolf et.al. 2012)

- Making a good institutional match, based on mission, strengths, community connections, and partnership goals
 - Devoting time to building and sustaining the relationship, communicating frequently, dealing with disagreement, and maintaining trust through fairness, integrity, and the honoring of commitments
 - Operating on the basis of shared decision-making, reciprocity, mutual benefit, and collaborative determination of goals and projects
 - Clarifying what is to be provided by each side in a transparent manner that also addresses possible inequalities of resources and imbalances in exchanges
 - Spreading activities across multiple arenas, engaging multiple constituencies, and building a large network of supporters
 - Flexibility, adaptability, and openness to change
 - Engaging relevant decision-makers and supporting the **partnership through an overall institutional partnership strategy**, as discussed in the next section
- ミッション、強み、地域コミュニティとのつながり、パートナーシップの目標に照らし合わせて、組織としての相性を判断する。
 - 関係構築と維持に時間を割き、頻繁にコミュニケーションをとり、意見の相違に対処し、公正さ、誠実さ、約束の遵守を通じて信頼を維持すること。
 - 共有の意思決定、互惠関係、相互利益、目標やプロジェクトの共同決定に基づく運営
 - リソースの不平等や交換の不均衡に対処するため、透明性のある方法で、双方から提供されるものを明確にすること。
 - 活動を多方面に展開し、多方面の人々を巻き込み、多くの支援者のネットワークを構築すること。
 - 柔軟性、適応性、および変化への寛容性
 - 関連する意思決定者を巻き込み、次に述べるような**組織全体のパートナーシップ戦略**を通じて、パートナーシップを支援する。

"One size fits all" doesn't work!
汎用的な解決策は存在しない！

16

Institutional Partnership Strategy 組織全体のパートナーシップ戦略

- Making an inventory of existing affiliations
 - Establishing a partnership approval process articulating overall partnership goals and strategies
 - Spreading a culture of partnership
 - Developing policies procedures and organizational structures for managing Partnerships
 - Providing financial and other support
 - Thoughtful practices for initiating partnerships
 - Well-crafted MOUs and Implementation Plans
 - Thoughtful practices for sustaining partnership
 - Procedures and benchmarks for reviewing, revisiting and terminating partnerships
- 既存の提携の目録を作成する
 - パートナーシップの承認プロセスの確立、パートナーシップの全体的な目標と戦略の明確化
 - パートナーシップの文化を広める
 - パートナーシップを管理するための方針、手順、組織構造の策定
 - 財政的およびその他の支援の提供
 - パートナーシップを開始するための思慮深い実践
 - よく練られたMOUと実施計画
 - パートナーシップを維持するための配慮された実践
 - パートナーシップの見直し、再検討、終了のための手順とベンチマーク

Ethical principles test

- Risk and benefits
- Exploitation
- Standard of education

倫理原則のテスト

- リスクと利益
- 搾取
- 教育水準

Top down and grassroots initiatives
Resource, capacity development, sustainability
トップダウン + ボトムアップ
資源、能力開発、持続性

(Sutton, Egginton & Favela, in Deardolf et.al. 2012) 17



18

Discussion

- Challenge the hegemonic view of globalization
 - Interactive global conversation: International partnerships hold promise for addressing critical global issues that bring different national perspectives and resources together
 - Each university has the rationality to engage in global issues while respecting different cultures and ideas in a highly diverse and interconnected world
 - The international partnership provides an opportunity to create higher education dialogues, internationally constructed and constantly evolving, that go beyond what any one institution could do alone.
 - Use this opportunity to develop the capacity of our members
- グローバリゼーションに対する覇権主義的な考え方に挑戦する
 - 双方向のグローバルな対話: 国際パートナーシップは、異なる国の視点や資源を持ち寄り、重要な地球規模の問題に取り組むための有望な手段
 - 全ての大学は、高度に多様化し相互に繋がった世界において、異なる文化や考え方を尊重しながら、グローバルな問題に取り組む合理性を有する
 - 国際的なパートナーシップは、国際的に構築され、常に進化し続ける高等教育対話の機会を提供し、一つの教育機関が単独でできることを超えていく
 - パートナーシップを通じて大学とその構成員の能力開発を推進

19

Reference

- ACE. *Mapping Internationalization on U.S. Campuses: 2022 Edition*. ACE
- Dearnorff, D.K. et al. (Eds.) (2012). *The SAGE Handbook of International Higher Education*. SAGE.
- Dearnorff, D.K. et al. (2021). *The Handbook of International Higher Education Edition 2*. AIEA.
- Education Insight. *Global Engagement Index* <https://www.educationinsight.uk/gei/index.html>
- Fumasoli, T., & Huisman, J. (2013). Strategic agency and system diversity: Conceptualizing institutional positioning in higher education. *Minerva*, 51, 155-169.
- Kayashima, N. et al. (Eds.) (2022). *Japan's International Cooperation in Education*. Springer.
- Knight, J. (2022). *Knowledge Diplomacy in International Relations and Higher Education*. Springer.
- Lee, J.J., Vance, H., Stensaker, B. & Ghosh, S. (2020) Global rankings at a local cost? The strategic pursuit of status and the third mission, *Comparative Education*, 56:2, 236-256, DOI: 10.1080/03050068.2020.1741195
- Rumbley, et al. (Eds.) (2014). *Global Opportunities and Challenges for Higher Education Leaders: Briefs on Key Themes*. Sense.
- Selingo, J.J. (2013). *College (Un)bound: The Future of Higher Education and What It Means for Students*. Amazon Publishing. 船守美穂訳(2018)『カレッジ・(アン)バウンド』東信堂
- Yonezawa, A., Hammond, C.D., Brotherhood, T., Kitamura, M. & Kitagawa, F. (2020) Evolutions in knowledge production policy and practice in Japan: a case study of an interdisciplinary research institute for disaster science, *Journal of Higher Education Policy and Management*, 42:2, 230-244, DOI: 10.1080/1360080X.2019.1701850
- Yonezawa, A. (2023), Japan's Higher Education Policies under Global Challenges. *Asian Economic Policy Review*. <https://doi.org/10.1111/aep.12421>

21

We need to think seriously about how we can attract and nurture internal and external community members, and develop international partnerships for global well-beings

学内外のコミュニティメンバーをどのように集め、育成していくか、また、グローバル・ウェルビーイングのために国際的なパートナーシップをどのように展開していくのか、真剣に考えなければならない



Joint Seminar on the 2023 Earthquake in the Southern Türkiye and Syria
 Mechanism, damage and strategy for recovery, reconstruction, BBB, and Resilient society

PROGRAM

- **Opening remarks**
 Prof. Fumihiko Imamura, IRiDeS Director
 10:00~12:00 (UK)
 13:00~15:00 (Türkiye)
 19:00~21:00 (Japan)
- **Mechanism and background of the earthquakes**
 Prof. Shinji Toda, IRiDeS, Tohoku University
 Registration: <https://forms.gle/s3ksLMuAKL3ZiAYw9>
- **Characteristics of the earthquake ground motion and damage to buildings**
 Assoc. Prof. Susumu Ohno and Assoc. Prof. Ryuta Enokida.
 Prof. Kohju Ikago, IRiDeS, Tohoku University
 Dr. Yasemin Aktas, UCL (Recorded video)
 Prof. Aysegül Askan, METU
- **Preliminary building damage assessment using remote sensing data**
 Prof. Shunichi Koshimura, IRiDeS, Tohoku University
- **Lifesaving and health issues in the disaster areas**
 Prof. Shinichi Egawa and Assoc. Prof. Hiroyuki Sasaki, IRiDeS, Tohoku University
 Assist. Prof. Stephen Roberts, UCL-IRDR
- **Gender and other issues related to social vulnerabilities**
 Dr. Miwako Kitamura, IRiDeS, Tohoku University
 Ms. Deniz Demirag, University of London, SOAS
- **On the disaster mitigation system in Turkey and possibilities of future support**
 Visiting Prof. Kimio Takeya (Special Advisor for Disaster Management, JICA)
 Prof. David E. Alexander, UCL-IRDR
 Prof. Ahmet C. Yalciner, METU
- **Closing remarks**
 Prof. Shinichi Kuriyama, IRiDeS's Head of Disaster Medical Science Division
 Prof. Haruo Hayashi, Chair of JHoP (Recorded video)

More info: <https://irides.tohoku.ac.jp/eng/event/detail?id=6260.html>

Organized by IRiDeS-Tohoku University, UCL Institute for Risk and Disaster Reduction (IRDR), Middle East Technological University (METU), and Istanbul Technical University



UCL and JAPAN: From Tsunagari to Shared Challenges

Japan Forum for
Internationalization of Universities

Professor Geraint Rees
Vice-Provost (Research, Innovation and Global Engagement)
UCL

UK and Japan - national and international overviews

• Post-Brexit – challenges and focuses

- UK government – the 1st post-Brexit trade deal signed was with Japan (2020)
- UK foreign policy on “Indo-Pacific tilt” (2021)
- New Ministry of Science, Innovation & Technology & announcement of International Science Partnership Fund (2022-3)

• Japan’s excellent capacity

- Total expenditure (in 2020) on R&D £128 billion; 3.59 GDP, 72% (£92 billion) from the private sector
- 951,000 researchers; 5th in 2021 *Nature* Index (UK is the 4th!); 13th in Global Innovation Index.

• Research landscape of UK-Japan collaboration

- In all fields, UK-Japan research quality 3.5 times > the world average; in medicine, 6.5 times > the world average
- UK is Japan’s 4th biggest research collaborator
- Japan is UK’s 14th biggest research collaborator
 - **With the size and excellence of research in Japan, it’s a missed opportunity!**

UCL and Japan - 繋がり *Tsunagari*

• Historical connections

Which endure through time and accrue over time, and from which derive wonderful, often unexpected, legacies that can take time to emerge.

- Choshu Five
- Joji Sakurai: the first Professor of Chemistry at University of Tokyo; first non-British honorary fellow of UCL in 1937. (The [recording](#) of his speech).
- Eric Satow (**Satō Ainosuke** 佐藤 愛之助) from a UCL student to Japan, to a British diplomat in Japan.

• Organic connections

- 56% increase of collaborative publications 2013-2022
- 270 students from Japan (2022/23) vs. 5 in 1870.

• Strategic partnerships

- Academic partners:
 - ❖ Tokohu University: disaster science, data science, neuroscience, materials science, EDI, and higher education
 - ❖ Osaka University: global health and wellbeing, neuroscience, urban sustainable design, and society and education)
- Industry partners:
 - ❖ HORIBA: advanced propulsion
 - ❖ Eisai: neurodegeneration
 - ❖ Santen: ophthalmological diseases

Advantages and challenges - institutional level

Advantages

- Career security and progression under a clear academic career framework
- 50% of students are international. Global experience embedded curricula
- London’s global university – location, research environment
- Shared visions: UCL’s six ‘Grand Challenges’ (UCL 2034) and commitment to SDGs
- Similar and comparable structures, funding paradigm, and outlook

UCL’s 繋がり

- Attracting international talents to study and work at UCL, which naturally create connections with talents abroad
- Tohoku and Osaka:
 - Joint seed funding schemes and doctoral training initiatives
 - Start-up style financial resources for international collaboration
 - Signalling the positivity and importance of international partnerships
 - 1+1 > 2: access to cross-institutional resources; expose to diverse research culture

Challenges

- Community – ensuring we attract and keep the right staff and students, people fundamentally disposed toward international co-operation
- Culture – ensuring that the internationally focused disposition of our people is reflected in our strategies and celebrated by our institutions
- Capabilities – making sure that our systems and processes both align with the global aspects our strategy and incentivise individuals to pursue global collaboration

Opportunities

- Resources and support for language study option at UCL to initiate and nurture cultural competency. Global mobility opportunity in collaboration with partners
- Exploring joint offering in diversifying the curricula and expanding PhD global experiences, such as joint PhDs
- Exploring opportunities for staff mobility and capacity building

Advantages and challenges - national level



Advantages

- UK's strongly incentivised international student number growth and an international outlook – the 'silver lining' resulting from insufficient government funding
- Both governments' new funding schemes

UCL's 繋がり

- As active member of international alliances and fora, such as U7+ and STS (Science and Technology in Society) Forum, working with our global partners in providing policy recommendation for HE development, science and innovation to address global challenges
- UCL's direct conversations and engagement with the Whitehall and Westminster, by leveraging our influences through expertise and UCL's annual economic impact (comparable to London 2012 Olympics)
- UCL has been selected to lead a new nationwide Language Hubs programmes (March 2023).

Challenges

- Immigration schemes in support of global talent acquisition
 - How to create the conditions to attract and retain people
 - How to align with research funding schemes and programmes
- State funding and tuition policy
 - How to alleviate stress on international tuition fee income
 - How to offset full-cost international tuition fees when implementing opportunities of global experiences for inbound and outbound students
- The university ranking dilemma

Opportunities

- Bi-lateral/cross-governmental funding and mechanism to establish reciprocal talent flows, esp. for 6-12 month exchanges
- Supporting partner institutions' applications to national funding (e.g. Japan's Universities Endowment Fund and UK's ISPF)
- Supporting and enabling joint research and education grant application to national and international funding agencies.
- The Haldane Principle – academic freedom and wisdom in piloting scientific pursuit

Thank you for your attention.

End of presentation.

Advantages and challenges - international level



Advantages

- Shared focus and endeavour on research integrity and security
 - Similar contexts of government expectations, regulatory intervention, and media scrutiny
 - Trusted and like-minded partners
- An international composition of the student body: 50:50 UK:International

UCL's 繋がり

- Covid responses
 - Professor Tatiana Fumasoli (Director of Centre for Higher Education Studies, UCL) and Professor Akiyoshi Yonezawa (Tohoku U.) on [Exploring how university leaders across the world responded to the Covid-19 crisis](#) (June 2022).
 - [UCL and Tohoku University joint consortium on long COVID](#) (July 2021)
- Global health and societal changes
 - [UCL-Osaka U. on the mathematics for risk and decisions](#) (March 2022)
 - [UCL-Osaka U. committed to addressing societal changes](#) (April 2021)

Challenges

- Neighbouring research powerhouses (competitors & collaborators) – EU and China
- Difficult political backdrop and geopolitical risk factors
- Under the international competitiveness –
 - How to convince our governments to have both a continental and a global focus
 - How to convince a short-term entity (a government) of the need to pursue long-term benefit

Opportunities

- The creation of Department for Science Innovation and Technology in the UK – where HEI leaders will lobby
- UK-Japan join force as global thought leaders, along with our common partners in the US, Australia, and Europe, to support academic mission of each nation
 - G7 and U7+; STS forum; Expo 2025
- Mobilising a global community in the framework of partnership to enhance global crisis management and support

Strategic Partnership Showcase Examples

The Current State of Keio University's Strategic Partnerships

Keio University
Tokyo, Japan

TOP GLOBAL UNIVERSITY PROJECT Keio Global Initiatives Longevity Security Creativity

Professor Motohiro Tsuchiya
Vice-President for Global Engagement
Keio University
3 March, 2023



Reflecting on Presentation (May 24, 2022): "Building Strategic Partnerships: Another Approach"



Keio University
Tokyo, Japan

TOP GLOBAL UNIVERSITY PROJECT Keio Global Initiatives
Longevity Security Creativity



Today's Presentation: "The Current State of Keio University's Strategic Partnerships"

Today's presentation will look at Keio's recent (around AY2022) global engagement activities through the lens of strategic partnership.

First, we will cover examples of consortium-level activities such as the U7+ Alliance of World Universities touched upon in the previous presentation on May 24.

Next, we will go over activities conducted with partner institutions and foreign embassies.

Finally, we summarize the advantages and characteristics of Keio University's strategic partnerships, as well as challenges and future prospects.

Consortium Case 1: Hosting "U7+Alliance Presidential Summit"

What is the U7+ Alliance of World Universities?



The U7+ Alliance of World Universities is a consortium of research universities launched by Sciences Po during the 2019 G7 Summit. It consists of 52 universities in 19 countries around the world that share the same values.

The U7+ Alliance discusses **global issues** and **makes proposals to the G7** and other world leaderships.

The Fifth Annual U7+Alliance Presidential Summit

The Pen is Mightier than the Sword: Universities as Engines of Innovation for Peace and Security

on March 16-17, 2023, at Keio University, Tokyo



Table of Contents

1. Consortium partnerships: Collaborating with groups of universities that share values
 - Case 1: U7+ Alliance Presidential Summit on March 16, 17
 - Case 2: Research University 11 (RU11) activities
 - Case 3: Association of Pacific Rim Universities (APRU) activities
2. Long-term partnerships with partner universities: Collaborating with universities with similar characteristics
 - Case 4: Japan-Korea Millennium Forum
3. Partnerships with foreign embassies and related organizations: Collaborating with foreign governments to form science and technology and higher education policies
 - Case 5: Embassy of the Republic of Indonesia, Australian Embassy
 - Case 6: Experience Japan Exhibition (EJE) held with the British Council
4. Summary: Challenges and prospects

Consortium Case 2: Representing RU11 Japan

What is the RU11 (Research University 11)?

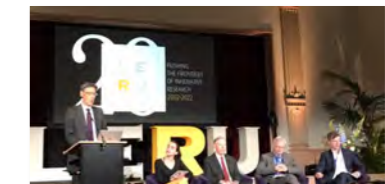
The RU11 is a consortium of 11 research universities in Japan that was formed in 2009.

Keio University is **in charge of international affairs** at RU11.

Keio University represents the RU11 in regular meetings of the Global Council for Research Intensive Universities Network with LERU (Europe), AAU (USA), Canada U15, German U15, Go8 (Australia), and the Russel Group (UK).

On behalf of the RU11, Keio signed the Leiden Principles in May 2022.

Leiden Principles : Values for research universities
<https://www.leru.org/publications/the-leiden-principles>



Above: A panel discussion among Canada U15, Russell Group, German U15, and RU11 at the LERU Rector's Assembly

Below: The signing of the Leiden Principles



Consortium Case 3: Commitments as an APRU Member University

What is the Association of Pacific Rim Universities (APRU)?

The APRU is a consortium of 60 research universities in 18 countries and regions of the Pacific Rim that was formed in 1997.

Key Commitments in AY2022

Annual President Meeting (July 6-9, 2022)
Senior International Leaders' Meeting (October 17-19, 2022)
APRU Virtual Student Exchange
Asia Pacific Women in Leadership (APWiL)



APWiL Event 'Exploring Intersectionality on International Women's Day'
Co-host with The University of Melbourne (March 8, 2023)

<https://apru.org/event/exploring-intersectionality-on-international-womens-day/>



Partner Universities Case 4: Japan-Korea Millennium Forum

What is the Japan-Korea Millennium Forum?

The Japan-Korea Millennium Forum was established the same year as the 2002 FIFA Korea/Japan World Cup soccer tournament. It is a meeting of presidents of four private universities in Japan and Korea (Korea University, Yonsei University, Waseda University, and Keio University).

The four universities rotate hosting duties. The Forum runs using corporate donations. Meetings were suspended from 2020-2021 due to the COVID-19 pandemic. Keio will host in 2023.

The October 2022 Forum was held face-to-face at Yonsei University

"How to Respond to Climate Change and Energy Transition"
<https://www.keio.ac.jp/en/news/2022/Nov/14/48-133418/>

Outcome : Decided to hold joint online lectures at 4 universities, start considering research collaboration



Partner Universities Case 4: Japan-Korea Millennium Forum

What is the Japan-Korea Millennium Forum?

The Japan-Korea Millennium Forum was established the same year as the 2002 FIFA Korea/Japan World Cup soccer tournament. It is a meeting of presidents of four private universities in Japan and Korea (Korea University, Yonsei University, Waseda University, and Keio University).

The four universities rotate hosting duties. The Forum runs using corporate donations. Meetings were suspended from 2020-2021 due to the COVID-19 pandemic. Keio will host in 2023.

The October 2022 Forum was held face-to-face at Yonsei University

"How to Respond to Climate Change and Energy Transition"

<https://www.keio.ac.jp/en/news/2022/Nov/14/48-133418/>

Outcome : Decided to hold joint online lectures at 4 universities, start considering research collaboration



Foreign embassies and related organizations Case 5: Embassy of the Republic of Indonesia and the Australian Embassy

Embassy of the Republic of Indonesia

The Embassy visited Keio in May 2022 and introduced the Indonesian International Student Mobility Awards (IISMA). Keio joined the IISMA information meeting in September and was considering applying to be a host university. During the Experience Japan Exhibition (EJE) in November, Keio held a session for Indonesian students about the IISMA. In January 2023, Keio applied to IISMA, and became a host university in February.



Australian Embassy

The Embassy visited Keio in April 2022. During the November EJE, Keio held a session on the New Colombo Plan for Australian students.



Foreign embassies and related organizations Case 6: British Council

In November 2022, Keio invited members of the British Parliament to tour the university as part of the British Council's (BC) political engagement program. In December, the UK Minister for Science, Research and Innovation, the British Ambassador, and others visited Keio University.

At "Campus Live Japan" hosted by THE (Times Higher Education) in December, Keio served as partner university and the BC as content partner.

Keio maintains a rich and storied relationship with the UK dating back to its days as a school of English studies. Keio as a whole has a total of 20 agreements with UK universities. Keio hosted the pre-games training camps for Team GB and ParalympicsGB in 2021.



Summary: Advantages and Characteristics

Consortium partnerships allow for:

- A bigger impact than a single university is capable of
- the sharing of values with a global consortium of universities
- Joint involvement in common local issues (e.g. gender issues)
- Opportunities to strengthen relationships and create new alliances among member universities

Long-term partnerships with partner universities allow for:

- Concrete proposals based on **long-standing relationships of trust**
- **Top-down** decision-making

Partnerships with **foreign embassies and related organizations** allow for:

- New opportunities that arise from a given country's higher education and science and technology policy needs



Foreign embassies and related organizations Case 6 (continued): Experience Japan Exhibition (EJE)

From 2011 to 2019, Keio co-hosted **the Education in Japan Fair (EJE)** in London with **the British Council**.

10–15 Japanese universities held booths attended by 500–600 people. Keio collaborated with the Japanese Embassy in the UK, JSPS, scholarship organizations, etc. The events were aimed at students in the UK and Europe (the JASSO Study in Japan Fair was not held) Corporations contributed to the event (e.g. helping with airfare to Japan)

The EJE was held online from 2020.

More than 20 Japanese universities held booths attended by 1,000–2,000 participants from Asia and around the world Seminars hosted by **the Embassy of the Republic of Indonesia, the Australian Embassy, and the University of Tokyo India Office**



Summary: Challenges and Future Perspectives

Consortium partnerships: Collaborating with groups of universities that share values
Long-term partnerships with **partner universities**: Collaborating with universities with similar characteristics

Partnerships with **foreign embassies and related organizations**: Collaborating with foreign governments to form science and technology and higher education policies

↳ These **foundations** are, ultimately, continuations of preexisting **partnerships and the results of built-up exchange.**

Challenges

Maintaining foundations: Keeping up relationships and communication with existing partners
Passive, transitory, or difficult to sustain partnerships: Lack of leaders among researchers and inadequate support systems for leaders (particularly in collaborative research)

Future Perspectives

Utilizing foundations effectively (over 300 agreements): Evaluation and prioritization of existing partnerships
Strategy: Clarification of objectives for each partnership
Sustainable structure: Human resources, structure, and budget



Thank you for your attention.



Leveraging our network of partners - Strategic partnerships and Consortia -

Natalie Konomi, Vice President, Kyushu University



Friday, 3 March, 2023



Senior Management for International

1

Executive Vice President 理事・副学長



Kenji Iwata, Ph.D.
Professor, Faculty of Economics
Academic Interests: EU Financial Integration, Monetary Integration,
International Role of the Euro

Senior Vice President 副学長



Akira Harata, D.Eng.
Professor, Faculty of Engineering Sciences
Academic Interests: Analytical Chemistry, Physical Chemistry,
Applied Laser Spectroscopy



Johan Lauwereyns, Ph.D.
Professor, Faculty of Arts and Science /
Graduate School of Systems Life Sciences /
School of Interdisciplinary Science and Innovation
Academic Interests: Cognitive Science and Bioethics

Vice President 副理事



Shuji Shimizu, M.D. Ph.D.
Executive Research Director, Kyushu University Institute for Asian and
Oceanian Studies (Q-AOS)
Surgeon, specialized in digestive and endoscopic surgery
Academic Interest: Telemedicine



Natalie Konomi, D.Econ.
Professor / Manager, Global Strategies Office
Academic Interests: Organizational Management, Strategic Alliances,
Intercultural Communication



Kyushu-Illinois

Kyushu University and the University of Illinois Urbana-Champaign reached an agreement to be strategic partners and promote mutually beneficial and sustainable collaboration.

- Phase 1**
 - 2010 WPI-I2CNER
 - Decade partnership
- Phase 2**
 - August 2019 Strategic Partnership**
 - 2020 WPI Academy
- Phase 3**
 - 2021 Kyushu-Illinois Strategic Partnership Colloquia Series (Online)
 - 2022-2023 Joint Fund



- Monthly Meetings
- Leadership Call
- Lectures
- Expert Meetings
- JOT Intern
- OIA's regular contact
- Student exchange
- Papers and Grants

Joint fund to support and expand collaborations between both institutions



5 Areas of Collaboration

- Smart Grid and Sustainable Energy
- Environmental Economics
- Data Science/Data Management and Curation
- Library Science
- Humanities

International Consortia



Association of Pacific Rim Universities (APRU)



Established in 1997 by the presidents of UCLA, Berkeley, Caltech and USC



61 leading research universities from around the Pacific Rim with 200,000 academic staff and 2 million students



Aim: To bring together thought leaders, researchers, and policy-makers to discuss and develop 21st century solutions

Outcomes

A Carbon Neutral Society Action Month

- 5-week webinar series (May/June 2022) bringing together a diverse group of experts and researchers to “realize a decarbonized society”
- Aim 1: To encourage brainstorming, cross-disciplinary dialogue, and collaborative problem-solving
- Aim 2: To launch a long-term program that promotes interdisciplinary collaboration between early career researchers (ECRs) from diverse fields



APRU SDG Education for Global Citizenship

- An intercultural, transdisciplinary and interactive program that builds knowledge of global issues and global literacy among students
- Kyushu U is one of the core partners alongside of Chulalongkorn University, The Chinese University of Hong Kong, Shanghai Jiao Tong University, Simon Fraser University and Universiti Malaya



61 Universities Acting Together for Global Impact

- Australia**
 Monash University
 The Australian National University ★
 The University of Adelaide
 The University of Melbourne
 The University of Queensland ★
 The University of Sydney
 UNSW Sydney ★
- Canada**
 Simon Fraser University
 The University of British Columbia ★
- Chile:** University of Chile
- China and Hong Kong SAR**
 Fudan University ★
 Harbin Institute of Technology
 Nanjing University ★
 Peking University ★
 Shanghai Jiao Tong University ★
 Sun Yat-sen University ★
 The Chinese University of Hong Kong ★
 The Hong Kong University of Science and Technology ★
 The University of Hong Kong ★
 Tongji University ★
 Tsinghua University ★
 University of Chinese Academy of Sciences ★
 University of Science and Technology of China ★
 Xi'an Jiaotong University ★
 Zhejiang University ★

- Chinese Taipei**
 National Taiwan University ★
 National Tsing Hua University ★
- Colombia**
 Universidad de los Andes
- Ecuador**
 Universidad San Francisco de Quito
- Indonesia**
 Universitas Indonesia ★
- Japan**
 Keio University
 Kyushu University
 Nagoya University
 Osaka University
 Tohoku University
 Waseda University
- Korea**
 Korea University ★
 KAIST ★
 POSTECH ★
 Pusan National University ★
 Seoul National University ★
 Yonsei University ★
- Malaysia:** Universiti Malaya ★

- Mexico**
 Tecnológico de Monterrey
- New Zealand:** The University of Auckland
- Philippines:** University of the Philippines ★
- Russia**
 Far Eastern Federal University
- Singapore**
 Nanyang Technological University ★
 National University of Singapore ★
- Thailand:** Chulalongkorn University ★
- USA**
 University of California, Berkeley
 University of California, Davis ★
 University of California, Los Angeles
 University of California, Riverside
 University of California, San Diego ★
 University of California, Santa Barbara
 University of California, Santa Cruz
 University of Hawai'i at Mānoa ★
 University of Oregon
 University of Southern California
 University of Washington ★

★Partner universities of Kyushu University

MIRAI



Specific Research Fields:

- ✓ Ageing
- ✓ Material Science
- ✓ Sustainability
- ✓ Innovation and Entrepreneurship
- ✓ AI



Japan

- **Kyushu University**
- Hiroshima University
- Hokkaido University
- Nagoya University
- Sophia University
- The University of Tokyo
- Waseda University
- Tohoku University
- OIST

Sweden

★Partner universities of Kyushu University

- **Lund University** ★
- **Uppsala University** ★
- **Linköping University** ★
- University of Gothenburg
- Umeå University
- Linnaeus University
- Karlstad University
- Örebro University
- Jönköping University
- Luleå University of Technology
- Stockholm School of Economics

Outcomes

MIRAI Research and Innovation Week 2022

- Hosted the conference at Ito Campus in November 2022
- First post-pandemic in-person meeting within the phase 2.0
- More than 300 representatives from universities, companies, ministries, foundations and research funding agencies gathered in Fukuoka
- Stronger connections with MIRAI universities and stakeholders in Sweden
- Promotion of Kyushu University's Stockholm Liaison Office in Sweden (opened in 2020 as its European office)



MIRAI Seed-funding Project

- Strengthen MIRAI researcher collaboration
- Japan side receives approx. 400,000 JPY/project.
- Most submissions and approvals of all 20 member universities in the 2nd term of MIRAI seed-funding (2022)
- Excellent opportunity for ECRs to initiate joint research/publication

Outcomes

Introducing a Co-chair System

- Advantages of the introduction of co-chairs, with chairs in both Japan and the UK: raising RENKEI's visibility to stakeholders, facilitating deeper and broader cooperation, supporting discussion among members, ensuring RENKEI's academic priorities are met
- Kyushu University and the University of Southampton as co-chairs for the first year (until March 2023).
- Many opportunities to communicate with UK member and non-member universities and UK governmental sectors



Fostering ECRs

- RENKEI ECR fellowship program as a part of its 10th anniversary project.
- Kyushu University sent two students and a mentor professor with travel grant support

➔ Joining international consortia helps promote diverse ECRs

RENKEI



The Japan-UK Research and Education Network
for Knowledge Economy Initiatives

- Partnership of 6 Japan and 6 UK research intensive universities
- The British Council acting as its secretariat
- Aim: Strengthening the knowledge exchange and research collaboration between Japan and the UK
- Two priority areas for creating new joint research:
 - ✓ Climate Change
 - ✓ Health

- Japan**
- **Kyushu University**
 - Kyoto University
 - Tohoku University
 - Nagoya University
 - Osaka University
 - Ritsumeikan University
- UK**
- University of Edinburgh
 - **University of Leeds**★
 - University of Liverpool
 - **Newcastle University**★
 - **Durham University**★
 - University of Southampton
- ★ Partner universities of Kyushu University

Thank you

Prof. Natalie Konomi
Vice President
konomi.natalie.909@m.kyushu-u.ac.jp



循環型社会構築を目指したアジア・アフリカ諸国との
SATREPSプロジェクトによる分野横断型戦略的パートナーシップの推進

Strategic Interdisciplinary Partnerships through
SATREPS Projects with Asian and African Countries
towards Building a Recycling Oriented Society



Tatsuki Toda, Prof. Dr.
Faculty of Science and Engineering, Soka University



SATREPS: Science and Technology Research
Partnership for Sustainable Development

SATREPS is a Japanese government program that promotes international joint research, structured as a collaboration between the Japan Science and Technology Agency (JST) and the Japan International Cooperation Agency (JICA), which provides development assistance (ODA).

- 1. International Cooperation
- 2. Addressing Global Issues and Advancing Science
- 3. Capacity Development



The Project for Continuous Operation System for Microalgae Production Optimized for Sustainable Tropical Aquaculture (COSMOS) (Malaysia)

Accumulation of sludge in aquaculture pond

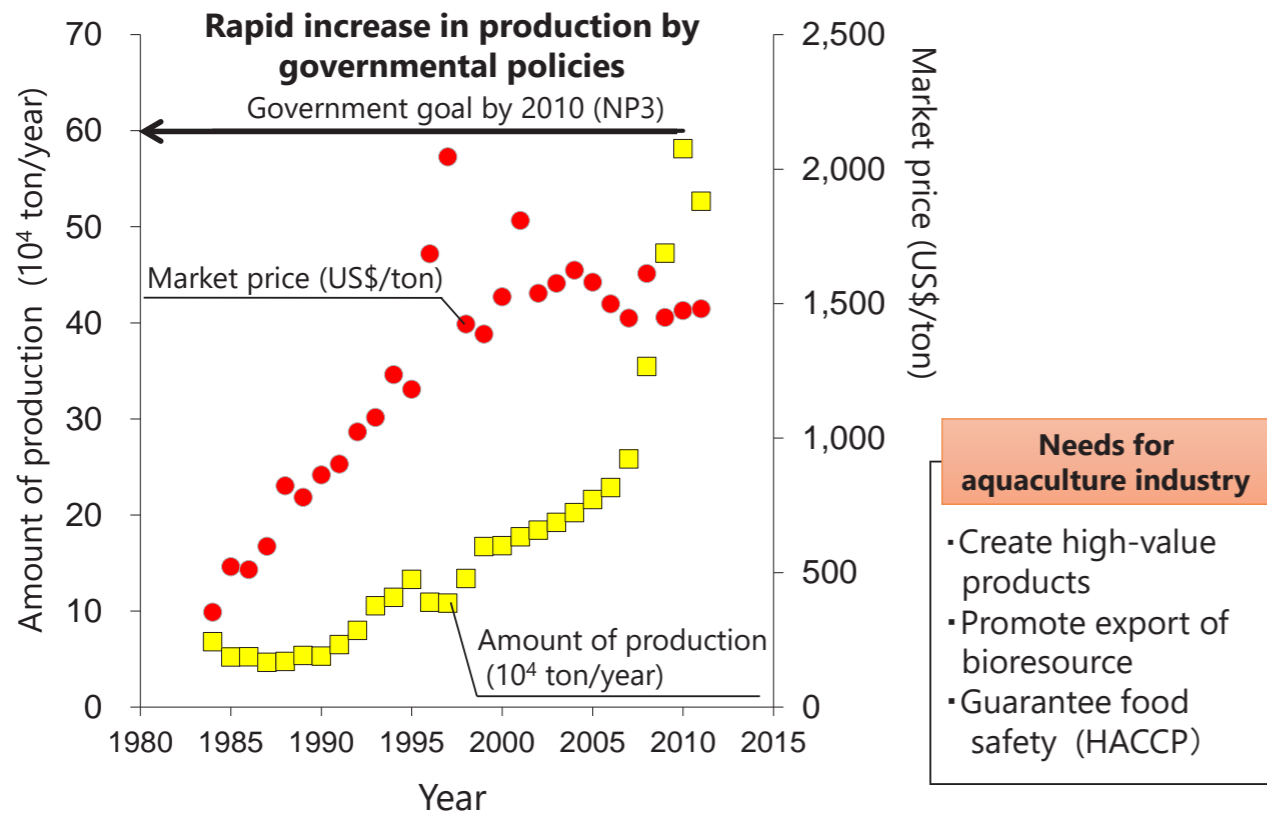
PLANKton Eco-engineering for Environmental and Economic Transformation (PLANE3T) (Ethiopia) / "Eco-engineering for Agricultural Revitalization Towards improvement of Human nutrition (EARTH)" in Ethiopia

Water hyacinth overgrowth in Lake Tana

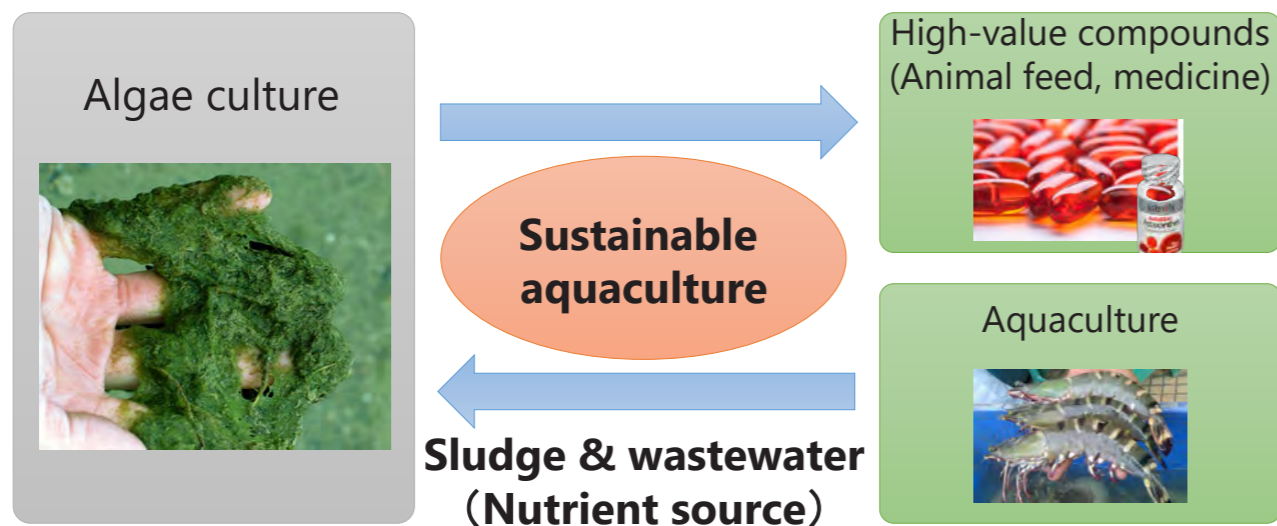
SATREPS JICA JST

The Project for Continuous Operation System for Microalgae Production Optimized for Sustainable Tropical Aquaculture (COSMOS)

Background: Rapid growth of aquaculture industry in Malaysia

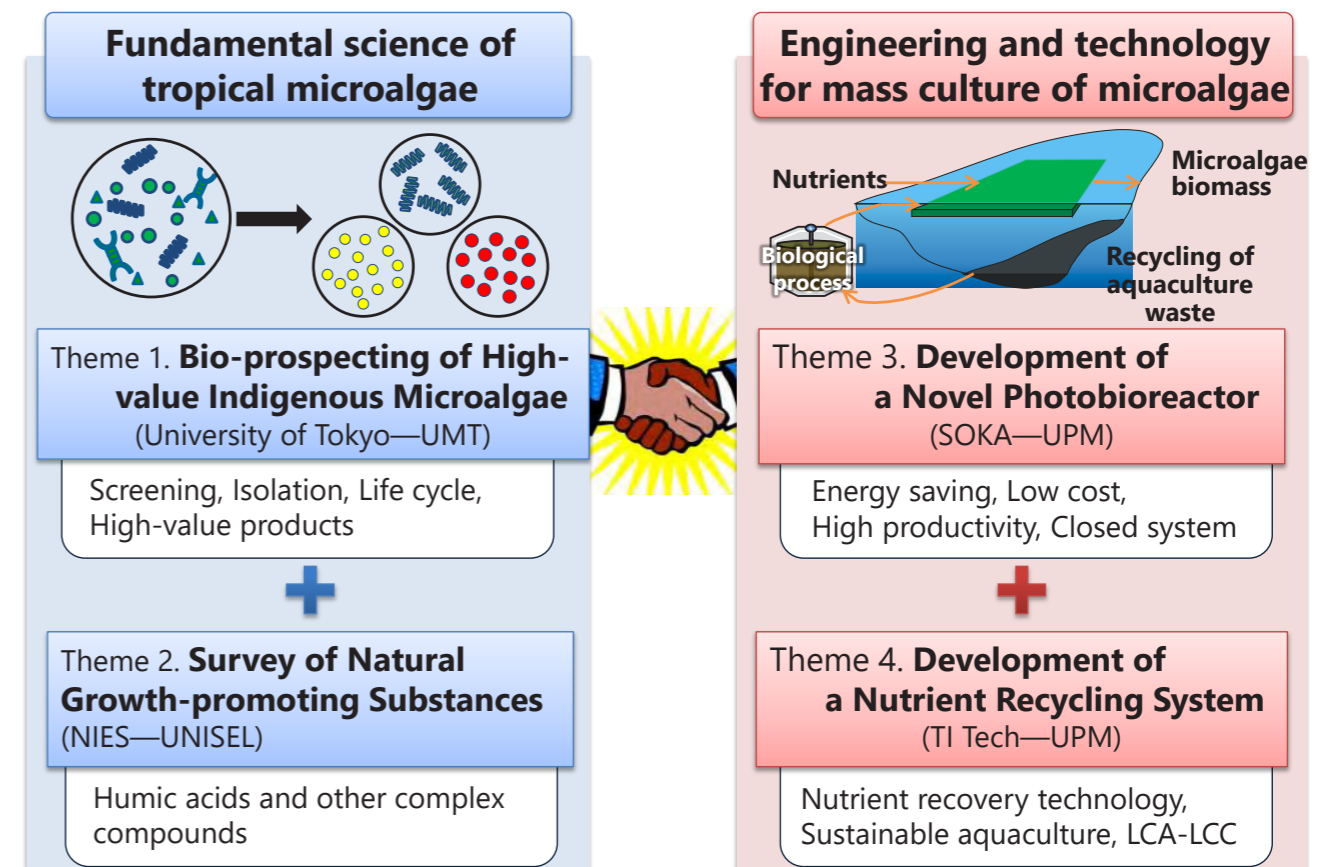


Establishment of sustainable tropical aquaculture system by incorporating microalgae mass culture

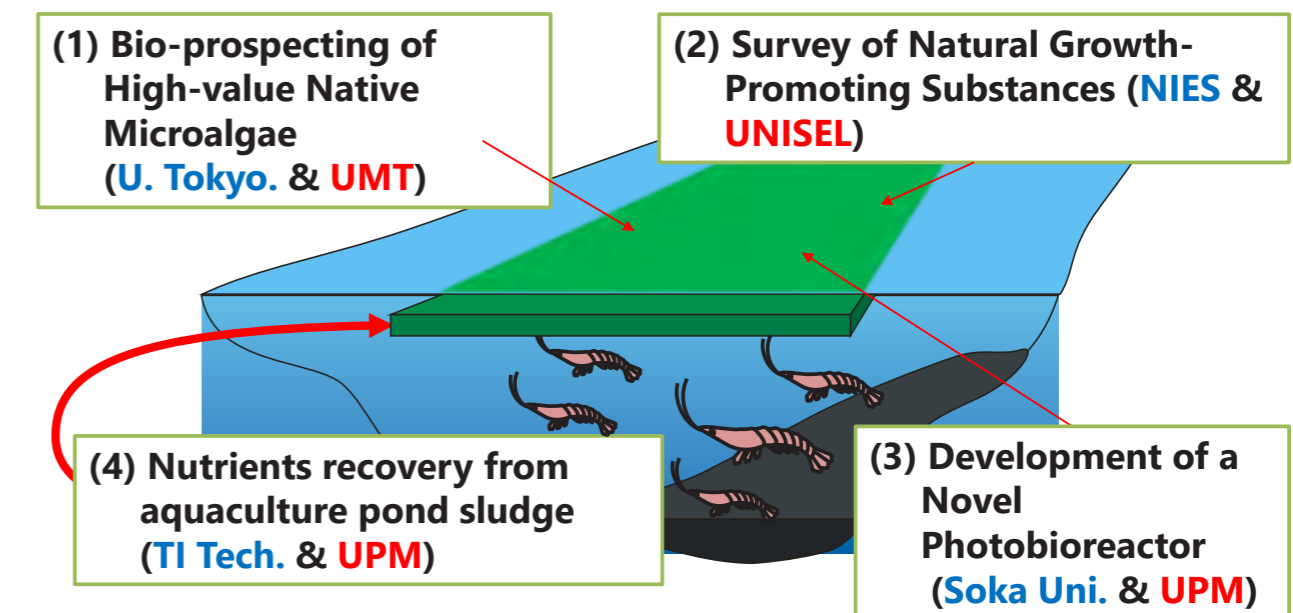


1. High CO_2 fixation capacity (more than 20-fold of terrestrial plants)
2. Production of high-value products (health supplements, functional food, medicine source, etc.)
3. Utilization of nitrogen and phosphorous in sludge and wastewater (mitigating water pollution)

Research Structure of COSMOS

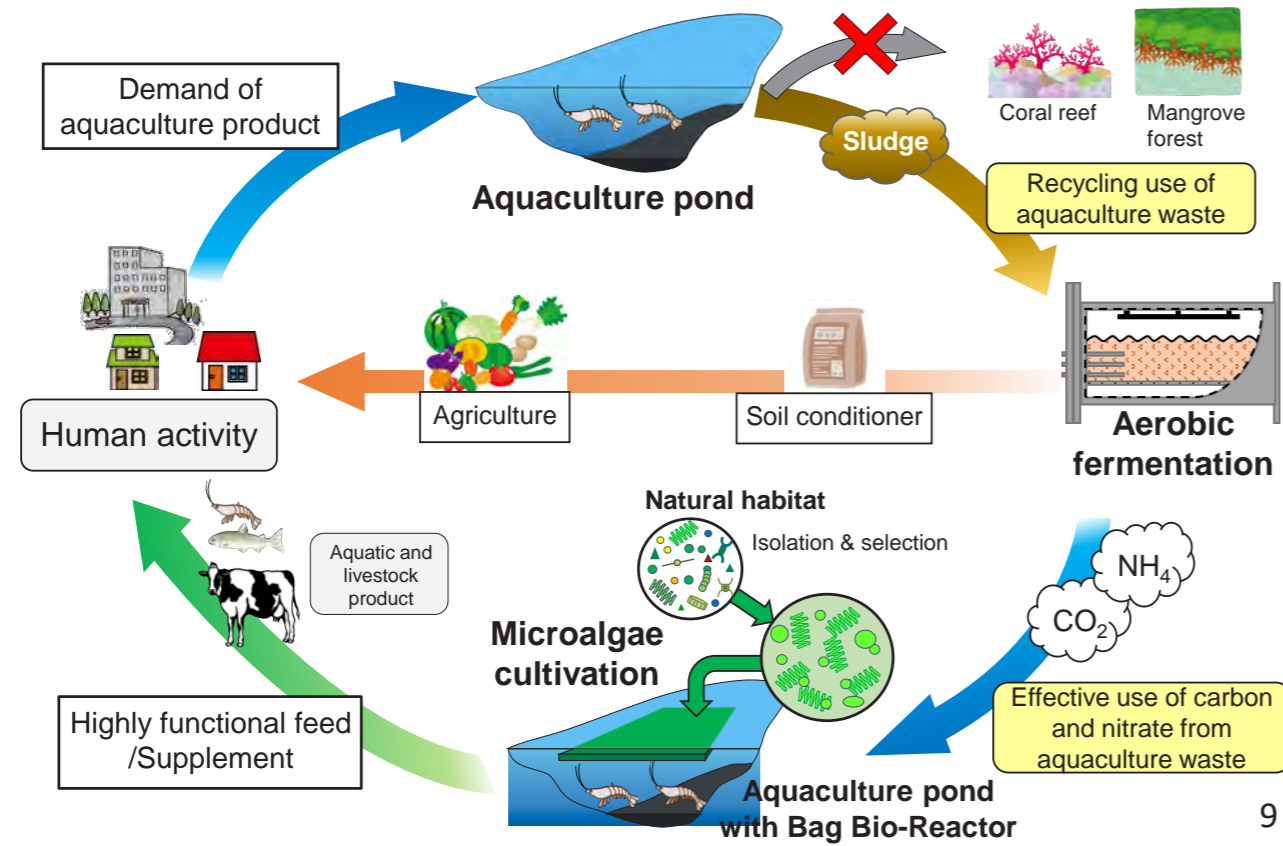


Sustainable Aquaculture System Combined with Microalgal Mass-culture



Production of high-value microalgae using nutrients from aquaculture sludge → **Sustainable Aquaculture**

Continuous Operation System for Microalgae Production Optimized for Sustainable Tropical Aquaculture (COSMOS)



9

National problems and policies in Ethiopia

Conservation of lake ecosystem and biodiversity, and utilization of water hyacinth

- Federal and local governments investing huge budget and human resources every year to remove water hyacinth
- Difficult to eradicate because of fast proliferation

National Water Hyacinth Eradication Campaign

2012~2018

Total number of labor : 1 million people

Total labor cost : 100 million Ethiopia Birr

(~USD \$ 2.6 mil)



<https://allafrica.com/stories/201709060104.html>

EARTH
Since 2021
Ethiopia
SOKA UNIVERSITY

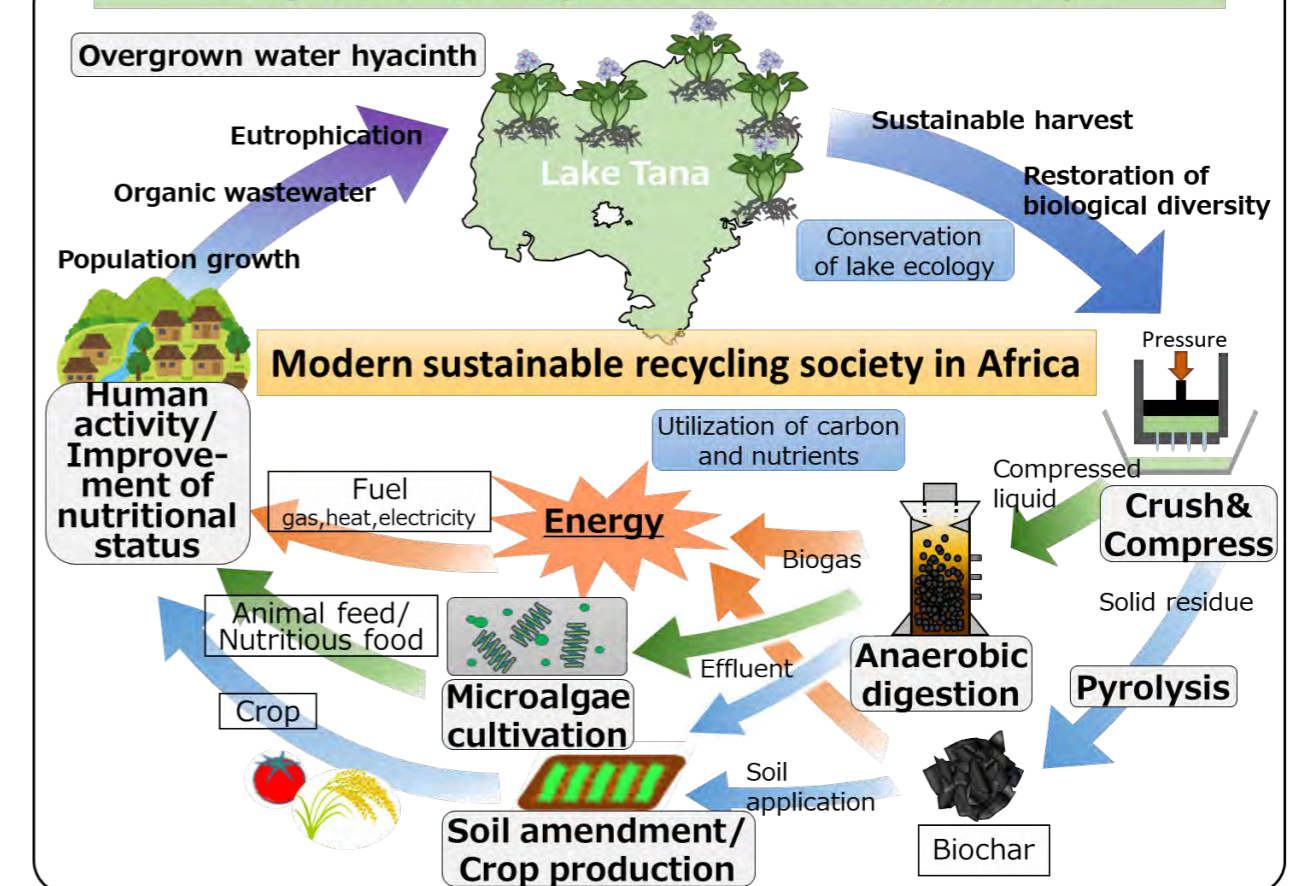
The PROJECT for Eco-engineering on Agricultural Revitalization Towards Human Health Improvement (EARTH): Transforming Water Hyacinth to Energy and Nutrition

EARTH
Eco-engineering for Agricultural Revitalization Towards Improvement of Human Nutrition

SOKA UNIVERSITY

Management and effective utilization of overgrown water hyacinth in Lake Tana, Ethiopia

12



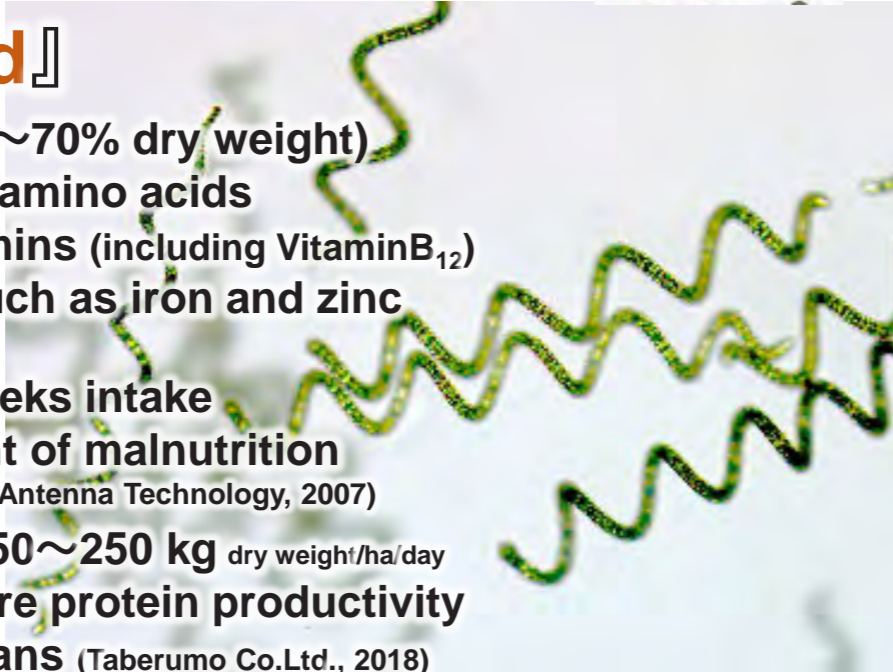
Key product: Microalgae *Spirulina*

Spirulina originated in Ethiopia
Arthrospira fusiformis



『Superfood』

- High protein (50~70% dry weight)
 - Whole essential amino acids
 - 10 kinds of Vitamins (including VitaminB₁₂)
 - Rich minerals such as iron and zinc
- 1g/day for 6 weeks intake
→ Improvement of malnutrition
(Antenna Technology, 2007)
 - Productivity: 150~250 kg dry weight/ha/day
→ 20 times more protein productivity than soybeans (Taberumo Co.Ltd., 2018)



13

Capacity Development Activities



- (1) Equipment installation at Malaysian research institute
- (2) Short-term training for Malaysian researchers in Japan
- (3) Workshop, seminar, symposium and outreach activities
- (4) Promotion of career advancement of young researchers



(1) JICA Equipment donation at Malaysian research institute

UPM 49 items



MITSUBISHI TRITON



屋外大型藻類培養装置 (単位プロセス)
Outdoor Scaled-up Bag Reactor Unit System

15

Manual & Protocol 11 manuals

16

Compiled and Published by :

Division of Global Campus Initiatives, The University of Tokyo

Strategic Partnerships Project Websites :

English <https://www.u-tokyo.ac.jp/en/academics/sp-uni.html>

Japanese <https://www.u-tokyo.ac.jp/ja/intl-activities/exchange/sp-uni.html>

All the information on this report is dated March 3, 2023



English



Japanese



東京大学
THE UNIVERSITY OF TOKYO