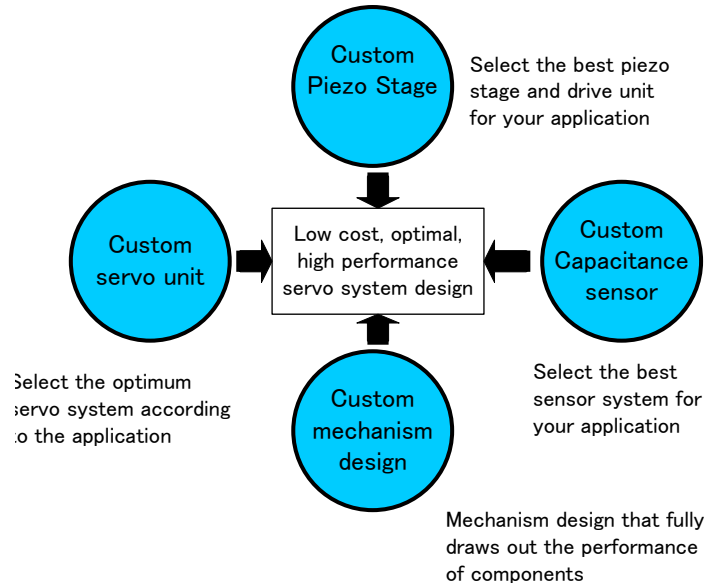


“Shoei System Co., Ltd. (SSL) ” is a company that applies the world's best piezo elements and capacitance sensors, and provides the best products and services that meet customer needs at a low price.

With **Capacitive sensor technology** and
High-speed piezo drive technology
 Contribute to becoming the customer the world's best



Popular! New release!
 Super high-speed drive pulser
 SSL-SPD151P



[Corporate philosophy]

1. Shoei System Co., Ltd. contributes to making society richer and brighter by helping customers who adopt our products and services develop into the world's best companies To do. We provide products that become key devices when incorporated into customer facilities and products. We understand the needs of customers more than any manufacturer and supply products that match them to help customers develop as international companies. This contributes to a rich and bright society.

2. To that end, all the people involved in Shoei System Co., Ltd. will continue their activities of **[Innovation], [Creation], [Elite], [Effort] and [Harmony]**.

The process of making and selling our products is well-thought-out, always innovative, creative and specific to the specialties of expertise and elite. For this purpose, the company's continuous efforts are not self-righteous, and we will endeavor to create a harmonious relationship with each company outside the company, as well as cooperation among employees within the company.



[Company Profile]

Company name Shoei System Co., Ltd.

Head Office Address 23-1 Otanicho, Hachioji City, Tokyo
 192-0034

<http://www.piezoposition.jp>

TEL (0426) 60-1248, FAX (0426) 60-1240

Established November 27, 2000, with a capital of 20 million yen,

Fiscal year end: March 31 every year

Representative Director: Hitoshi Ariu

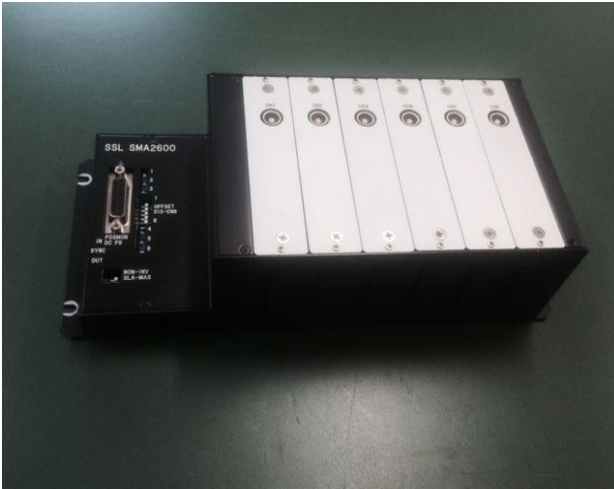
Bank: Mitsubishi UFJ Bank Kumegawa Branch



Capacitance sensors and piezo drive technology are used in space development.

[Company history]

- November 27, 2000 Shoei System Co., Ltd. was established. 3 employees. 3-44-15 Ontacho, Higashimurayama-city
- Signed agency agreement with Queensgate Instruments Ltd, UK, Piezomechanik GmbH, Germany, and US nPoint.
- February 2004 Signed an agency agreement with Lion, Precision, USA.
- July 2004 Increased capital to 10 million yen and changed the organization from a limited company to a stock company.
- October 2004 In-house product _ Servo unit, piezo actuator _ Sensor separation type precision positioning device development started.
- November 2005 A company building was built and moved in 23-1 Otani-cho, Hachioji, Tokyo.
- March 2006 Capital increased to 20 million yen.
In-house product_Development of piezo actuator and sensor-separated precision positioning device completed. .
- September 2006 Germany Feimess Dresden agency contract.
- February 2008 Awarded a letter of appreciation from the University of Tokyo (Tokyo Astronomical Observatory) and the Japan Aerospace Exploration Agency for cooperation in the development of the space development project “Hinode” .
- December 2008 Changed industry from wholesale to manufacturing and started full-scale development.
- October 2009 Commercialized single probe electrostatic sensor
- June 2010: 2-electrode electrostatic sensor commercialized
- August 2014 Commercialized long stroke piezo stage (3mm)
- October 2007: Commercialized digital servo unit
- October 2018 Ultra-high-speed piezo pulse driver commercialized
- Commercialized a vibration control system in December 2018
- March 2019: Commercialization of ultra-high vacuum capacitance sensor.



Multi-channel electrostatic sensor amplifier



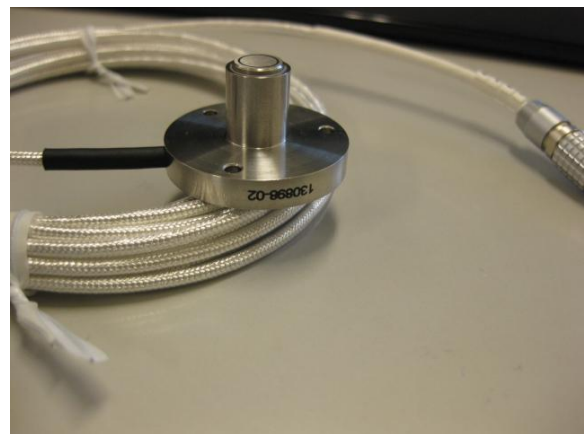
Piezo pulser driver

[Products for sale]

- Capacitance sensor_probe type, 2-electrode type)
- Piezo driver_Linear output type, Pulser drive type
- Servo unit_digital PID control, analog PI control__displacement control, load control, speed control, acceleration control.
- Long stroke piezo stage and various types of piezo actuators
- Special order piezo servo system



Standard single probe electrostatic sensor



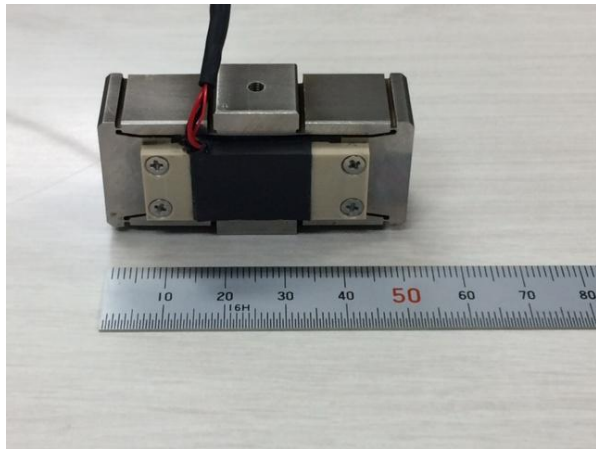
Flange capacitive sensor



Block-type electrostatic sensor



2-electrode capacitive sensor



Small 250µm stroke_Z stage



1mm stroke Z stage



Analog servo unit



Standard analog controller



Standard digital controller