

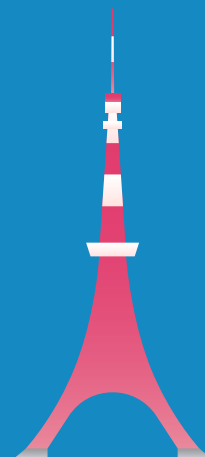
Experience Excellence at UTokyo





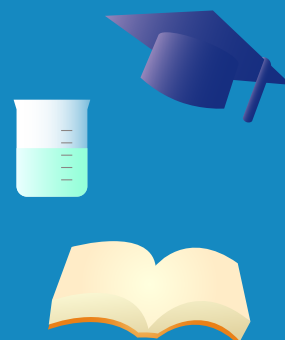
Tokyo

Home to more than 38 million people, the greater Tokyo area has the largest concentration of population in the world. It offers a stunning mix of the traditional and modern, including some of the best food scenes and one of the most efficient transportation systems in the world. It is also an amazingly safe, clean, and affordable city. Experience this truly exciting metropolis while studying at UTokyo!



UTokyo

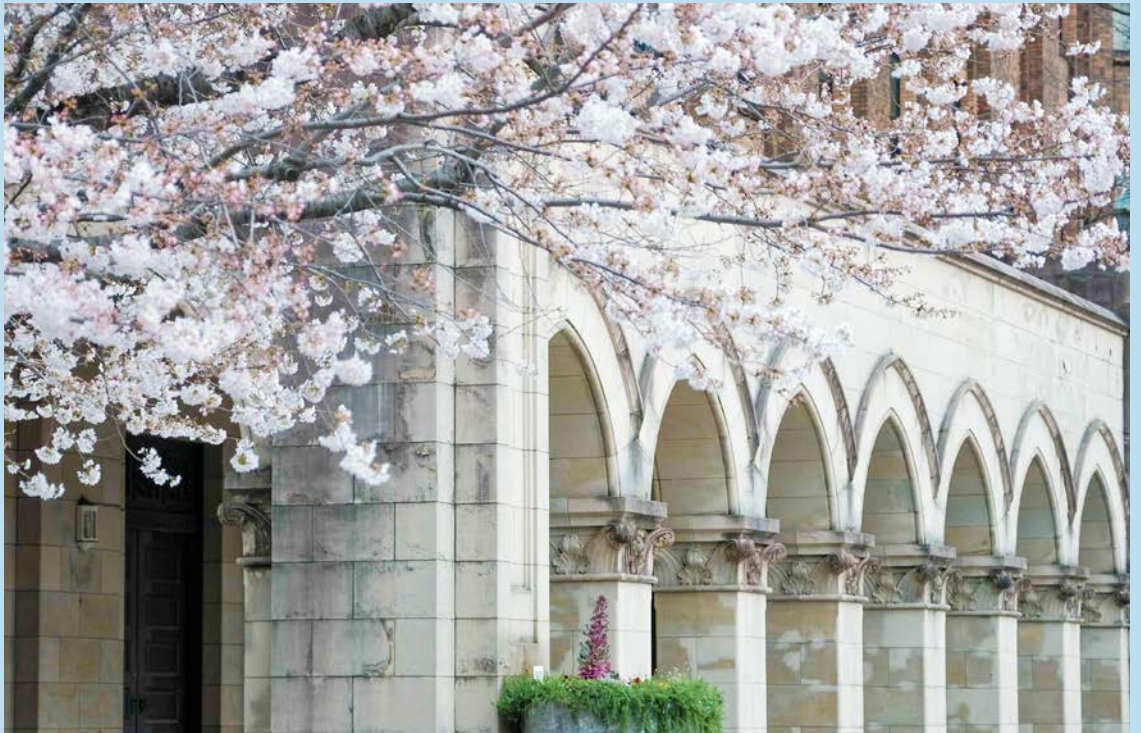
Founded in 1877, UTokyo is regarded as the best university in Japan and consistently attracts talented minds from all over the world. About 28,000 students, representing more than 100 nations, are studying under the guidance of leading scholars in a variety of fields. The university has produced many distinguished graduates throughout its history, including Nobel prize laureates in physics, chemistry, medicine, literature, and peace as well as political and business leaders of Japan and the world.



About UTokyo GUC

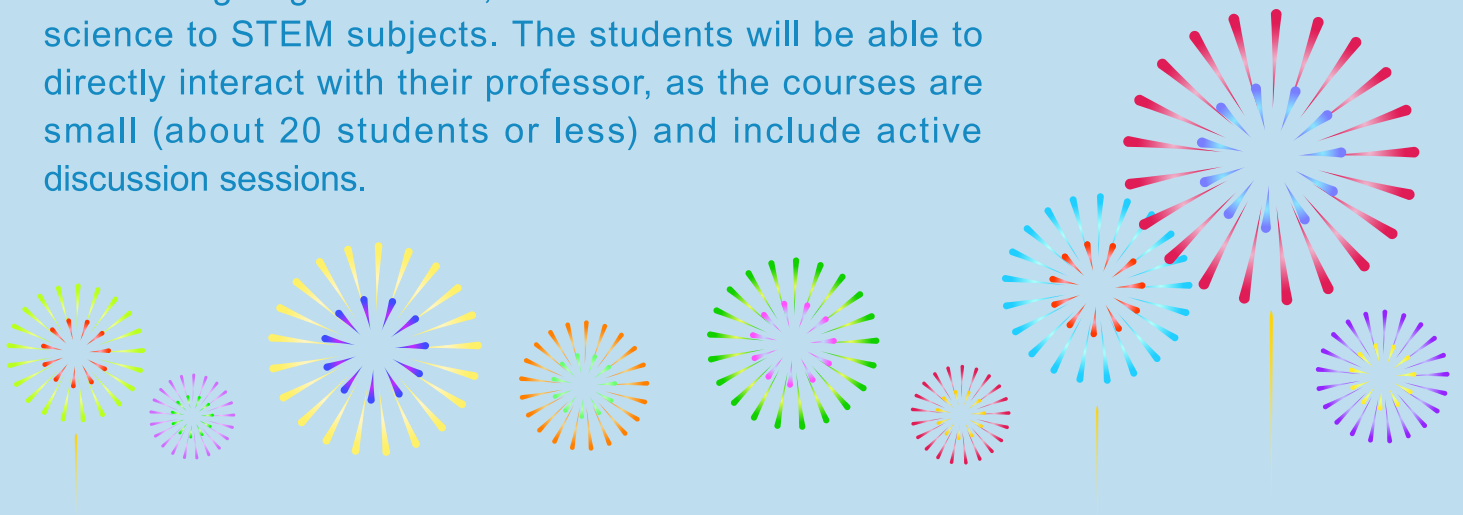


The University of Tokyo's "Global Unit Courses" (GUC) provides a great opportunity for students around the world to experience one of the world's leading universities in East Asia. UTokyo GUC offers a variety of in-person and online courses during the summer with cutting-edge contents, taught by full-time faculty members of the University of Tokyo.



GUC Faculty

All GUC professors are full-time faculty members of UTokyo prominent in their research fields. These leading scholars will offer an exciting range of courses in English with cutting-edge contents, from the humanities to social science to STEM subjects. The students will be able to directly interact with their professor, as the courses are small (about 20 students or less) and include active discussion sessions.



Program Schedule

- 1 **Application Period** Early February to Mid-March
- 2 **Receive Result of Screening** Mid-April
- 3 **Payment Deadline** Mid-April to Late April
- 4 **Program Period** Mid-June to July
 - Term 1: Mid-June to Late June
 - Term 2: Early July to Mid-July
 - Term 3: Late July

Course Details and Application Guidelines



For specific dates and time, please check UTokyo GUC website.

Courses

In-person
Law in Transnational East Asia
Capitalism and the Senses
Contemporary Japanese Politics
Dilemmas of Development in Asia
Group Theory and Its Applications: Introduction to Beautiful Modern Mathematics
Science of Light: From Fundamentals to Advanced Technologies
Sustainable Urban Management
AI for Understanding Human Intelligence
Early Language Acquisition: How Human Infants Learn Language Within Their Social Environment
AI and Social Justice
Online/ On-demand
Sustainability, Social Justice and Resource Management (Online, synchronous)
Writings About Japan: Analyzing Cultural Representations, From Orientalism to Artificial Intelligence (On-demand, nonsynchronous)
Japanese Language Courses
Survival Japanese (Beginner Level)
Japanese Kanji for Kanji Background Students (Intermediate to Advanced Level)
Communication Strategy in Japanese Conversation (Advanced Level)

Global Unit/ Assessment	Students will be rigorously assessed and be given "Global Units" based on their performance and the number of class hours. Upon completion of a course, a Global Unit Certificate, which may be used to calculate credits for transfer to your home institution, will be issued by the University of Tokyo.																											
Contact Hours	15 hours per Global Unit (90 minute-lecture ×10) 7.5 hours per 0.5 Global Unit (90 minute-lecture ×5)																											
Eligibility	Applicants must be currently enrolled in a university as a full-time student outside of Japan or a full-time student of UTokyo (undergraduate and graduate).																											
Language Requirement	All UTokyo GUC courses are taught entirely in English (except for Japanese language courses) and no knowledge of Japanese language is required. Although no certificate of English language skills is required, students must possess sufficient language proficiency to complete university-level courses. The expected minimum proficiency level is that of TOEFL(iBT) 90 or IELTS 6.5.																											
Application Fee	JPY 4,500 Please note the transaction fee of JPY 500 will be charged along with the application fee. The application fee must be paid before application submission by credit card ONLY and is strictly non-refundable.																											
Program Fees & Discounts	<div><div>In-Person JPY 150,000 per Global Unit JPY 75,000 per 0.5 Global Unit</div><div>Online JPY 50,000 per Global Unit JPY 25,000 per 0.5 Global Unit</div><div>Discounts for registering for two or more units: There are discounted rates for students registering for 2 or more units. *Only applies to in-person courses</div></div>	<table><tr><th>Global Units</th><th>Program Fee (JPY)</th><th>Discount (JPY)</th></tr><tr><td>2</td><td>250,000</td><td>50,000</td></tr><tr><td>2.5</td><td>310,000</td><td>65,000</td></tr><tr><td>3</td><td>370,000</td><td>80,000</td></tr><tr><td>3.5</td><td>430,000</td><td>95,000</td></tr><tr><td>4</td><td>490,000</td><td>110,000</td></tr><tr><td>4.5</td><td>550,000</td><td>125,000</td></tr><tr><td>5</td><td>610,000</td><td>140,000</td></tr></table>	Global Units	Program Fee (JPY)	Discount (JPY)	2	250,000	50,000	2.5	310,000	65,000	3	370,000	80,000	3.5	430,000	95,000	4	490,000	110,000	4.5	550,000	125,000	5	610,000	140,000	The program fee must be paid in full after admission is confirmed in April by credit card ONLY. Please note the transaction fee of JPY 500 will be charged along with the total program fee.	
Global Units	Program Fee (JPY)	Discount (JPY)																										
2	250,000	50,000																										
2.5	310,000	65,000																										
3	370,000	80,000																										
3.5	430,000	95,000																										
4	490,000	110,000																										
4.5	550,000	125,000																										
5	610,000	140,000																										
Accommodation	No campus housing is available and students are responsible for arranging their own accommodation. However, UTokyo GUC staff will assist you with finding accommodation in the Tokyo area, which has a range of affordable options for short-term stays. Payment for accommodations is the sole responsibility of the students.																											

Contact

UTokyo GUC utokyo-guc.adm@gs.mail.u-tokyo.ac.jp



Student Voices



Since UTokyo is a prestigious university in the world, the quality of the courses was very impressive. The topics covered in the courses were related to what really concern the world today, and instead of simply imparting knowledge, the courses were more of a place for discussion and thinking, which showed how complex the current world is.

Ms. Lingyu Gu Nanjing Forestry University



UTokyo GUC provides us with great opportunities to meet excellent people. I truly enjoyed this program. I appreciated how the instructor provided the schedule for each day beforehand, making the whole learning process clearer. I also quite enjoyed the way we could talk to different people in different groups. I got to speak with almost everyone participating in this program.

Ms. Ruixin Huang University of Malaya



There were students from all around the world, and we exchanged experiences and knowledge with each other. I know now deeper about the situation in certain countries thanks to my classmates who were very active and critical. They were all very interesting and each of them had an impact on me in the long run.

Ms. Indira Sukmariana University of Indonesia



The teachers were excellent. The course content was very insightful, creative, and relevant. And my fellow classmates were thoughtful and kind, which made taking the classes very enjoyable.

Mr. Marco Lepe University of California, Berkeley



I thought that the quality of teaching was excellent, and the professors were very kind and approachable. The online format was used to its full potential, and the course material was intellectually stimulating and thought-provoking, with connections to other aspects of both academic and everyday life. It was also wonderful to be able to interact with so many people from around the world, with everyone bringing different opinions and fascinating stories to the discussions.

Ms. Anna Kamenova Valchanova University College London