

國立陽明交通大學

NATIONAL YANG MING CHIAO TUNG UNIVERSITY



Exchange Program Guideline

Office of International Affairs



Office of International Affairs (OIA)



Contact Information

Outbound Exchange Program (NYCU students to your university)

- Ms. Cherrie Chow (Chiaotung Campus)
- cherrie@nycu.edu.tw

Inbound Exchange Program (Students from your university to NYCU)

- Ms. Lily Cheng (Chiaotung Campus)
- lilycheng@nycu.edu.tw

Inbound & Outbound Exchange Program

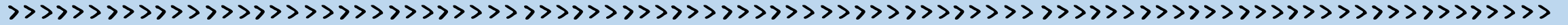
- Ms. Ina Huang (Yangming Campus)
- yyyhuang@nycu.edu.tw

Inbound Exchange Student Services

- Ms. Iris Chuang (Chiaotung Campus)
- irischuang@nycu.edu.tw

- Ms. Meggy Niu (Yangming Campus)
- meggyniu@nycu.edu.tw





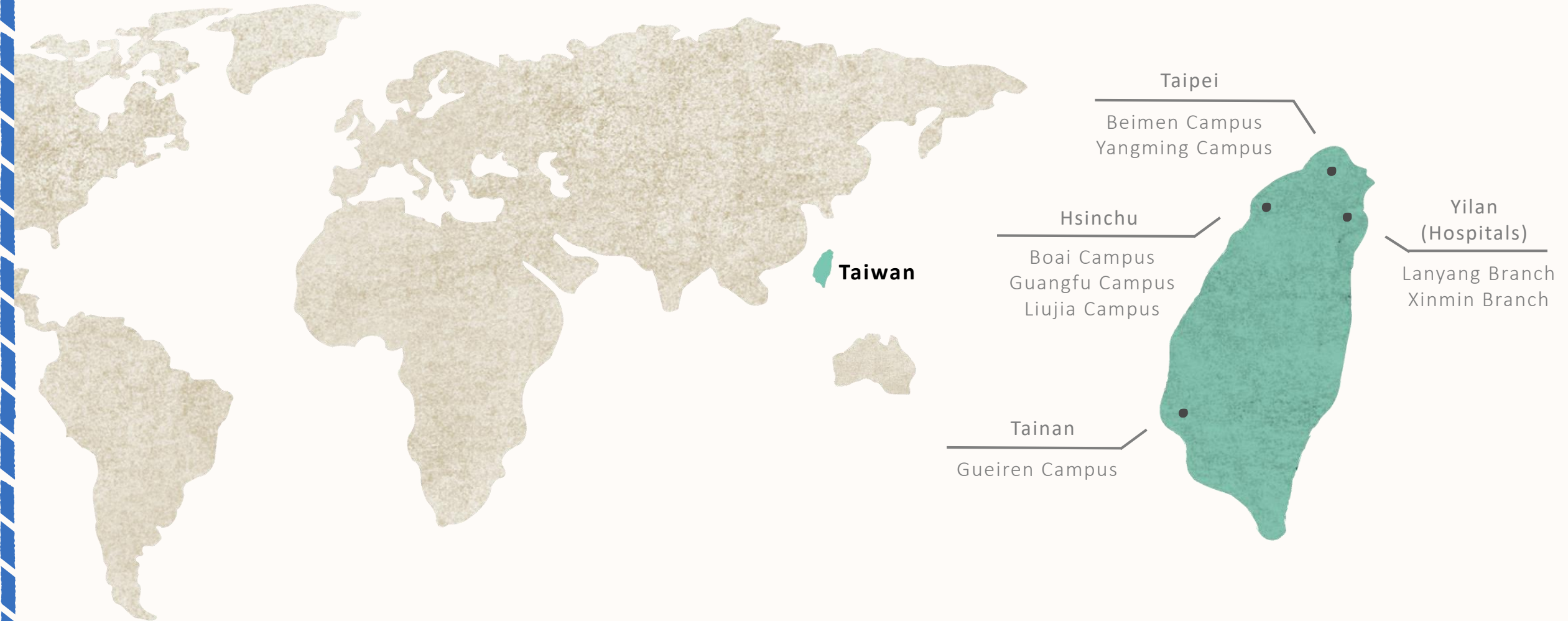
Facts about NYCU



National Yang Ming University (hereinafter referred to as Yang Ming) and National Chiao Tung University (hereinafter referred to as Chiao Tung) formally merged into National Yang Ming Chiao Tung University (NYCU) on February 1, 2021. Yang Ming, which focuses on biomedical research, and Chiao Tung, which focuses on electronic communication research, are both top tier universities in Taiwan. It is imagined that the merger will eventually bring forth a great and innovative university that is second to none, with 1,400 teachers and 17,000 students collaborating to create a great generation that will develop and further Taiwan's emerging smart medical industry.

陽明交大
NYCU

Campus Map



NYCU at a Glance

Key Figures and Rankings

Rankings (By subjects)

#117 Engineering - Electrical & Electronic

#129 Computer Science & Information Systems

#139 Engineering & Technology


#101-150 Nursing

#151-200 Medicine

Chiaotung Campus

 Students
15,182

5,905 Undergraduates
9,277 Graduates

 Faculty
1,271

Yangming Campus

 Students
4,851

2,209 Undergraduates
2,642 Graduates

 Faculty
1,083

*2019 Spring, Center for Institutional Research and Data analytics, NYCU

*QS Quacquarelli Symonds Limited, 2021

19 Colleges

- Guangfu Campus
- Yangming Campus
- Other Campuses

Computer Science



Electrical & Computer Engineering



Engineering



International Semiconductor Technology



Law



Science

Both Yangming and Guangfu campuses have the College of Humanities & Social Sciences.

Artificial Intelligence (Gueiren Campus)



Biological Science & Technology (Boai Campus)



Hakka Studies (Liuja Campus)



Management (Guangfu & Beimen Campus)



Photonics (Gueiren Campus)

Humanities & Social Sciences

Biomedical Science & Engineering



Dentistry



Life Sciences



Medicine



Nursing



Pharmaceutical Sciences



Inbound Exchange Program





Introduction

NYCU offers inbound international students an opportunity for academic and cultural immersion.

Types	Remarks	How to apply
Inbound Exchange Program	Students enrolled (or matriculated) at partner institutions and nominated by coordinators of home institutions.	The nomination link will be email to partner institutions' coordinator in every nomination period. The link is different in each semester.
Inbound Visiting Program (fee-paying exchange)	Students enrolled at partner institutions but not officially nominated by home institution; or, students from non-partner institutions.	Students apply directly via the online application system in the application period.

Important Dates

Application timeline

Students may choose to exchange for one semester or one academic year.

*Academic year at NYCU begins in September; full academic year exchange can only begin in Fall Semester.

Semester	Nomination Deadline	Application Deadline
Fall Semester (Sep. to Jan.)	March 30 th	April 15 th
Spring Semester (Feb. to Jun.)	September 30 th	October 15 th

*The confirmed academic calendar will be announced around late June each year.

NYCUCourse Timetable

Instruction	1.	Website: https://timetable.nycu.edu.tw/
	2.	Choose English in “Language”, and the system will switch to English version.
	3.	Choose “College” in “Search for Department” and search for the program under the college you choose.
	4.	Tick the box in front of “Other Search Parameters” and click on “English Medium Courses”.
	5.	The course timetable will be finalized about two months before the start of each semester. Students could refer to the timetable of the previous semesters during application period.





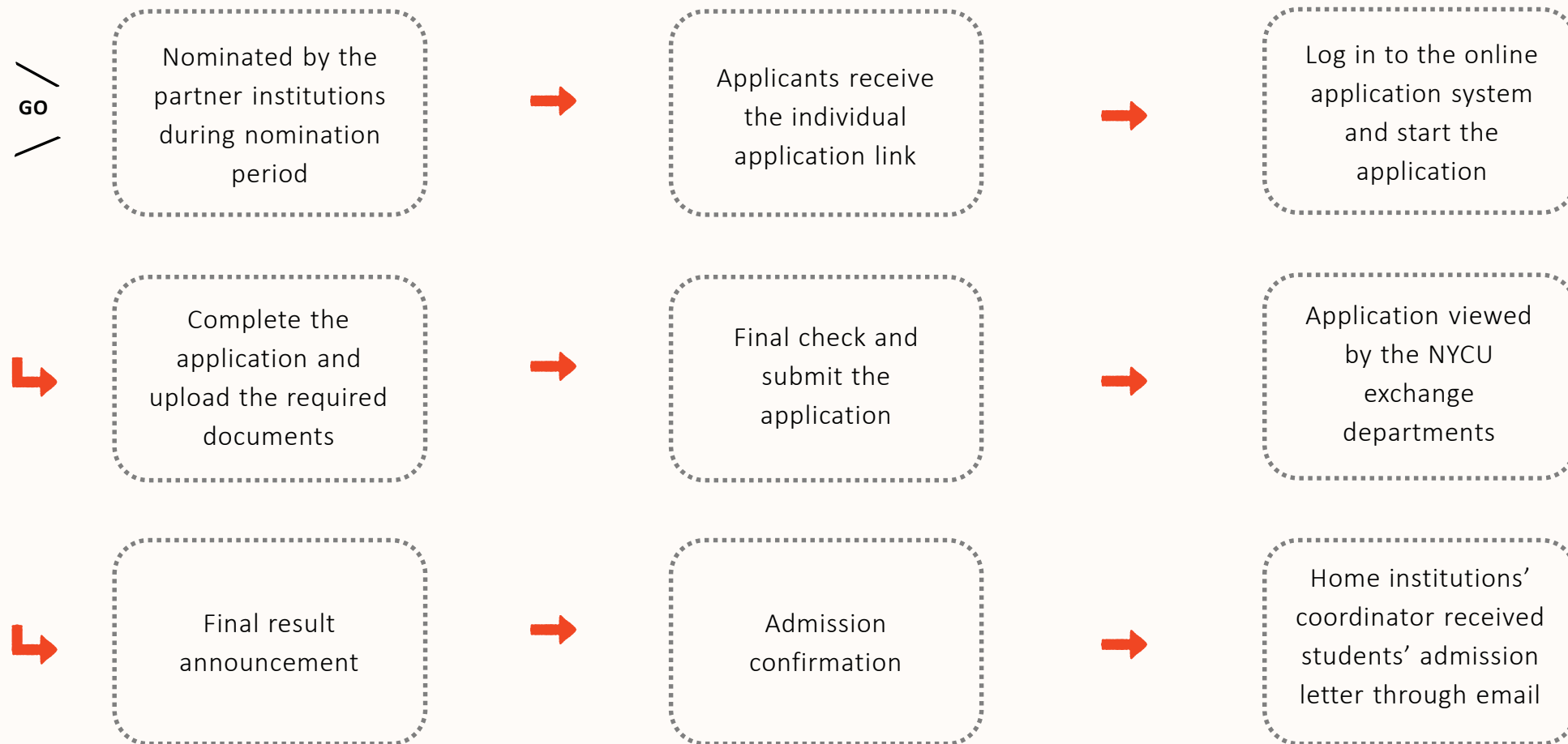
NYCU Departmental Application Requirements

****Please read the requirements carefully before applying****

<https://drive.google.com/file/d/122j-Fur8Ja4MsdoKv9ec07HeHGr2Qqbj/view?usp=sharing>

1. The department would review the applications and the supporting documents; each department reserves the right to reject or re-allocate applicants to appropriate department.
2. Minimum credit requirement (per semester)
Undergraduate: 9 credits
Graduate: at least 2 academic courses
(Please check with home institution for credit transferability)
3. **Students are able to choose courses across departments or colleges (not limited to the enrolled department/college only).**
Please be aware that some professors may require the students to own basic knowledge about the course.
4. Some popular courses are very competitive and exchange students may not be able to get in. It is suggested students to be more flexible about course choice.
5. **College of Management** is limited to “Final-year undergraduate students or graduate students” . Most English-taught courses are offered in graduate level.

Application Procedures

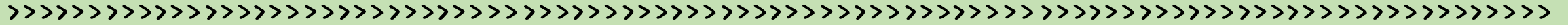


Application Documents

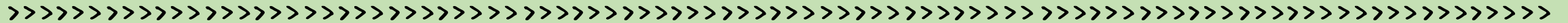
Required Documents

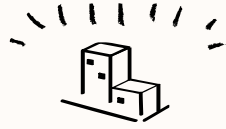
Please prepare all the documents and submit them to the online application system. The documents should be PDF format and in English.

NO.	Documents	Remarks
1	Application form	Both applicant and home institution' s coordinator have to sign the last page.
2	Curriculum vitae (CV)	Personal resume in English.
3	Study Plan	It may include your motivation and a tentative list of courses the student would like to take during the exchange period.
4	Official transcript	The academic records approved by the home institution and should be in English.
5	Official enrolment letter	The enrolment letter from the home institution or "valid" student card.
6	Passport (Information page)	It should have at least 6 months of validity.
7	Supporting document (optional)	E.g. proof of language proficiency, certificate of awards or competitions, etc.
8	Recommendation letter (optional)	The letter from the home institution' s coordinators or professors.



Facilities & Student Services





University Facilities

- 24-hour self-study center & study room
- Prayer room
- Bookstore
- Dry cleaning service
- Hair salon & optician



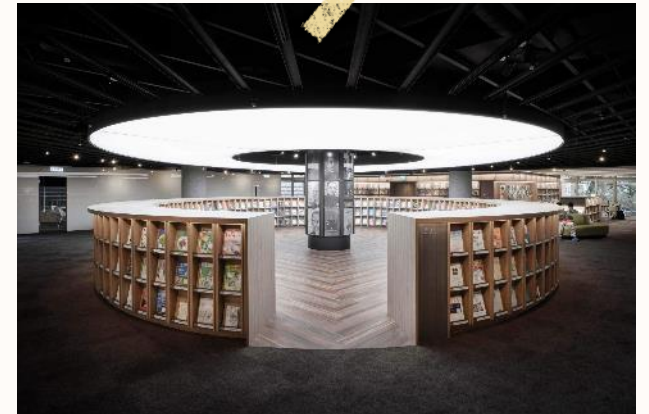
1 Swimming Pool (outdoor/ indoor)



2 Fitness Center



3 Dining Hall



4 Library



5 Library – Reading Area



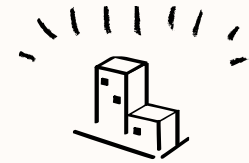
6 Tennis Court



7 General Court



8 Basketball Court



University Facilities

Division of Overseas Student Affairs is part of the Office of International Affairs, and is established to offer on-site services, such as accommodation, insurance, visa, registration and other student needs. Furthermore, International student society, host-family arrangement, and international student emergency are taken care of by them as well.





Orientation

The orientation will be held at the beginning of each academic semester. It will introduce NYCU to new international students and covers important and helpful topics.

Free Chinese Courses

- One-on-one tutoring
- Chinese Cultural Salon: Cultural experience courses
- Courses range from introductory to advanced levels (4 levels)
- Elective courses focusing on useful situational conversations



Chinese Language Division,
Language Teaching and Research Center

National Yang Ming Chiao Tung University

