

PROGRAM INFORMATION -Face to Face-

*Program details may be subject to alteration

as of 2024/10/7

		University of Otago
Program date and time *Please send the timetable at your earliest convenience.	From	(Orientation on Thu 20 & Fri 21 Feb) Monday, 24 February 2025
	To	Friday, 21 March 2025
	Recommended arrival date	Wednesday, 19 February 2025
	Recommended departure date	Saturday, 22 March 2025
Program contents/outline	1.English language tuition 2.Opportunities for cultural experiences and learning about New Zealand provided through: •The orientation programme •Auditing University of Otago classes •Friday afternoon out-of-class activities (see appendix) •Weekend excursions such as trips to Queenstown, Milford Sound, the Otago Peninsula. The students will have the opportunity to take part in at least 2 such excursions during their stay (see appendix) 3.A weekly seminar on New Zealand history, culture and environment. 4.Student support services 5.Homestay accommodation 6.Transfer between the UOLC and Dunedin's Momona airport 本学学生が集団で参加するプログラムで、参加学生は主に本学学生及び他大学の日本人学生となります。	
Eligibility and Requirements	English proficiency (e.g. TOEIC, TOEFL, IELTS scores, etc.)	Need to complete ELC placement test
	Undergraduate/Postgraduate	Both UG and PG are able to apply
	Nationality	All students enrolled at the University of Tokyo are welcome to participate, regardless of their nationality
	Pre and post Assignment (if any)	ELC placement test
	Necessary documents (e.g. a copy of passport/student ID card, etc.)	Copy of Passport 選考結果通知後直ぐに提出が必要です。
	Others (majors, background, etc.)	Any
Program fees per student	NZ\$4,509.45 per person (includes Home Stay, insurance, students services fee. Please see the attached proposal for breakdown.)	
Number of Students who will be accepted	Minimum: N/A	
	Maximum: 40	
Accommodation in detail	\$1,798 (31 nights at \$58 per night) Homestay Rates: \$58 per night / \$63 per night for special dietary needs / \$67 for students on sports training programmes Homestay placement fee: \$450	
Application procedures	Online application need to be submitted along with a copy of your passport via https://www.otago.ac.nz/uolcfy/apply	
Payment procedure in detail	https://students.convera.com/uo#!/	

Deadline for prospective participants to complete the application	2024/12/6 ※本部国際教育推進課への応募締切は11/12(火)正午です。上記はオタゴ大学への申請手続き締め切り日ですのでご注意ください。
Payment due	Pay all fees as soon as possible after an offer of place is received, and at the latest at least 20 working days before arrival. (Note that homestay placements will not be made until fees have been paid.)
Cancel policy	https://www.otago.ac.nz/uolcfy/about/policies
Letter of acceptance	will be issued
Progress report or transcript	will be issued
Certificate	will be issued
Credits	N/A
Other participants from different universities	Yes
Airport transfer services	Dunedin Airport Our Homestay office will arrange the pick up and drop off shuttle for your students depends on their arrival and departure time. ※募集要項「6. 航空券について」要確認

Programme Dates for The University of Tokyo Center for Global Education

The programme will consist of 23 hours per week of English-language tuition and optional Friday afternoon activities and will:

- Raise students' confidence and ability to communicate in English.
- Provide exposure to the culture and natural life of New Zealand, including visits to local attractions.

Suggested Four-week Programme:

Wed 19 Feb 2025	Students arrive at Dunedin Airport, meet host families
Thu 20 – Fri 21 Feb	Orientation
Mon 24 Feb	Classes begin
Fri 21 Mar	Classes finish and farewell ceremony
Sat 22 Mar	Depart from Dunedin

Programme Fees for The University of Tokyo Center for Global Education

The fees are **PER STUDENT** and are in NZ dollars. The New Zealand Government's 15% goods and services tax (GST) is included where applicable. Fees are payable in advance.

	Full Fees for 2025
Full-time Tuition	\$501 per week
Orientation (2 days where applicable)	-
Student Services Fee	\$28.35 per week
Homestay Placement Fee	\$450
Homestay	\$1,798 (31 nights at \$58 per night)
	Homestay Rates: \$58 per night / \$63 per night for special dietary needs / \$67 for students on sports training programmes
Insurance	\$71.25
Airport Pick up (Non-refundable)	\$72.8
Total	\$4,509.45

Notes to Fees

Exclusions

The following are not included in the fees schedule:

- Personal spending; possibly allow \$80 per week for extra spending
- Daily transport between the ELC and the homestay; allow \$30 per week
- Optional activities and excursions and trips
- International examination fees such as IELTS.

Payment of Fees

The final date for payment of fees is 20 working days before enrolment. However, students will only be placed in a homestay once payment is received. If a receipt is needed for visa purposes, payment needs to be received at least 14 days before arrival.

Airport Transfer Surcharge

A one-off airport transfer fee applies to all group students. This fee covers the transfer by shuttle from/to Dunedin airport to the city for both the arrival and the departure. Please note: Bookings for arrivals and departures into/from Dunedin airport should be made to arrive/depart after 9am and excluding New Zealand public holidays as this incurs additional surcharge fees by the shuttle company.

Health and Travel Insurance Requirements

The New Zealand Government requires that international students have appropriate and current medical and travel insurance while studying in New Zealand. Insurance policies must meet the requirements of the *Code of Practice*.

It is the University of Otago's responsibility under the *Code of Practice* to ensure all enrolled international students have compliant medical and travel insurance that meets the *Code of Practice's* minimum requirements.

[Studentsafe Inbound University](#) is the recommended insurance policy. This is a comprehensive insurance policy designed for inbound international students and administered by all the universities in New Zealand. Studentsafe offers direct billing for users of the University of Otago Student Health Service, and support from our staff for claims and urgent assistance.

NOTE: All students under this agreement will be charged for Studentsafe and may only opt out of Studentsafe by prior agreement with the University of Otago and presentation of an alternative Code compliant insurance policy.

More information about insurance can be found on our website

<https://www.otago.ac.nz/international/support-services/healthcare.html>

Information on the Studentsafe insurance policy can be found on the following website:

<https://www.insurancesafenz.com/studentsafe/student-safe-inbound-university>

Insurance Rates

1 months \$67.5	4 months \$270	7 months \$472.5	10 months \$675
2 months \$135	5 months \$337.5	8 months \$540	11 months \$742.5

3 months \$202.5	6 months \$405	9 months \$607.5	12 months \$810
------------------	----------------	------------------	-----------------

Note these fees are current at the time of issue of this agreement, but any increases are beyond the control of the ELC and will be passed on directly to students. Immigration NZ now requires students to be insured for the length of a student visa, and therefore insurance charges are calculated accordingly.

Cancellations

Full details are available in our fees policy here:

<http://www.otago.ac.nz/uolcfy/about/policies/index.html#Fees>

Please check the homestay policy at this link below:

<https://www.otago.ac.nz/uolcfy/about/policies/index.html#Fees>



APPENDIX ONE

1. Resources and Facilities

The University of Otago English Language Centre provides the following:

Modern Teaching Facilities

The facilities include large, well-equipped student break-out areas, a multimedia language laboratory, a modern computer suite, and an Independent Learning Centre.



Student Support

Our Student Support team provides non-academic orientation, pastoral care, co-curricular activities and cultural settling support on campus to all ELC students. The Student Support team can also help students access other University and community support services, including Student Health.

24-hour contact and support for all University of Otago and ELC students is provided by the University of Otago Proctor's Office and Campus Watch team. The Proctor's Office will liaise with the Student Support team as required for any after-hours student incidents.

Full Access to University Facilities

Students receive a University of Otago student ID card, which provides full access to the University's facilities, including Student Health, the UniPol sports, gym and recreation centre, ITS information technology services, libraries and cafeterias on campus.



Internet Access

Students have free WIFI internet access throughout the University campus and in homestay.

High-Quality Homestay Programme

Unless otherwise agreed, students will live in a local homestay in a welcoming and supportive family-based environment.

Living with a homestay family is an excellent opportunity for students to experience New Zealand culture and practise using their English in a home environment. Students may have

an opportunity to join their host family's recreational, sporting or cultural activities, and will be able to experience a local way of life.

The student's bedroom is private and is fully furnished and includes a study desk and a heater. Students are given a key to the host's home so they may be as independent as they wish.

All homestays have been personally assessed by the University of Otago, and homestay hosts are police-vetted and reference-checked in alignment with the Code requirements to ensure a safe and supportive living environment.

With over 200 host families on our database, we can offer a variety of homestay families to suit most students' needs and preferences (based on availability at the time of application). This includes families with or without children, older couples, and single person homes. Each home is individual and unique. Hosts have a vast amount of knowledge and experience to offer students. Students are provided with 3 meals each day and a variety of meal options can be offered, for example, vegetarian, gluten-free, and any specific dietary requirements the student has will be taken into account. It is important to enter all dietary requirements on the application form, including medical conditions, allergies or dislikes of specific foods.



Small Class Sizes

Students are integrated into existing classes that have an average of 14 students, and a maximum of 18 students. They are given an online placement test prior to the start of the course, to ensure that students are in a class with others of similar proficiency.

Highly Qualified and Experienced Teachers

All permanent teachers have university degrees and specialised qualifications in teaching English to Speakers of Other Languages.

Modern Teaching Methods

The communicative method of teaching is used. Skills are taught in an integrated way, using the students' living and learning environments while in Dunedin. The students are encouraged to use English as part of their daily life. Lessons are learner-centred and students are expected to participate in the class by:

- Speaking English in the classroom
- Asking and answering questions
- Giving opinions and comments

- Working in pairs and groups
- Taking part in discussions and conversations
- Listening to guest speakers who are native English speakers.

Materials and resources employed reflect language-use within a New Zealand context. Classroom activities are selected to provide maximum opportunity for students to practise and use English.

The focus is on developing fluency and accuracy in the use of English.

2. The Programme

The University of Otago English Language Centre provides the following programme:

Orientation

Our Orientation Programme is designed to support students' academic and non-academic transition to study and life in New Zealand, and includes the following:

- Important information about studying at the University of Otago and ELC, including academic and student support services, medical and insurance information, and where students can go for assistance for specific issues during their stay in New Zealand
- Academic procedures and expectations at ELC
- Homestay life and daily living in New Zealand
- Familiarisation with the University campus and Dunedin, including campus/city tours

Academic Programme

Curriculum

Students are integrated into classes with students from other cultures:

- Tuition from Monday to Friday, 4 or 5 hours per day plus individual study and homework
- 23 hours per week of direct teaching time for the number of weeks required;
- Individual study in the Independent Learning Centre (recommended 2 hours per week)
- Homework set by the teacher (usually 5 hours per week)

Students at the Elementary and Pre-intermediate levels have General English for 23 hours per week.

For other students at higher levels (the Intermediate level and above) there will be 15 hours of General English and 8 hours New Zealand Studies.

General English

General English is taught as integrated skills: reading, writing, listening, speaking, grammar and vocabulary. Each level has a set of proficiency statements and objectives, which are based on the Common European Framework:

(http://www.coe.int/t/dg4/linguistic/Source/Framework_EN.pdf).

Students are assessed against these objectives for their formal academic reports.

New Zealand Studies

This supplements the General English programme by providing further English-language study with a focus on New Zealand topics including history, geography, wildlife and Tikanga Māori (Māori culture).

Independent Study

Students will work in the Independent Learning Centre at a time of their choice. This facility is run by a trained teacher and has excellent resources. Students will work on their area of special need.

Homework

Regular homework will be assigned including:

- Journal writing
- Vocabulary learning
- Interviewing the host family or other native speakers
- Practising skills learnt in class.

Sample Timetable レベル別クラスによって時間割が異なります

	MONDAY	TUESDAY	WEDNESDAY	THURSDAY	FRIDAY	
9:00am	General English	General English	General English			
10:00am				General English	General English	
11:00am						
12:00pm	LUNCH BREAK					
1:00pm	NZ Studies	EIC	NZ Studies	LUNCH BREAK		
2:00pm		Individual study time in the ILC		NZ Studies	NZ Studies	NZ Studies
3:00pm	Individual study time in the ILC		Individual study time in the ILC			
4:00pm						

Audit of University Classes

Students will have the opportunity to audit (observe) University classes. To get the most benefit out of the programme students would need to be at a level of at least 5.0 IELTS or 500 TOEFL.

Process

Students will indicate their particular area of interest. For example: Law, Sciences, Mathematics, Humanities, Commerce and Information Technology.

The UOELC will gain the appropriate permissions for students to attend classes and/or lectures and give the students a timetable of possible times they can audit.

Students will make their own decisions about which University lectures they attend, within the timetable provided, and the frequency of audits.

Students will make arrangements with the audit programme supervisor about which classes they audit, and they will be expected to attend the classes as arranged.

If the audits of any classes or lectures occur in times when students have English language tuition, they may be excused from their English language classes with the approval of their teacher.

Certificate

A certificate of attendance will be presented to each student at a function at the end of the course.

Course Evaluation

At the end of the course, students will be asked to complete short evaluations in order to provide valuable feedback for teachers and course planners.

Out-of-class Activities and Excursions (optional)

The Student Support team arranges on-campus activities and other events on Friday afternoons, and students are welcome to join these throughout the programme.

On-campus activities are free to join, and where there is an off-campus event arranged, there may be a small fee for transport/entry costs.

Examples of Out-of-Class Activities and Events

- Games and sports
- Cultural activities such as art gallery or local museum tours
- Visits to local beaches and parks

A number of optional weekend excursions may also be available throughout the programme for students to join at an additional cost. Students will be given information about weekend excursion dates and costs on arrival at ELC.

Examples of Weekend Excursions and Activities

Note: Examples are indicative of possible excursions only. Not all excursions will be offered in a single semester/programme.



Taieri Gorge Railway Train Trip

Travel by historic train through scenic farmland, steep gorges and hills on this four-hour excursion with various stops along the way. The trip is reminiscent of the days of steam trains.



Larnach Castle

Visit New Zealand's only castle built in 1871 situated on the picturesque Otago Peninsula. Enjoy the spectacular views from the tower, the beautiful gardens and soak up the history of the castle on a guided tour.



Otago Peninsula Trip

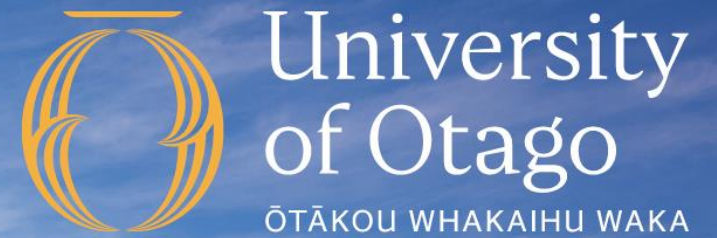
Take a bus trip down the Otago Peninsula, which includes an opportunity to view yellow-eyed penguins, seals and the Royal Albatross. The trip also includes a two-hour boat ride on the harbour.



Queenstown Weekend (conditions apply)

Visit Queenstown, the adventure capital of New Zealand, situated on beautiful Lake Wakatipu. Ride the Skyline Gondola for breath-taking views of Queenstown and to experience “lugging”, a thrilling, gravity fuelled downhill cart ride. Trip includes transportation and accommodation in Queenstown.

ダニーデン、オタゴ大学、English Language Centreの一般情報です。ご参考までにご観覧ください。



NEW ZEALAND'S FIRST UNIVERSITY

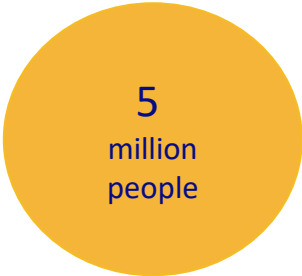
English Language Centre | Te Puna o te Kī



SECTION 1: NEW ZEALAND AND DUNEDIN



Aotearoa / New Zealand



Population



English, Te Reo Māori & NZ Sign Language



Global rankings

- 3rd least corrupt in the world (Transparency International 2023)
- 4th safest country in the world (Global Peace Index 2023)
- 4th most gender-equal country in the world (2022 World Economic Forum Global Gender Gap Report)
- 10th most prosperous country in the world (2023 Global Prosperity Ranking)
- 11th happiest country in the world (World Happiness Report 2024)

Dunedin, New Zealand



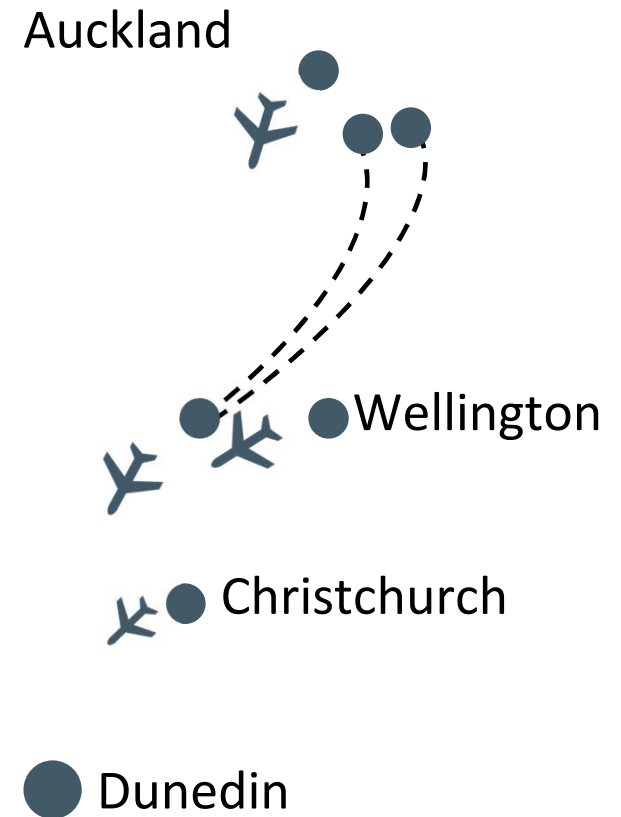
Travelling to Dunedin



Auckland	1hr 45min
Wellington	1hr 10min
Christchurch	55min



Queenstown	4 hours
Wanaka	3.5 hours
Milford Sound	5 hours



Why Dunedin?

- Student city
Population of 131,000 and 25,000 of those are students.
- We love it here
84% of people here rate their quality of life as good or extremely good.
- Learn from the brightest
Dunedin has NZ's highest concentration of postgraduate qualifications - over 36% of people here have postgraduate education.
- Affordable
Lower cost of living as compared to big cities (up to 25%)
- A great lifestyle
Nature, Culture, Sport, Fashion & Food Scene

www.dunedinnz.com/study





Dunedin in Spring



Dunedin in Summer







Dunedin in Winter

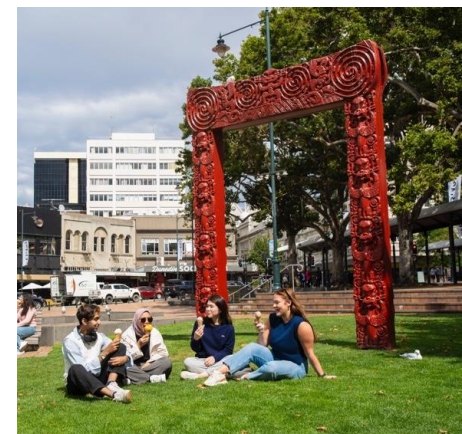
Student City

- ❖ A leader in learning for 150 years, Dunedin is famous for its student culture and friendliness.
- ❖ Dunedin is a compact, student city which offers unique learning experiences – inside and outside the classroom.

Explore Ōtepoti Dunedin

NO OTHER CITY in the country offers the same opportunities to get out and explore. Dunedin is surrounded by fantastic beaches, hills and harbour waters that offer opportunities for a range of activities, from surfing and kayaking to mountain biking and paddleboarding, most within a 10 minute commute.







Gateway to adventure



From skiing...

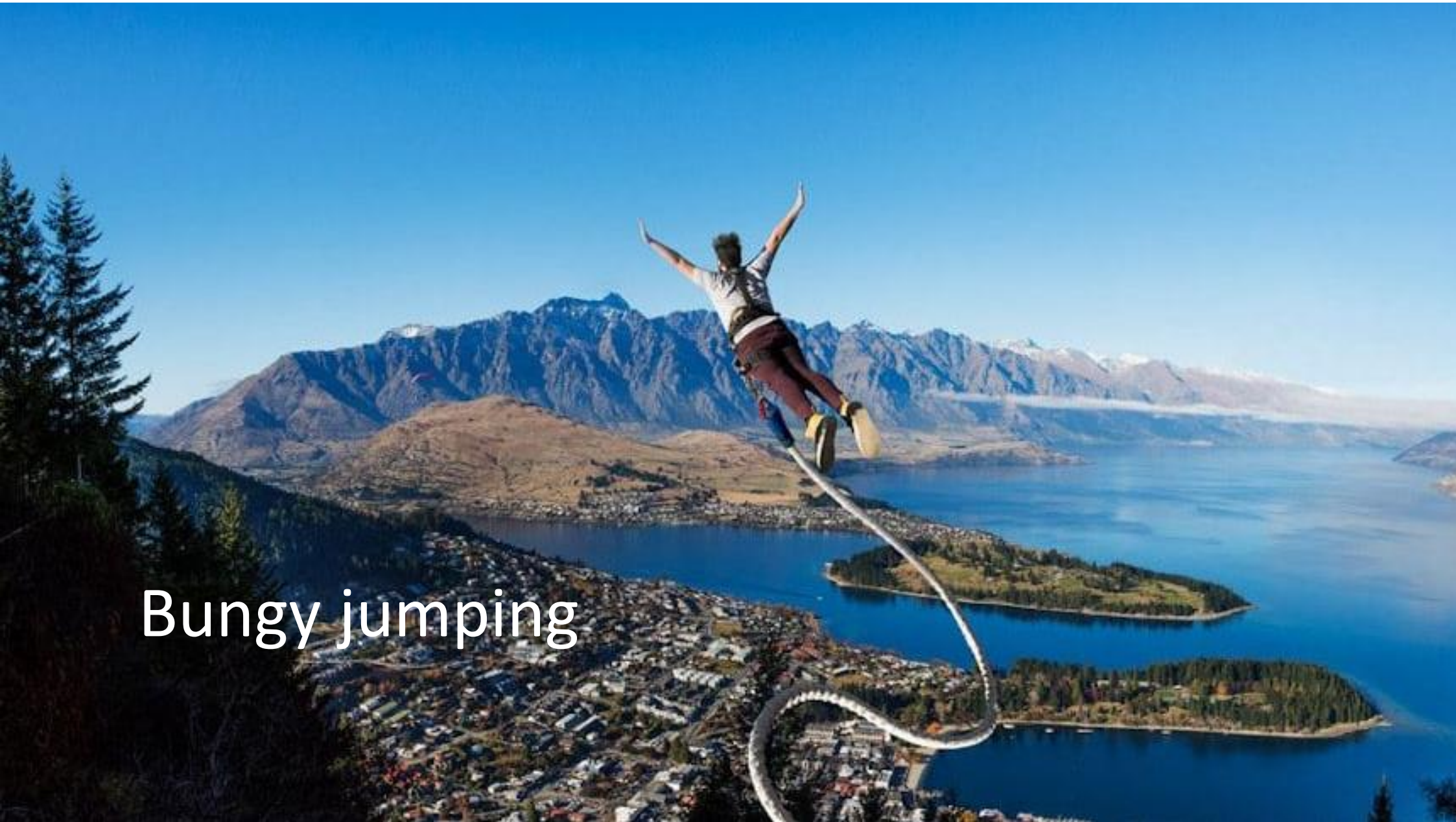


...to kayaking



Great Walks of NZ

Bungy jumping



Mountain hiking



A yellow-eyed penguin is walking on a sandy beach. The penguin has a white body, black wings, and a distinctive yellow patch around its eye. Its feet are red. A trail of footprints is visible in the sand behind it, leading towards the background. The text "only 3-4-hour drive to a variety of recreational activities" is overlaid on the right side of the image.

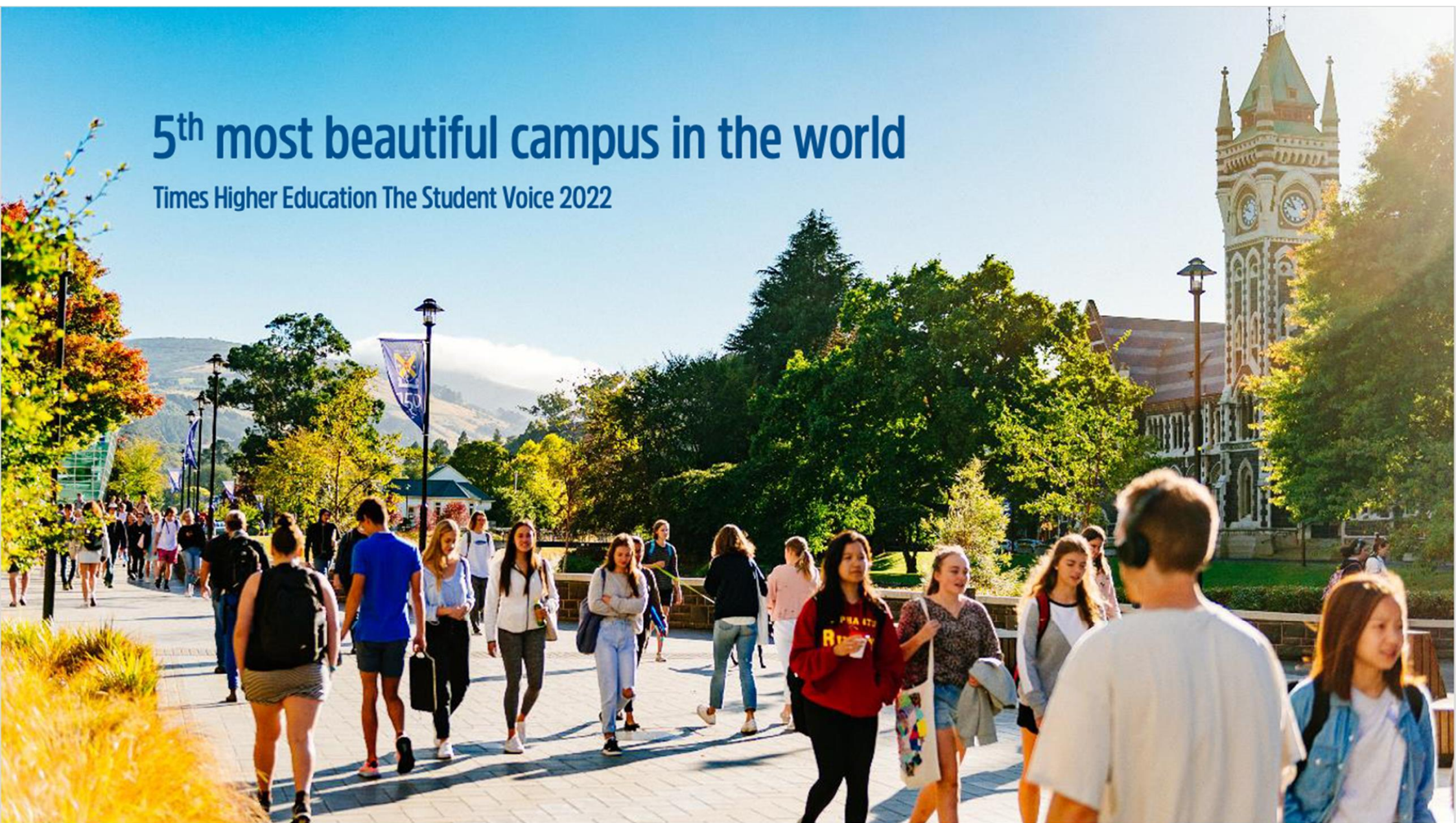
only 3-4-hour drive
to a variety of recreational
activities



SECTION 2: WHY OTAGO

5th most beautiful campus in the world

Times Higher Education The Student Voice 2022



Why Otago?

1st

New Zealand's first university. Established in 1869

1%

Ranked in the top 1% of universities worldwide



Be taught by Otago and National Award-winning lecturers. For the 7th time in 11 years, the University of Otago has won NZ's top tertiary teaching award.



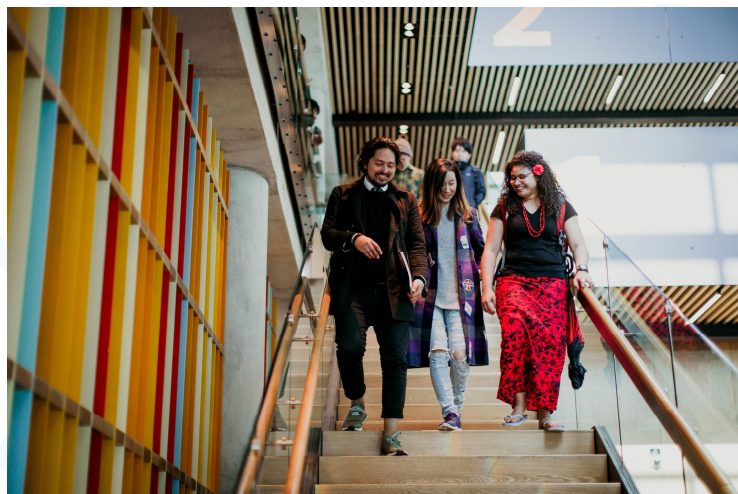
NZ's top university for educational performance (TEC Indicators)



1869

University of Otago Pathway & English Language Centre





Why the English Language Centre?

- ❖ Located on the University of Otago campus
- ❖ Small class sizes - maximum 18 students
- ❖ All permanent academic staff members have university degrees, post-graduate teaching qualifications and/or TESOL Qualifications
- ❖ Registered test centre for IELTS and OET
- ❖ Accommodation – Homestay service
- ❖ Welcoming, English-speaking environment - immerse yourself with local students and culture!

Pathway and English
Language Centre (PELC)
run an activities
programme throughout
the year which involves
some local and further
field trips.

PATHWAY AND LANGUAGE CENTRE
NEWSLETTER

March 2024
Edition #30

CONNECT
Be Active, Keep Learning, Give, Take Notice
ME WHAKAWHANAUNGA



QUEENSTOWN TRIP

A group of adventurous Dunedin English-language taura embarked on an unforgettable journey to the stunning destination of Queenstown. Packed with excitement and adrenaline-pumping activities, this once in a lifetime trip was an experience to remember.



With hearts racing and spirits high, our group of 38 students embraced the thrill of Queenstown's renowned adventure sports. From skydiving to bungee jumping, Jet Boating and luge, to enjoying the ice-bar and exploring, every moment was filled with exhilaration and wonder.



>>> SKYDIVING

The most highly-rated event of the trip was undoubtedly skydiving. Students soared through the air, taking in breathtaking views of Queenstown's majestic landscapes far below. The rush of adrenaline as they soared through the air was unforgettable. Students described the experience as one of the most incredible things they had ever experienced.

>>> JET BOATING

For those seeking an extra dose of adventure, Jet boating provided the ultimate thrill. With courage and determination, students took a speedy ride in one of the fastest jet boats in New Zealand into an unforgettable turbo-fuelled ride.





>>> ICE-BAR

On a balmy summer evening, our taura explored some of Queenstown's nightlife with a visit to the famous Ice Bar, donning thick polar gear to drink and experience this winter wonderland where everything is made out of ice!



For this group of English language students, the trip to Queenstown was more than just a getaway—it was a journey of self-discovery, courage, and unforgettable experiences. Bonds were strengthened, memories were made, and friendships were forged amidst the breathtaking scenery of Queenstown.

The trip to Queenstown was not only a testament to our student's spirit of adventure but also a celebration of the vibrant multicultural community at the University of Otago Pathway and English Language Centre.



OTAGO PENINSULA WILDLIFE TOUR



4 HOUR TOUR

TRANSPORT AND
COMMENTARY
PROVIDED

1PM DEPARTURE
FROM OTAGO
BUSINESS SCHOOL

\$140 per student
(includes 20% discount)



NEW ZEALAND FUR SEAL



SIGN UP
AT
STUDENT
SUPPORT

Places limited to 10 students. Sign up and pay today!

clearwaterwildlifetours.co.nz

If you are a Nature-lover, the Pathway and English Language Centre also arrange a wildlife tour out in the Otago Peninsula!



7 University Libraries - specialised librarians can help you!





Student Health right on the campus

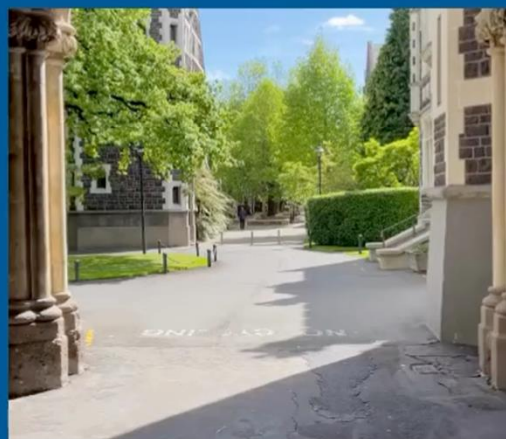




Campus Watch
Available 24/7. Friendly staff



Life on campus





Voted best for overall student experience at a NZ university for the past 5 years



Student Services

- ❖ AskOtago – central help service for all questions!
- ❖ International Student Support (Pastoral Care) & Visa & Insurance team
- ❖ Otago University Students Association (OUSA) and Otago University International Students Association (OISA)
- ❖ Social Impact Studio – University Volunteer Centre
- ❖ Chaplains/ Muslim staff member/ Mosque/ Halal meals
- ❖ Campus Watch



Unipol & Sports Facilities

Right on the campus, free for students

Virtual tour



Clubs & Societies



150 student-led
clubs and
societies



Free room bookings (Music
room, Studio/ Dance room
etc)



Free breakfasts
& \$4 lunches
everyday



Amenities like
showers &
saunas

Clubs & Socs ousa



OTAGO INTERNATIONAL

Otago is involved

- Social Impact Studio
- UniCrew Volunteers
- Leadership Award
- Global Citizenship
- and more...



What to bring?

Yourself!

A variety of Clothing

Your laptop

A good Camera / phone



Thank you!

paul.baker@otago.ac.nz

