

A photograph of the Campanile (bell tower) of Trinity College Dublin, featuring a large dome and arched windows, set against a blue sky with light clouds. The tower is made of light-colored stone and has statues on its base.

Global Mobility

Update 2025/26



Trinity College Dublin
Coláiste na Tríonóide, Baile Átha Cliath
The University of Dublin

Table of Contents

Key Updates	03
Academic Year Structure	04
Why Trinity?	05
How to Apply	06
Areas of Study	07
Resources	08
Contact Us	12

Message from the Associate Director

Trinity is a globally engaged university, we are committed to educating the next generation of global citizens and global leaders. Working with you, as one of our global partners, is one of the many ways we strive to provide a global experience for all our students. We look forward to engaging with you and your students throughout the coming academic year.



Niamh Burke
Associate Director
Partnerships and Global Mobility

Key Updates

A reminder that our GPA requirement for incoming exchange students has been changed from 3.3 to 3.1. Please note that individual areas of study may have different requirements e.g. Economics and Philosophy require a 3.5 GPA and Political Science specify a 3.3.

Trinity's student exchange partner universities that offer three-year degree programmes can now nominate students to join Trinity's exchange programme for the second year of studies.

Trinity continues to provide an additional option for incoming exchange students for 2025/26 to prove English language proficiency (where relevant) using Duolingo. Students must attain a minimum overall score of 120 overall (100 in each subscore). Details of IELTS, TOEFL iBT, PTE and Cambridge test scores are available at: www.tcd.ie/study/english-language-requirements.

Incoming applications will continue to be processed by the Academic Registry NonEU Admissions Team (noneu.incoming@tcd.ie).



Academic Year Structure 2025/26

Semester 1

Semester Start Up Programme
25th August - 12th September 2025

Orientation Dates
8th - 12th September

Teaching Begins
15th September

Reading Week (no classes)
27th - 31st October

Exam Period
11th - 22nd December (inclusive)

Semester 2

Semester Start Up Programme
12th - 16th January 2026

Orientation Dates
Dates TBC

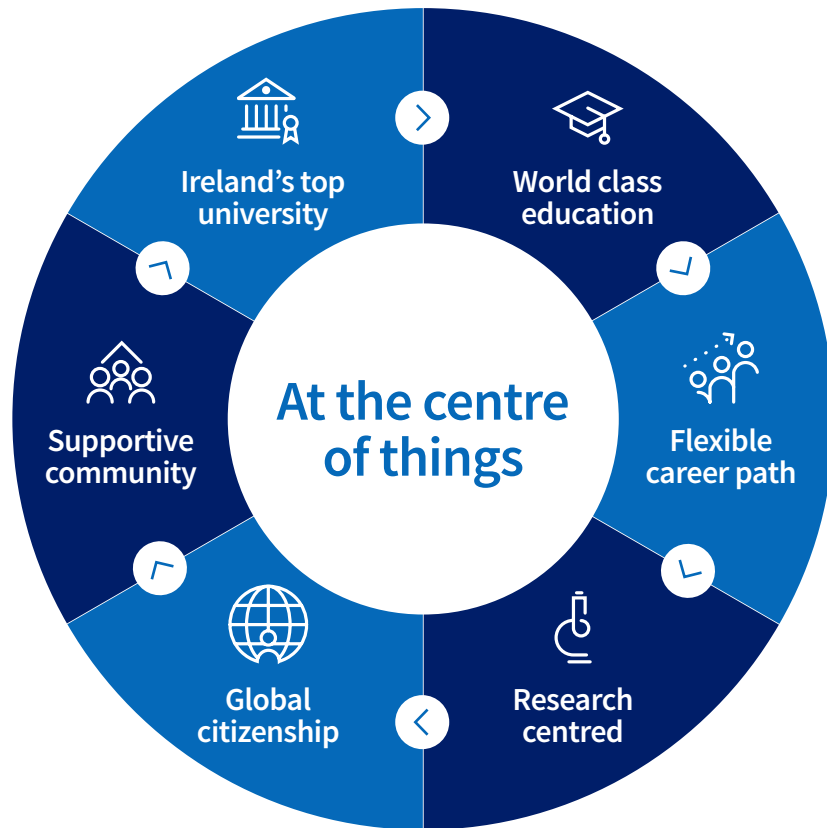
Teaching Begins
19th January

Reading Week (no classes)
2nd - 6th March

Exam Period
21st April - 2nd May (inclusive)



Why Choose Trinity?



1st

Ireland's leading university

(QS World University Ranking 2026)

2nd

Ireland is the 2nd most peaceful country in the world

(Global Peace Index 2025)

35th

35th most international university in the world

(Times Higher Education Ranking 2025)

36%

36% of our student body is from outside Ireland, from 125 countries

75th

Ranked 75th in the world

(QS World University Rankings 2026)

91st

91st in the world for graduate employability

(QS Graduate Employability Rankings 2022)

How to Apply

GPA	<p>3.1 cumulative</p> <p>*Please note that very few individual areas of study may have different requirements. e.g. Economics and Philosophy require a 3.5 GPA, Political Science specify a 3.3.</p>
How to Apply	<p>Apply through our online application system: www.tcd.ie/global/mobility/inbound/how-to-apply/non-eu-exchange</p>
Deadline to Apply for Admission	<p>Applications are assessed on a rolling basis with the following application deadlines:</p> <ul style="list-style-type: none"> — Semester 2, 2026 Application: 1st August - 15th October — Full Year and Semester 2026/27 Application: 20th January - 15th April
Contacts for Applications to Trinity	<p>NonEU Admissions Team, Academic Registry noneu.incoming@tcd.ie</p>
Contact for Exchange Applications Inbound to Trinity	<p>International Exchange global.mobility@tcd.ie</p>
Application Process for Exchange Students	<p>Applicants are required to have the following when applying:</p> <ul style="list-style-type: none"> — 3.1* GPA on official transcript — An academic reference on headed paper, with signature — A personal statement — Exact modules listed in chosen disciplines — Please note that students interested in studying languages may be asked to provide proof of language level to be placed in the appropriate level of modules.
Nominations Process for Partners	<p>If a university wishes to nominate students, they can use the nomination form which will be issued each semester for completion. Any queries relating to nominations can be emailed to noneu.incoming@tcd.ie.</p> <p>A nomination does not act as an application and the students applying must still complete the online application through the Trinity online application system: www.tcd.ie/global/mobility/inbound/how-to-apply/non-eu-exchange.</p>

Areas of Study

Faculty of Science, Technology, Engineering and Mathematics

- Biochemistry and Immunology
- Biology
- Botany
- Chemistry
- Computer Science and Statistics
- Engineering: General Engineering,
- Mechanical Engineering,
- Civil Engineering*, Electronic
- Engineering*, Biomedical
- Engineering
- Environmental Sciences
- General Science
- Genetics
- Geography
- Geology
- Mathematics
- Microbiology
- Natural Sciences
- Physics: Astrophysics, General
- Physics, Theoretical Physics
- Zoology

Faculty of Arts, Humanities and Social Sciences

- Business
- Classics
- Economics
- Education
- English*
- European Studies (Hilary term only)
- French
- Gender and Women's Studies
- Germanic Studies
- Hispanic Studies
- History*
- History of Art and Architecture
- Irish and Celtic Languages
- Italian
- Law*
- Linguistic, Speech and
- Communications Science
- Music
- Near and Middle Eastern Studies
- Philosophy*
- Political Science*
- Psychology*
- Religions and Theology
- Russian and Slavonic Studies
- Social Work and Social Policy
- Sociology

Faculty of Health Sciences

- Nursing and Midwifery
(Please note that while Trinity welcomes pre-med study abroad students, study abroad students cannot enrol in modules in the School of Medicine)

The Lir

- Modules at The Lir
National Academy of Dramatic Art are now available to exchange students, but students cannot cross-register in other Schools/ Departments if taking modules at the Lir due to scheduling.

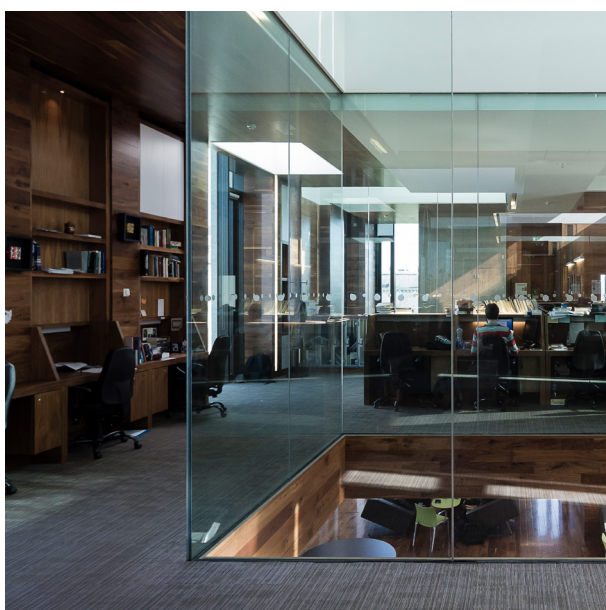
Schools and Departments noted with an asterisk () are particularly in demand, so early applications are recommended.

Credit — European Credit Transfer System (ECTS)

Students typically take 30 ECTS per semester at Trinity. ECTS (European Credit Transfer and Accumulation System) is a credit weighting, so the number of modules (classes) a student takes at Trinity varies on the credit values for each of their modules, which usually have a 5, 10 or 15 ECTS value. Students must take a minimum of 20 ECTS in a semester and 45 ECTS for the academic year. Students are encouraged to also check in with their home universities for credit load requirements.

Academic Supports

Students have access to academic supports across Trinity, and will receive advice from the Global Mobility team during orientation to introduce them to the supports available. Student Learning and Development is also available to help with any academic concerns. They can be emailed on student.learning@tcd.ie. Any queries or concerns can also be redirected to the Global Mobility Team.



Immigration and Visa Information



Visa Application

Students from some non-EU/EEA/Swiss/UK countries may require a visa to enter Ireland. Lists of visa-required countries and further information on visa application procedures are available here: www.tcd.ie/study/international/arriving-in-ireland/visa-immigration.

Students can also check if they need a visa here: www.irishimmigration.ie/coming-to-study-in-ireland/study-in-ireland-travel-path.

Immigration Service Delivery (ISD) Information

All students who do NOT hold an EU/EEA/Swiss/UK passport (regardless of whether a visa is required or not) must register with the Immigration Service Delivery (ISD) after arrival in Ireland. Further information on the requirements to register can be found at the ISD website: www.irishimmigration.ie/registering-your-immigration-permission/how-to-register-your-immigration-permission-for-the-first-time. Students with EU/EEA/Swiss/UK passports must enter on their EU/EEA/Swiss/UK passport in order to avoid non-EU entry processes. Immigration information is provided to students during orientation, and additional immigration advising is available through the Trinity Global Room at: tcdglobalroom@tcd.ie.

Accommodation

In 2026/27, Trinity will have a portfolio of accommodation through referral agreements with 3rd party private student accommodation providers. We are not in a position to guarantee housing to all incoming visiting students at the moment but are working on increasing our offerings. Students are asked to get in touch early if they require housing and follow instructions given promptly. Accommodation types will vary depending on the site/location but will be modern student accommodation ideal for study abroad students. These locations provide top of the range student accommodation in Dublin city within walking and short commuting distance of Trinity. Further information on accommodation options is sent to all applicants after each application deadline from global.mobility@tcd.ie.



Student Life

Clubs and Societies

Trinity has over 168 clubs and societies. Find out how to get involved at the following link: www.tcd.ie/students/clubs-societies.

Student Services

- Academic Registry: www.tcd.ie/academicregistry/contact
- Disability Service: www.tcd.ie/disability
- Equality Office: www.tcd.ie/equality
- Health Service: www.tcd.ie/collegehealth
- Sports Centre: www.tcd.ie/sport
- Student Counselling: www.tcd.ie/student_counselling
- Students' Union: www.tcdsu.org

Trinity Global Room

The Trinity Global Room team provides guidance and support to international students on a wide range of issues including immigration, accommodation and all aspects of life at Trinity www.instagram.com/tcdglobalroom

www.tcd.ie/study/international/student-experience/global-room.

For more information, please contact: tcdglobalroom@tcd.ie.

Orientation

Trinity offers an orientation programme for all inbound study abroad and exchange students. More information can be found at: www.tcd.ie/students/orientation/visiting-exchange.

Semester Start-Up Programme

The Semester Start-Up Programme (SSP) is an optional pre-orientation programme that offers an immersive orientation to Trinity, Dublin and Ireland. It is taught by the School of Histories and Humanities and more information, costs and duration can be found here: www.histories-humanities.tcd.ie/visiting/understandingireland/semester-start-up. Students can enrol by checking Yes next to 'SSP' on their application.



Additional Materials

Additional information can be found at the following links:

The Global Mobility Guide and **How to Apply Guide**, along with the link to apply, can be found here: www.tcd.ie/global/mobility/inbound.

Pre-Arrival materials including the **Welcome to Trinity** and the **Global Mobility Pre-Arrival Guide** can be found here: www.tcd.ie/global/mobility/inbound.



Costs and Insurance

Estimated Living Costs

Certain costs will vary depending on a single semester or full year exchange but examples provided are based on a full year.

- **Housing:** Approximately €8,000–€11,000 for full academic year
- **Utilities:** €1,000–€2,000
- **Meals:** €3,000–€5,000
- **Miscellaneous:** €2,500
- **Commuting:** €1,000
- **Health Insurance:** €550 (required for non-EU students)
- **Immigration registration:** €300 (all non-EU passport holders. Additional entry visa costs may apply)
- **Personal Spending:** €2,000–€3,000
- **Airfares:** €2,000
- **Total:** €20,350–€27,350 Approx

Insurance

Students arriving from outside of the EU should contact their health insurance provider to determine if they are covered while studying abroad and if not, they will need either to arrange health insurance prior to departure or purchase insurance locally in Ireland. Private health insurance cover is mandatory for non-EU students in order to register with the Immigration Service Delivery (ISD). Students often use university or study abroad plans recommended by the home university, but must confirm that their plan meets immigration requirements.

Information about Irish health insurance plans can be found here: www.tcd.ie/study/international/arriving-in-ireland/health-insurance. You can find the ISD insurance guidelines at the following link: www.irishimmigration.ie/coming-to-study-in-ireland/what-are-my-study-options/a-fee-paying-private-primary-or-secondary-school.

Student Travel

For discounted rates on student travel, students should purchase a Student Travel Card www.leapcard.ie.



Contact Us

Heather Hodges

GLOBAL MOBILITY MANAGER
hhodges@tcd.ie

Heather oversees Global Mobility and International Exchange programmes. General queries relating to our inbound study abroad (fee paying visiting students) and exchange student programmes can be emailed to the Global Mobility team on global.mobility@tcd.ie.

Zhilong Wang

IMMIGRATION SUPPORT OFFICER
zhilong.wang@tcd.ie

Zhilong is the point of contact for any queries relating to immigration requirements for international students. Zhilong can be reached on zhilong.wang@tcd.ie.

Wanjiku Wainaina

GLOBAL MOBILITY OFFICER — INBOUND

Wanjiku supports inbound visiting students (nonEU exchange, fee-paying / study abroad and Erasmus+), and university partners and study abroad providers.

Global Mobility Inquiries

global.mobility@tcd.ie

Academic Registry

Our colleagues in Admissions process all inbound applications. For queries relating to nominations or applications, please email noneu.incoming@tcd.ie.

Global Mobility

For queries related to international exchange and study abroad, please email global.mobility@tcd.ie.

Find us at TCD Global on the following channels:



@tcdglobal
@trinitycollegedublin



@tcdglobal
@tcdublin



@tcdglobal
@trinitycollegedublin



@studyattrinity
@trinitycollegedublin