

# PROGRAM INFORMATION -Face to Face-

as of 2026/4/9

※本プログラムに参加するためには、7月10日(金)19:00~20:30(オンライン予定)のオリエンテーションへの出席が必須です。出席できない場合は、プログラムに参加することはできません。本学の授業と時間が重なる場合に限り、代替措置を講じます。Attendance at the orientation session scheduled for Friday, July 10, from 19:00 to 20:30 (online) is mandatory for participation in this program. Students who are unable to attend will not be able to join the program. Alternative arrangements will be made only if the orientation time conflicts with UTokyo classes.

**\*Program details may be subject to alteration**

University name		<b>The University of Sheffield</b>
Program date and time  *Please send the timetable at your earliest convenience.	From	Monday 3 August 2026
	To	Friday 28 August 2026
	Recommended arrival date	Sunday 2 August 2026
	Recommended departure date	Saturday 29 Saturday 2026
Program contents/outline	<p>In the morning General English development course is designed to improve students' English Language skills and students are integrated into classes with students from around the world. The morning courses includes tuition and language practice in the following areas:</p> <p>Writing: helping you to improve the accuracy and structure of your written work          Speaking and Pronunciation: improving the accuracy and fluency in a variety of situations          Listening: understanding spoken English in academic and general situations          Reading: developing the ability to deal with longer and more complex texts          Grammar: consolidation of the main tenses and structures of English          Vocabulary: learning more words in a variety of different contexts</p> <p><b>On Wednesday afternoons, the students will required to take part in a general academic lecture programme and on Monday, Tuesday and Thursday afternoons, students will have specifically-designed lectures on a range of topics with a follow-up discussion session facilitated by English-speaking staff and students from the University to help them with their speaking around topics of interest.</b></p> <p>During the course students will also receive regular short 1 to 1 tutorials with an ELTC tutor. These tutorials are similar to a private lesson and students can choose which areas of English you would like to focus on each week. Outside class times, there will be options for free social programmes and educational trips and visits (Additional fees apply £15-20).</p> <p>・アカデミックレクチャーがあることは、このプログラムの特色です。東大生だけで集まって講義を聴くことや、自分の専門分野以外の講義に興味がない場合は、英語学習のみを提供している他のプログラムへの応募をご検討ください。</p> <p>・本学学生が集団で参加するプログラムで、参加学生は主に本学学生及び他大学の日本人学生となります。</p>	

<b>Eligibility and Requirements</b>	<b>English proficiency (e.g. TOEIC, TOEFL, IELTS scores, etc.)</b>	Formal language certificate not required but it is advisable for students to have at least pre-intermediate level, eg. a minimum of IELTS 3.5/4.0 overall or TOEIC 500+ overall
	<b>Undergraduate/Postgraduate</b>	UG and PG
	<b>Nationality</b>	Any
	<b>Pre and post Assignment (if any)</b>	N/A
	<b>Necessary documents (e.g. a copy of passport/student ID card, etc.)</b>	Online application form to be completed by each student, passports to be sent as PDF document
	<b>Others (majors, background, etc.)</b>	Any
<b>Program fees per student</b>	<p>Approximately £2,616</p> <p>Tuition fees: £1,836 per person (includes all study materials) + Accommodation fees: £752 (TBC) + Airport transfer service £25.84 (TBC) + Course Completion Celebration £2~3 (TBC)</p> <p>TBC: It will be confirmed once the final number of students is confirmed</p> <p>In addition to the total amount, optional Saturday trips cost £15–20 per trip if you choose to participate.</p>	
<b>Number of Students who will be accepted</b>	Minimum: 1	
	Maximum: 45	
<b>Accommodation in detail</b>	<p>Total accommodation fees: £752</p> <p>-Room rate: about £25.20 per night per student (at St. Vincent's Place)</p> <p>-Bedding pack: £45</p> <p>-Kitchen packs: about £26.55 (TBC)</p>	
<b>Application procedures</b> (学内選考通過後の手続き)	<ol style="list-style-type: none"> <li>1. Students complete the Group Application Form via a shared link then send us a copy of their passport.</li> <li>2. Students complete the online placement test by 26th July. Date and time to be confirmed. Online placement log in details will be shared nearer the time.</li> <li>3. Students to complete Preregistration process before arrival, or else on their first day in Sheffield as part of orientation.</li> </ol>	
<b>Payment procedure in detail (if any)</b>	<p>Students will make three payments through different systems.</p> <p>-Tuition fees are paid within the registration system.</p> <p>-Uni accommodation fees are paid in the accommodation application portal.</p> <p>-Airport transfer fees are paid via the University online store link.</p>	

<b>Deadline for prospective participants to complete the application</b>	2026/7/3 ※学内選考の応募締切は5/29(金)正午です。上記は学内選考を通過した場合の派遣先大学への申請手続き締め切り日ですのでご注意ください。
<b>Payment due</b>	2026/7/17
<b>Cancel policy</b>	<p><b>Cancellation before the course start date:</b> 100% of fees will be refunded, minus any charges incurred. ELTC will not be responsible for cancellation terms and conditions for any other aspects such as University accommodation or private sector accommodation - these will have their own cancellation policies.</p> <p><b>Withdrawal after the course start date:</b> Fees are not normally refundable for short courses after they have started. In exceptional circumstances such as bereavement or serious illness the fees, minus any charges incurred, may be waived at the discretion of the Director of ELTC.</p> <p><b>Insurance:</b> The sending organisation is advised to ensure the group has suitable travel/health/cancellation etc insurance to cover all necessary contingencies</p>
<b>Letter of acceptance</b>	will be issued.
<b>Progress report or transcript</b>	will be issued at the end of programme
<b>Certificate</b>	will be issued at the end of programme
<b>Credits</b>	N/A
<b>Other participants from different universities</b>	Yes - Students will be integrated with other ELTC students in the mornings, but will have closed lectures 3 afternoons per week (Monday, Tuesday, Thursday). On Wednesday afternoon, there will be a lecture for all students which may take place online.
<b>Airport transfer services</b>	<p><b>Manchester Airport</b> Pick up only- Date: 2026/8/2 (Sun) Time:TBD There is no doppel service to the airport ※募集要項「6. 航空券について」要確認</p>



## University of Tokyo Short Stay University English Summer Programme Course Outline 2025-2026

### Course Dates

Monday 03 August 2025 to Friday 28 August 2026

### Course Aims

On arrival students will take our online English Placement Test: 45 minutes online test and a 5 minute Speaking test. This will be used to place them in a class at the appropriate level (from A2 to C1).

The programme is designed to offer the chance to experience life in a different country, study at a leading British university and develop English language, academic skills and attend the Special Lecture Programme in areas of the students and professors' interests. Participants will take English language classes with students from different countries on our University English programme (UE).

---

### University English Course Content

On arrival students will take our online English Placement Test: 45 minutes online test and a 5 minute Speaking test. This will be used to place them in a class at the appropriate level (from A2 to C1).

In the English Language classes participants will mix with students from other nationalities and be placed in a class according to their level of English. However, as student numbers, English level, nationality and gender of students cannot be predicted, we cannot guarantee a “perfect mix” of students. We group our classes principally by level of English, not by nationality.

The table below shows the outline timetable of the programme.

Time	Mon	Tue	Wed	Thur	Fri
09:30 – 11:00	Integrated Language Skills	Integrated Language Skills	Integrated Language Skills	Integrated Language Skills	Integrated Language Skills

11:30 – 13:00	Integrated Language Skills	Integrated Language Skills	Integrated Language Skills	Integrated Language Skills	Integrated Language Skills
14:00 – 15:30	Today Lecture	Today Lecture	Lecture - General Topics (14.00 – 15.00)	Today Lecture	Self-study
15:30 – 16:30	Social Activities	Social Activities	Social Activities	Free Time	Free Time
16:00 – 18:00	Free Time	Free Time	Free Time	Social Activities	Free Time

Total Study Hours = 21 per week (including 1 to 1 tutorial every two weeks)

The course is of an integrated design based on an up-to-date textbook with supporting interactive whiteboard materials and supplemented by a range of other activities and materials. Students will have plenty of opportunity to practise what they have learned through lively interactive tasks, pair and group work.

You will follow a special lecture series on Monday, Tuesday and Thursday afternoons. These are delivered by academic staff (lecturers/professors) from different university departments. These lectures incorporate both Science, Technology and Engineering (STEM) and Humanities, Arts and Social Science (HASS). After the lecture, there will be a post-lecture discussion. You will be joined by teachers and student ambassadors during these afternoons.

On Wednesday afternoons you will join your fellow University English students for the weekly online Culture lecture.

---

## Tutorials

One-to-one tutorials will be offered to all students on a regular basis. In these meetings the personal tutor will discuss the student's progress and any concerns the student may have about their work or life in Sheffield.

---

## Assessment

All students are tested on arrival-they will take our online placement test and have a 5-10 minute speaking test. This allows us to place students at the correct level.

The ELTC will provide a progress report on each of the participants at the end of the course and an overall grade assessment in the various skills developed throughout the course including a figure for percentage attendance.

---

## Saturday Visits Programme

ELTC has a well-established programme of visits to places of historical, social and cultural significance in England. These visits are educational and cultural in content and are accompanied by Student Ambassadors and the Social Programme Coordinator. Suggested trips can be to Manchester, York, Lincoln, Peak District National Park and historic castles. There is a small non-refundable booking fee for these visits.

---

## Social Programme

Students will have access to a wide range of social and cultural activities organised on a weekly basis by the ELTC and through the Students' Union. Our Students' Union has repeatedly won the WhatUni award for "Best Students' Union in the Country", most recently in 2023 for the 6th year in a row. Examples of the types of activities which may be on offer can include: a weekly reading group, a weekly conversation club, weekly football game, ice-skating, bowling and visits to cafes and restaurants etc. (some entrance charges to activities will be paid by the student, e.g. cinema)

---

## Accommodation

### University Accommodation:

Living in one of our [City Residences](#) puts you minutes away from the campus, and right in the beating heart of our beautiful northern city. Nearly 2,000 students from the UK and 150 countries enjoy Sheffield's warm welcome and unique personality.

Students live together in flats of four to eight flatmates. Each student has their own bedroom and en-suite bathroom. The room would come inclusive of a small double (3/4 bed), storage space, desk, desk chair, and En-suite which consists of a toilet, wash basin, and shower. Electrical appliances are not provided for the bedrooms but kettles and toasters are provided in the shared kitchen area.

Depending on availability, you will be placed in either St. Vincent's Place or Allen Court.

---

## The University of Sheffield

The University of Sheffield is one of the premier universities in the UK, a member of the elite "Russell Group". Founded in 1905, we have a strong tradition in research (6 Nobel Prize winners) and a reputation for teaching excellence.

We have nearly 30,000 students from around 140 countries, and over 8,000 staff. The University of Sheffield is a popular choice with applicants for university places, and once they arrive our students enjoy the experience so much that many settle in Sheffield after they graduate.

# The English Language Teaching Centre

The ELTC is housed in a purpose-built facility with 28 classrooms and 2 computer rooms. We are located near the central campus and city centre. All classrooms are equipped with interactive whiteboards and other audio-visual equipment. We have a staff of over 90 highly qualified teachers with experience teaching in many different countries.

---

## Sheffield

Sheffield is England's fourth-largest city, with the wealth of facilities you would expect to find in a major university city - yet it's compact, friendly and accessible. Sheffield has excellent rail links to all major cities. You can be in Leeds or Manchester by train in about an hour, and London in just over 2 hours.

We are a family- and student-friendly city with a relatively low cost of living. The area is bursting with culture and entertainment, including award-winning theatres, museums and galleries. Our nightlife is also legendary with a wealth of clubs and live music venues.

We have over 200 parks and woodlands and one third of the city is in the Peak District National Park. Crime statistics show it is also one of the UK's safest major cities.

---

## Contact Details

**Address:**

English Language Teaching Centre,  
78 Hoyle Street,  
Sheffield,  
S3 7LG

**Email:** [eltcstudytours@sheffield.ac.uk](mailto:eltcstudytours@sheffield.ac.uk)

**Telephone:** +44 (0)114 222 1780

**Web:** [www.sheffield.ac.uk/eltc](http://www.sheffield.ac.uk/eltc)

---

# Photographs



View more at <https://photos.app.goo.gl/48G2VvQ3bDUij3WTA>



**University of  
Sheffield**

English Language  
Teaching Centre

# **University Pre-arrival Presentation**

## **University English Programme**

### **March 2026**

# Presenting today

**Helen Johnstone**

*UE Programme Manager*



**Juliet Parfitt**

*Digital Learning Advisor*



**Cathay Chen**

*UE Programme Support Officer*



# Sheffield University

**When you study at ELTC you become a Student at Sheffield University and a member of the students' union.**



# About the course

## University English (UE)

- General English Language development Course
- Small groups (12-16 students)
- Mixed nationality groups
- Interactive classes-small group, pairwork, whole class activities



English Language Teaching Centre - Main Building

## The course aims to help you:

- **Improve** your general English communication skills
- **Practise** reading, writing, listening and speaking
- Become familiar with **British University life**
- Become a more **independent learner**
- Study **British culture**
- Grow in **confidence** using English

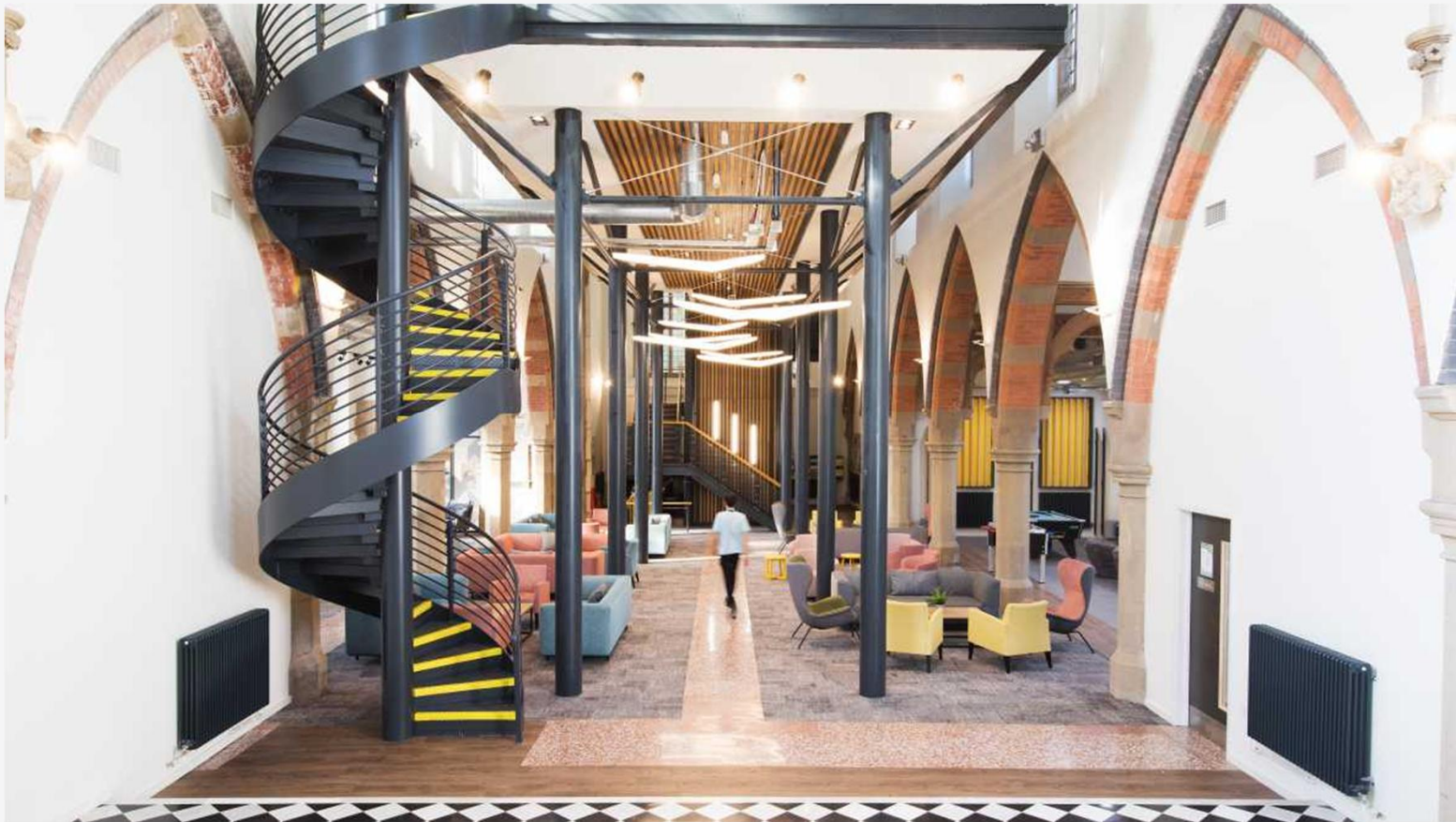
# About the course: Saturday visits

- Practice your English outside the classroom
- See places of cultural interest
- E.g. Chatsworth House, Lincoln, York



# Living in Sheffield

## St. Vincent's Place



## At a glance

- Own bedroom with en-suite bathroom
- Communal kitchen and living area
- Launderette on site
- Cinema room
- Common room and social space
- Study areas

## How many flats and residents?

- Students live together in flats of **four to nine** flatmates.
- Each student has their own bedroom and en-suite bathroom.
- There is also a communal kitchen/living area shared by flatmates.

# Room

The room would come inclusive of a small double (3/4 bed), storage space, desk, chair, and En-suite which consists of a toilet, wash basin, and shower.



# Communal Kitchen

Electrical appliances are not provided for the bedrooms but kettles and toasters are provided in the shared kitchen area.



# Location



10 minutes' walk to the ELTC  
and the main University of  
Sheffield campus

A short distance from  
Sheffield City Centre.



# Social Programme

- There will be social activities every day after classes.
- Activities include yoga, football, video games and conversation club.
- Every Friday you will receive an email about the social activities for the following week.

**Carlo Vidal**

Social Activities Coordinator

