



# UTokyo

THE UNIVERSITY OF TOKYO

東京大学



# Undergraduate Education

## Undergraduate Education

### Junior Division

College of Arts and Sciences ..... [http://www.c.u-tokyo.ac.jp/eng\\_site/index.html](http://www.c.u-tokyo.ac.jp/eng_site/index.html)

### Senior Division

Faculty of Law ..... <http://www.j.u-tokyo.ac.jp/en/course.html>

Faculty of Medicine ..... <http://www.m.u-tokyo.ac.jp/english/index.html>

Faculty of Engineering ..... <http://www.t.u-tokyo.ac.jp/etpage/index.html>

Faculty of Letters ..... <http://www.l.u-tokyo.ac.jp/eng/index.html>

Faculty of Science ..... <http://www.s.u-tokyo.ac.jp/en/>

Faculty of Agriculture ..... <http://www.a.u-tokyo.ac.jp/english/index.html>

Faculty of Economics ..... <http://www.e.u-tokyo.ac.jp/index-e.html>

College of Arts and Sciences ..... [http://www.c.u-tokyo.ac.jp/eng\\_site/index.html](http://www.c.u-tokyo.ac.jp/eng_site/index.html)

Faculty of Education ..... <http://www.p.u-tokyo.ac.jp/english>

Faculty of Pharmaceutical Sciences ..... <http://www.f.u-tokyo.ac.jp/en/>



# Undergraduate Education System

## The University of Tokyo's Undergraduate Education System - Late Specialization

A key feature of the undergraduate education at the University of Tokyo is that the first two years (referred to as the Junior Division) are devoted to the acquisition of fundamental skills necessary for further study. At the time of admission, students are assigned to one of six streams in either the Humanities and Social Sciences, or the Natural Sciences, where they study a broad spectrum of liberal arts subjects. From this Junior Division, they proceed to one of the departments in the ten Faculties of the Senior Division (the third and fourth years) in accordance with their preference, aptitude, and performance. This procedure is referred to as "Late Specialization".

The pathways between the Junior Division and the Senior Division are set so that students in each Junior Division stream generally proceed to Senior Division Faculties linked to that stream. However, since 2008, students have been given more flexible options to proceed to any Faculty regardless of their Junior Division assignment provided they fulfill certain requirements, though the quota for such students is limited. It should also be noted that depending on their performance, students may be assigned to a Faculty other than that of their preferred choice.

Note: International students admitted through Special Class-1 Screening proceed to the Senior Division faculty and department that they indicated in their university application form, provided that they fulfill the entry requirements for that faculty and department. Students who were admitted to the PEAK program will proceed on to the International Program on Japan in East Asia or the International Program on Environmental Science of the Senior Division of the College of Arts and Sciences whichever they indicated at the time of their examination, provided that they fulfill the necessary requirements.



Building 1 of the Komaba Campus is used for lectures. The clock tower has become the symbol of the campus.





# Graduate Schools

## Graduate Schools

Graduate School of Humanities and Sociology	.....	<a href="http://www.l.u-tokyo.ac.jp/eng/index.html">http://www.l.u-tokyo.ac.jp/eng/index.html</a>
Graduate School of Education	.....	<a href="http://www.p.u-tokyo.ac.jp/english">http://www.p.u-tokyo.ac.jp/english</a>
Graduate Schools for Law and Politics	.....	<a href="http://www.j.u-tokyo.ac.jp/en/course.html">http://www.j.u-tokyo.ac.jp/en/course.html</a>
Graduate School of Economics	.....	<a href="http://www.e.u-tokyo.ac.jp/index-e.html">http://www.e.u-tokyo.ac.jp/index-e.html</a>
Graduate School of Arts and Sciences	.....	<a href="http://www.c.u-tokyo.ac.jp/eng_site/">http://www.c.u-tokyo.ac.jp/eng_site/</a>
Graduate School of Science	.....	<a href="http://www.s.u-tokyo.ac.jp/en/">http://www.s.u-tokyo.ac.jp/en/</a>
Graduate School of Engineering	.....	<a href="http://www.t.u-tokyo.ac.jp/etpage/index.html">http://www.t.u-tokyo.ac.jp/etpage/index.html</a>
Graduate School of Agricultural and Life Sciences	.....	<a href="http://www.a.u-tokyo.ac.jp/english/index.html">http://www.a.u-tokyo.ac.jp/english/index.html</a>
Graduate School of Medicine	.....	<a href="http://www.m.u-tokyo.ac.jp/english/index.html">http://www.m.u-tokyo.ac.jp/english/index.html</a>
Graduate School of Pharmaceutical Sciences	.....	<a href="http://www.f.u-tokyo.ac.jp/en/">http://www.f.u-tokyo.ac.jp/en/</a>
Graduate School of Mathematical Sciences	.....	<a href="http://www.ms.u-tokyo.ac.jp/index.html">http://www.ms.u-tokyo.ac.jp/index.html</a>
Graduate School of Frontier Sciences	.....	<a href="http://www.k.u-tokyo.ac.jp/index.html.en">http://www.k.u-tokyo.ac.jp/index.html.en</a>
Graduate School of Information Science and Technology	.....	<a href="http://www.i.u-tokyo.ac.jp/index_e.shtml">http://www.i.u-tokyo.ac.jp/index_e.shtml</a>
Graduate School of Interdisciplinary Information Studies	.....	<a href="http://www.iii.u-tokyo.ac.jp/en/">http://www.iii.u-tokyo.ac.jp/en/</a>
Graduate School of Public Policy	.....	<a href="http://www.pp.u-tokyo.ac.jp/en/index.htm">http://www.pp.u-tokyo.ac.jp/en/index.htm</a>





# Affiliated Institutes

## Affiliated Institutes

The Institutes of Medical Science .....	<a href="http://www.ims.u-tokyo.ac.jp/imsut/en/">http://www.ims.u-tokyo.ac.jp/imsut/en/</a>
Earthquake Research Institute .....	<a href="http://www.eri.u-tokyo.ac.jp/eng/">http://www.eri.u-tokyo.ac.jp/eng/</a>
Institute for Advanced Studies on Asia .....	<a href="http://www.ioc.u-tokyo.ac.jp/eng/">http://www.ioc.u-tokyo.ac.jp/eng/</a>
Institute of Social Science .....	<a href="http://www.iss.u-tokyo.ac.jp/">http://www.iss.u-tokyo.ac.jp/</a>
Institute of Industrial Science .....	<a href="http://www.iis.u-tokyo.ac.jp/index_e.html">http://www.iis.u-tokyo.ac.jp/index_e.html</a>
Historiographical Institute .....	<a href="http://www.hi.u-tokyo.ac.jp/index.html">http://www.hi.u-tokyo.ac.jp/index.html</a>
Institute of Molecular and Cellular Biosciences .....	<a href="http://www.iam.u-tokyo.ac.jp/index.html">http://www.iam.u-tokyo.ac.jp/index.html</a>
Institute for Cosmic Ray Research .....	<a href="http://www.icrr.u-tokyo.ac.jp/index_eng.html">http://www.icrr.u-tokyo.ac.jp/index_eng.html</a>
The Institute for Solid State Physics .....	<a href="http://www.issp.u-tokyo.ac.jp/index_en.html">http://www.issp.u-tokyo.ac.jp/index_en.html</a>
Atmosphere and Ocean Research Institute .....	<a href="http://www.aori.u-tokyo.ac.jp/english">http://www.aori.u-tokyo.ac.jp/english</a>
Research Center for Advanced Science and Technology .....	<a href="http://www.rcast.u-tokyo.ac.jp/index_en.html">http://www.rcast.u-tokyo.ac.jp/index_en.html</a>





# Other Facilities

## Hospital

- The University of Tokyo Hospital ..... <http://www.h.u-tokyo.ac.jp/english/>
- IMSUT Hospital, The Institute of Medical Science ..... <http://www.h.ims.u-tokyo.ac.jp/english/index.html>

## University-wide Centers

- University Museum ..... [http://www.um.u-tokyo.ac.jp/index\\_en.html](http://www.um.u-tokyo.ac.jp/index_en.html)
- Cryogenic Research Center ..... [http://www.crc.u-tokyo.ac.jp/index\\_e.htm](http://www.crc.u-tokyo.ac.jp/index_e.htm)
- Radioisotope Center ..... <http://www.ric.u-tokyo.ac.jp/>
- Environmental Science Center ..... <http://www.esc.u-tokyo.ac.jp/english/index-e.html>
- Research into Artifacts, Center for Engineering ..... [http://www.race.u-tokyo.ac.jp/index\\_e.html](http://www.race.u-tokyo.ac.jp/index_e.html)
- Biotechnology Research Center ..... <http://park.itc.u-tokyo.ac.jp/biotec-res-ctr/>
- Asian Natural Environmental Science Center ..... [http://www.anesc.u-tokyo.ac.jp/index\\_en.html](http://www.anesc.u-tokyo.ac.jp/index_en.html)
- Center for Research and Development of Higher Education ..... <http://www.he.u-tokyo.ac.jp/en/>
- Center for Spatial Information Science ..... <http://www.csis.u-tokyo.ac.jp/english/>
- Information Technology Center ..... <http://www.itc.u-tokyo.ac.jp/index-e.html>
- International Center for Elementary Particle Physics ..... <http://www.icepp.s.u-tokyo.ac.jp/index-e.html>
- VLSI Design and Education Center ..... <http://www.vdec.u-tokyo.ac.jp/English/index.html>
- Policy Alternatives Research Institute (PARI) ..... <http://pari.u-tokyo.ac.jp/eng/index.html>

**The University of Tokyo Institutes for Advanced Study (UTIAS)** ... <http://www.utias.u-tokyo.ac.jp/>

Kavli Institute for the Physics and Mathematics of the Universe ..... <http://www.ipmu.jp/>

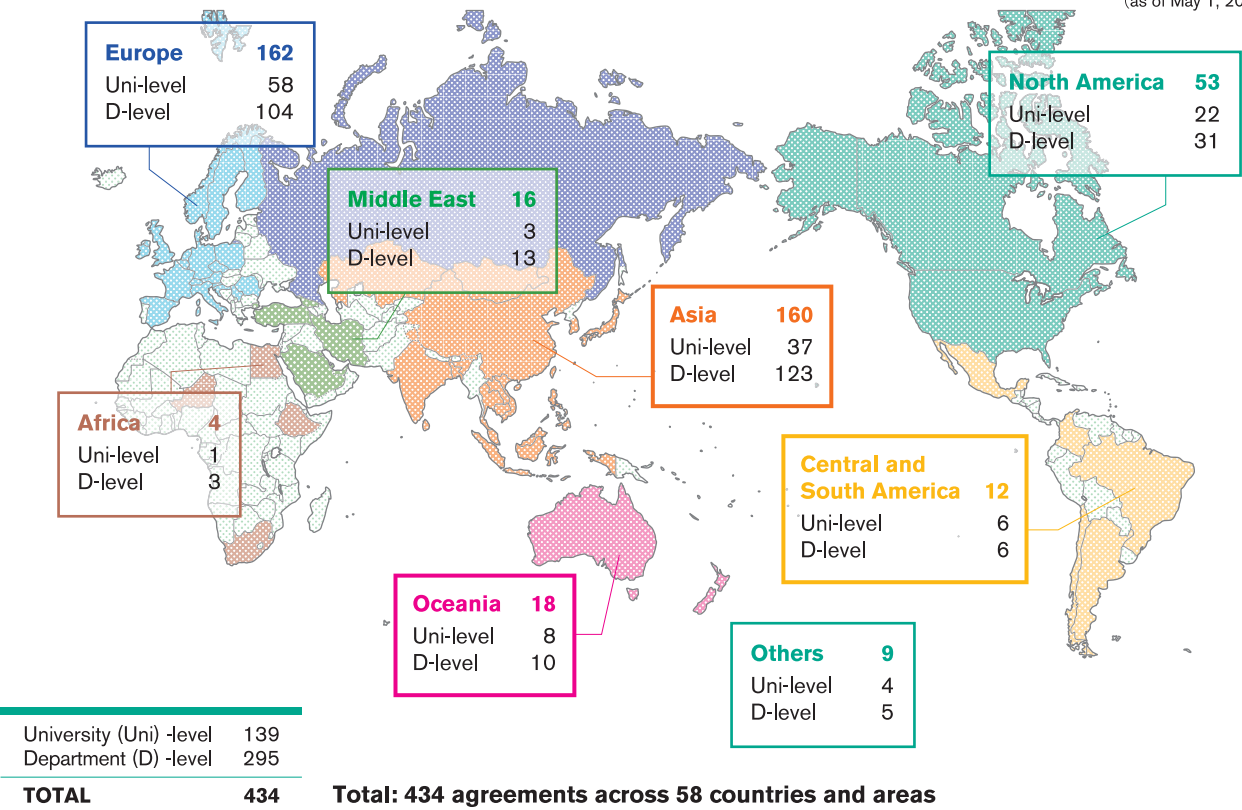
Integrated Research System for Sustainability Science (IR3S) ..... <http://en.ir3s.u-tokyo.ac.jp/>

**Libraries** ..... <http://www.lib.u-tokyo.ac.jp/index-e.html>



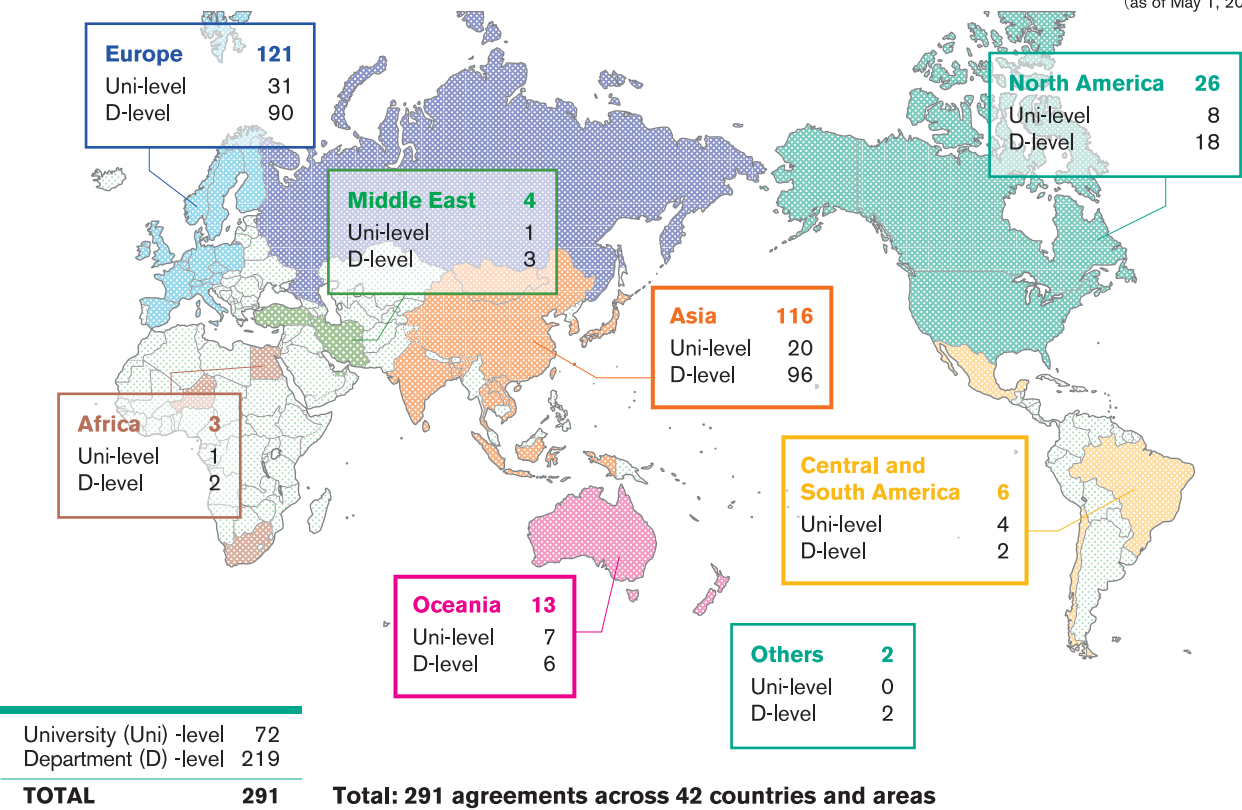
# International Exchange Agreements

(as of May 1, 2015)



# Student Exchange Memorandums

(as of May 1, 2015)





# Three Core Campuses

The University of Tokyo is built around the core campuses of Hongo, Komaba, and Kashiwa in the Greater Tokyo Area.

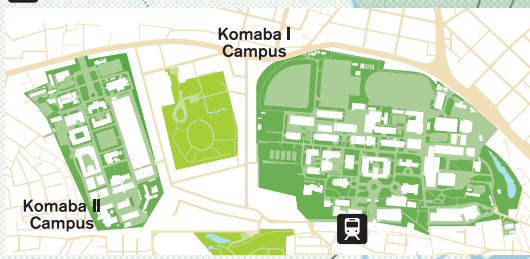
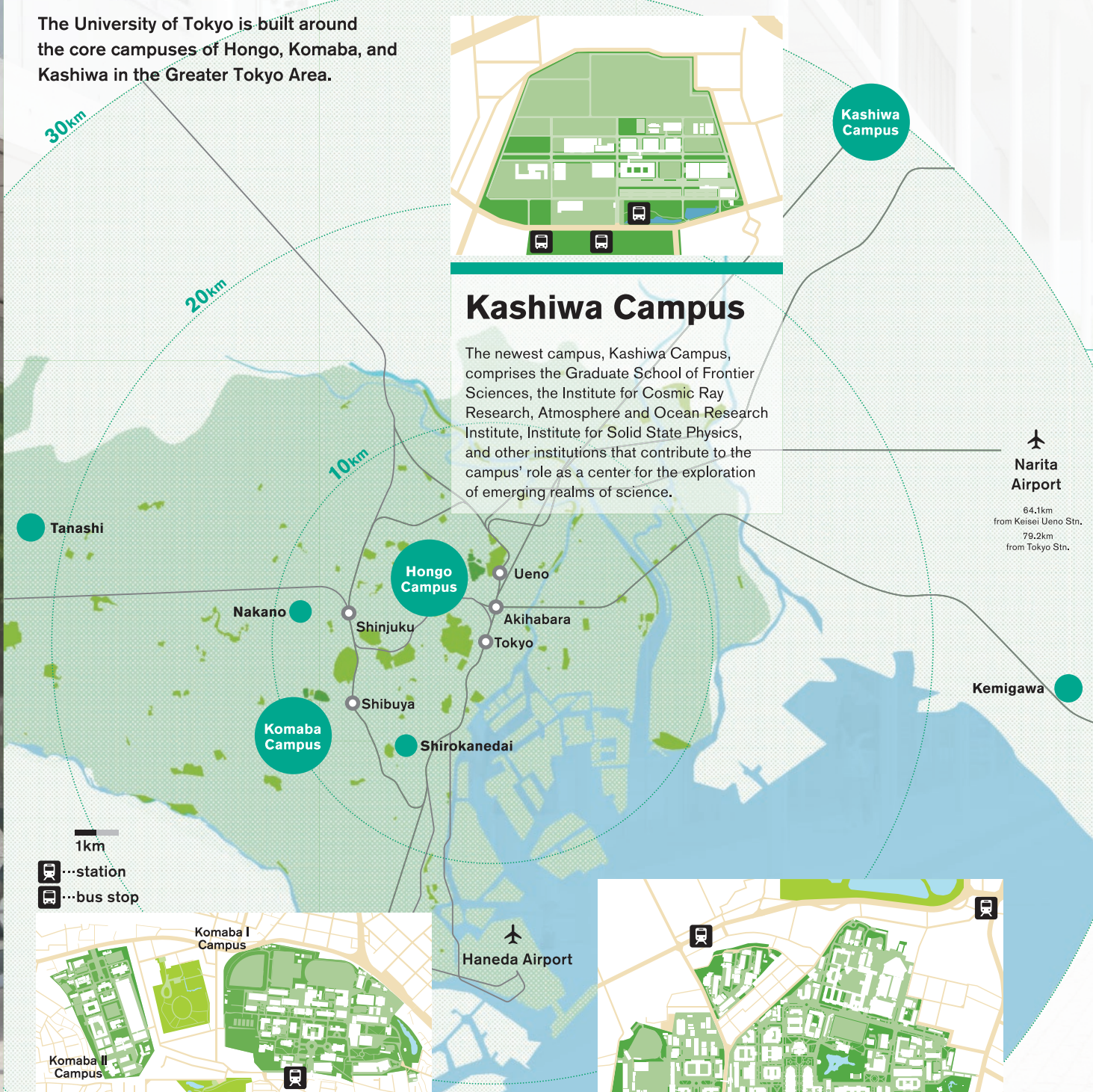


**Kashiwa Campus**

## Kashiwa Campus

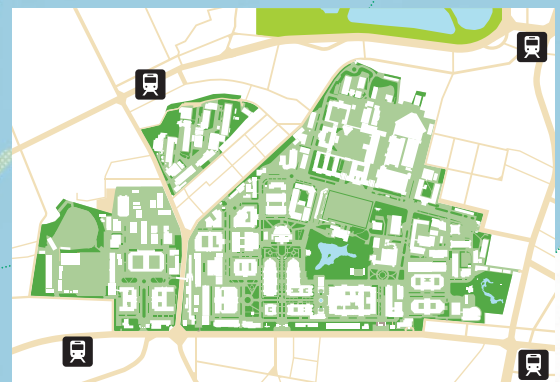
The newest campus, Kashiwa Campus, comprises the Graduate School of Frontier Sciences, the Institute for Cosmic Ray Research, Atmosphere and Ocean Research Institute, Institute for Solid State Physics, and other institutions that contribute to the campus' role as a center for the exploration of emerging realms of science.

**Narita Airport**  
64.1km from Keisei Ueno Stn.  
79.2km from Tokyo Stn.



## Komaba Campus

Komaba I Campus is centered on liberal arts education and interdisciplinary research, primarily at the lower undergraduate level. It is also the home of the Graduate School of Arts and Sciences and the Graduate School of Mathematical Sciences. Komaba II Campus, a research-focused extension, includes such facilities as the Institute of Industrial Science and the Research Center for Advanced Science and Technology.



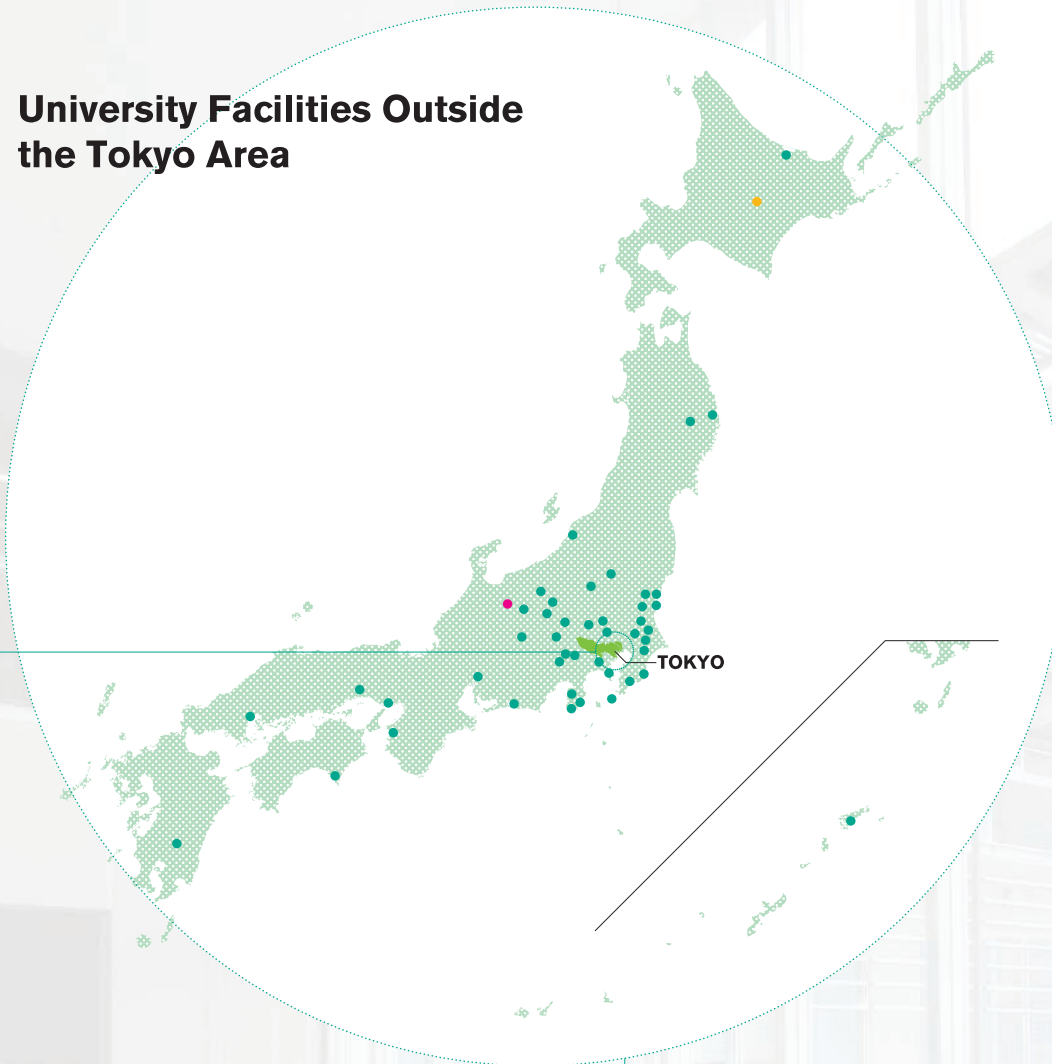
## Hongo Campus

The cornerstone of three core campuses of the University of Tokyo, Hongo Campus, was founded for the pursuit of traditional forms of education and research, spanning the upper undergraduate and graduate levels.

**Haneda Airport**



## University Facilities Outside the Tokyo Area



The University of Tokyo Hokkaido Forest near Furano, Hokkaido. (map ●)



Looking into the Super-Kamiokande Detector nearly full of water. (map ●)



mini-TAO 1m telescope located 5600m high on summit of Co. Chajnantor in Atacama, Chile (map ●)

### The University of Tokyo SNU Office

Location  
Room 503, Bld.153, Woojeongwong,  
Seoul National University  
Tel:+82-2-880-4448  
Fax:+82-2-883-4448  
Email:utatsnu@ml.adm.u-tokyo.ac.jp

## Worldwide Research Facilities and International Offices

The University of Tokyo has a large number of research facilities spread throughout Japan and in various countries worldwide to enhance educational and research activities of the University. The University also has three international offices whose purpose is to enhance the presence of the University overseas.



### The University of Tokyo India Office

Location  
Unit No.408 Prestige Meridian-1, No.29,  
M.G.Road, Bangalore, 560001 India  
Tel: +91-80-4150-8509  
Email: indiaoffice@ml.adm.u-tokyo.ac.jp

### 日本东京大学北京代表处 The University of Tokyo Beijing Office

Location  
1018, Resource Plaza,  
No.151 Zhong Guan Cun BeiDajie, Haidian  
District, Beijing, China Postcode: 100080  
Tel: +86-10-5887-6566,6567  
Fax: +86-10-5887-6568  
Email: office@beijing.u-tokyo.ac.jp





# University Data

## Undergraduate Enrollment

(as of May 1, 2015)

Division	Faculty	Regular Students		Research Students		Auditors		Total	
Junior	College of Arts and Sciences	6,641	126					6,641	126
Senior	Law	957	6			14		971	6
	Medicine	510	1	17		1	1	528	2
	Engineering	2,141	41	20	2	9		2,170	43
	Letters	788	14	6				794	14
	Science	657	14	2				659	14
	Agriculture	651	1	5	1			656	2
	Economics	749	18			2		751	18
	Arts and Sciences	463	26	6	3			469	29
	Education	215	2	5				220	2
	Pharmaceutical Sciences	188	4	1		2		191	4
<b>Total</b>		<b>13,960</b>	<b>253</b>	<b>62</b>	<b>6</b>	<b>28</b>	<b>1</b>	<b>14,050</b>	<b>260</b>

Note: Figures in red indicate the number of international students.  
Special Auditing Students and credited auditors are not included.

## Graduate Enrollment

(as of May 1, 2015)

Graduate School	Regular Students						Research Students etc.		Total	
	Master's		Professional		Doctoral					
Humanities and Sociology	314	36			413	71	40	37	767	144
Education	191	8			249	34	17	12	457	54
Law and Politics	40	24	535	1	84	29	10	10	669	64
Economics	229	86			106	7	4	2	339	95
Arts and Sciences	541	84			748	132	75	58	1,364	274
Science	713	41			637	45	23	16	1,373	102
Engineering	2,111	399	13		1,063	434	106	96	3,293	929
Agricultural and Life Sciences	595	60			420	126	40	26	1,055	212
Medicine	148	29	51	3	979	55	38	19	1,216	106
Pharmaceutical Sciences	195	16			181	16	10	7	386	39
Mathematical Sciences	99	10			101	8	2		202	18
Frontier Sciences	888	113			498	131	47	35	1,433	279
Information Science and Technology	463	42			180	46	36	23	679	111
Interdisciplinary Information Studies	195	42			168	49	22	21	385	112
Public Policy			269	96					269	96
<b>Total</b>	<b>6,722</b>	<b>990</b>	<b>868</b>	<b>100</b>	<b>5,827</b>	<b>1,183</b>	<b>470</b>	<b>362</b>	<b>13,887</b>	<b>2,635</b>

Note: Figures in red indicate the number of international students.  
Special Auditing Students and credited auditors are not included.





## Academic Staff

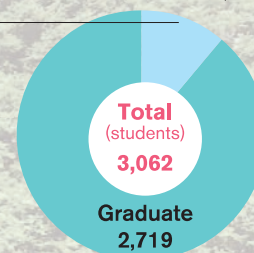
(as of May 1, 2015)

Professors	1,292
Associate Professors	894
Lecturers	277
Research Associates	1,383
Research Assistants	42
<b>Total</b>	<b>3,888</b>

## International Students

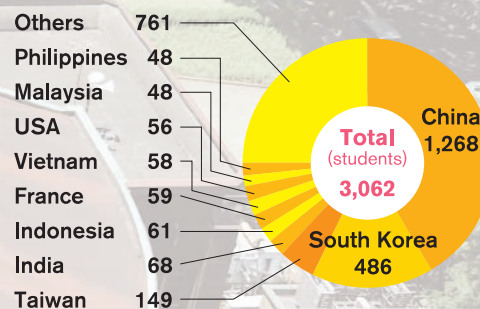
(as of May 1, 2015)

Undergraduates 343



## International Students Countries and Regions

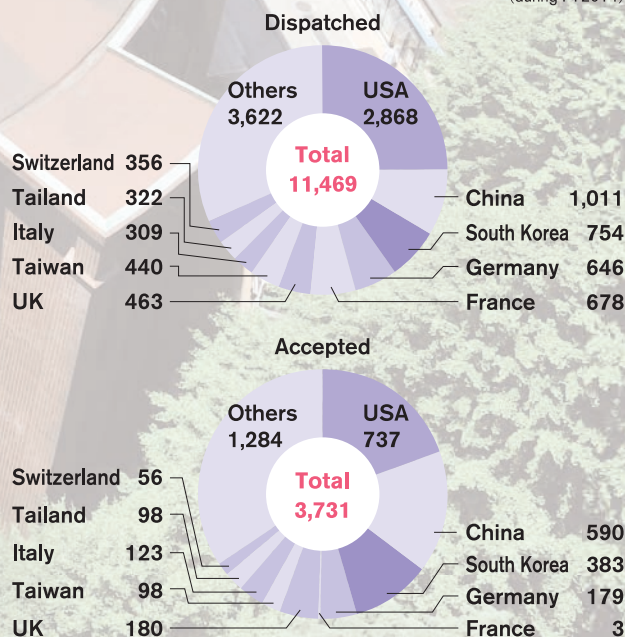
(as of May 1, 2015)



\*Special Auditing Students and credited auditors are included.

## Exchange of researchers

(during FY2014)







**Compiled by:**

**Division of International Affairs**

**Published by:**

**The University of Tokyo**

7-3-1 Hongo Bunkyo-ku Tokyo

113-8654 Japan

<http://www.u-tokyo.ac.jp>